

AIRPORT DIAGRAM

AL-5091 (FAA)

SOUTHERN ILLINOIS (MDH)
CARBONDALE-MURPHYSBORO, ILLINOIS

ATIS
119.725
SOUTHERN TOWER*
125.35 322.4
GND CON
121.8



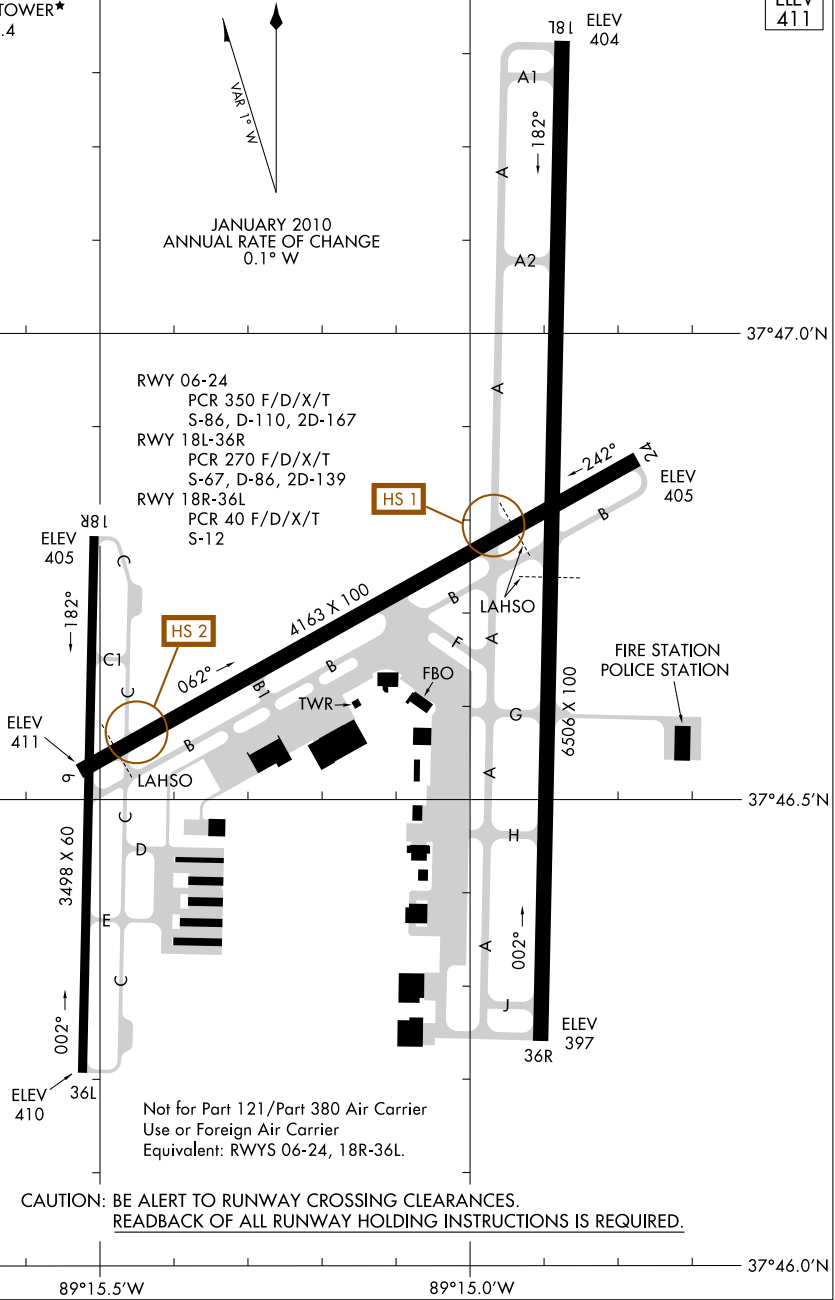
FIELD
ELEV
411

VAR 1° W
JANUARY 2010
ANNUAL RATE OF CHANGE
0.1° W

EC-3, 14 MAY 2026 to 11 JUN 2026

EC-3, 14 MAY 2026 to 11 JUN 2026

RWY 06-24
PCR 350 F/D/X/T
S-86, D-110, 2D-167
RWY 18L-36R
PCR 270 F/D/X/T
S-67, D-86, 2D-139
RWY 18R-36L
PCR 40 F/D/X/T
S-12



Not for Part 121/Part 380 Air Carrier
Use or Foreign Air Carrier
Equivalent: RWYS 06-24, 18R-36L.

CAUTION: BE ALERT TO RUNWAY CROSSING CLEARANCES.
READBCK OF ALL RUNWAY HOLDING INSTRUCTIONS IS REQUIRED.

AIRPORT DIAGRAM

CARBONDALE-MURPHYSBORO, ILLINOIS
SOUTHERN ILLINOIS (MDH)