

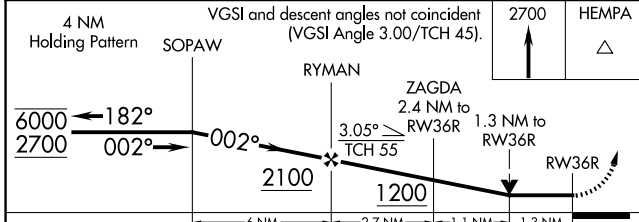
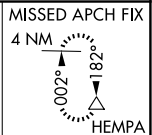
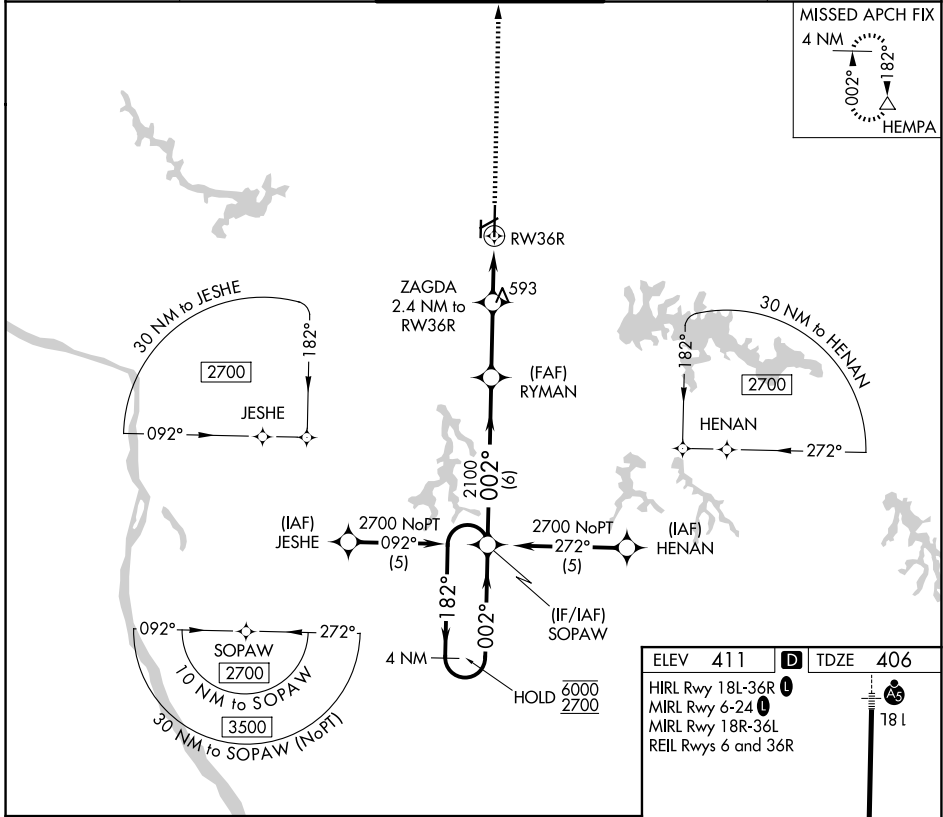
APP CRS	Rwy Ldg	<b>6506</b>
<b>002°</b>	TDZE	<b>406</b>
	Apt Elev	<b>411</b>

# RNAV (GPS) RWY 36R

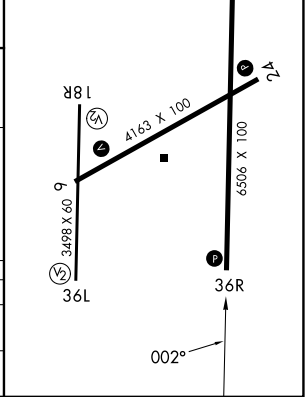
SOUTHERN ILLINOIS (MDH)

RNP APCH.		MISSED APPROACH: Climb to 2700 direct HEMPA and hold.		
<p>▼ Circling Rwy 6, 36L NA at night. ▲ Rwy 36R helicopter visibility reduction below 3/4 SM NA.</p>				

ATIS <b>119.725</b>	KANSAS CITY CENTER <b>127.475 346.275</b>	SOUTHERN TOWER ★ <b>125.35 (CTAF) 322.4</b>	GND CON <b>121.8</b>	UNICOM <b>122.95</b>
------------------------	----------------------------------------------	------------------------------------------------	-------------------------	-------------------------



ELEV 411	TDZE 406
HIRL Rwy 18L-36R	MIRL Rwy 6-24
MIRL Rwy 18R-36L	REIL Rws 6 and 36R



CATEGORY	A	B	C	D
LNVA MDA	860-1	454 (500-1)	860-1 3/8	454 (500-1 3/8)
CIRCLING	900-1 489 (500-1)	920-1 509 (600-1)	1180-2 1/4 769 (800-2 1/4)	1180-2 1/2 769 (800-2 1/2)

EC-3, 14 MAY 2026 to 11 JUN 2026

EC-3, 14 MAY 2026 to 11 JUN 2026