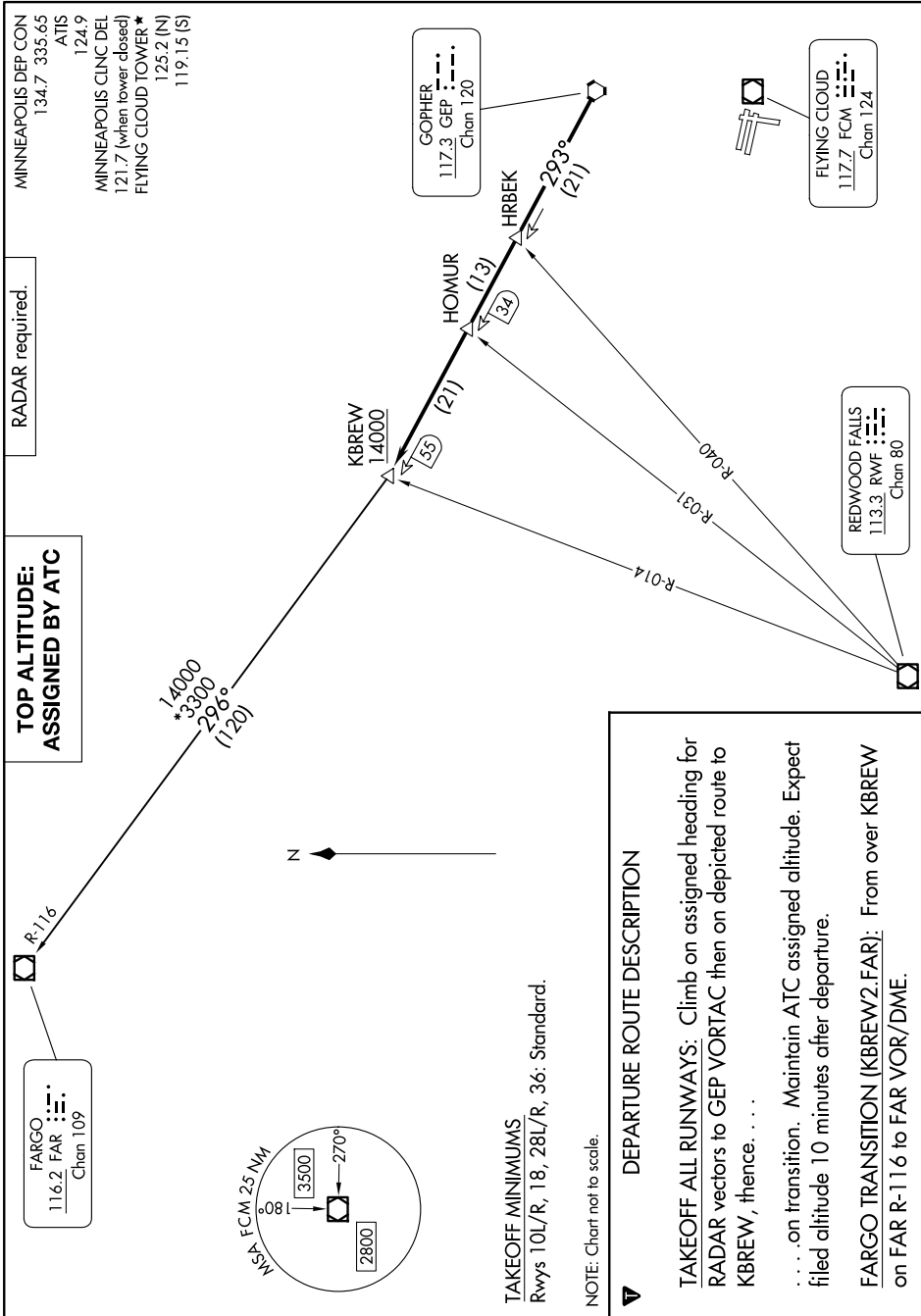


KBREW TWO DEPARTURE
(KBREW2.KBREW) 26134

AL-5094 (FAA)

FLYING CLOUD (FCM)
MINNEAPOLIS, MINNESOTA

NC-1, 14 MAY 2026 to 11 JUN 2026



KBREW TWO DEPARTURE
(KBREW2.KBREW) 16MAY24

MINNEAPOLIS, MINNESOTA
FLYING CLOUD (FCM)

NC-1, 14 MAY 2026 to 11 JUN 2026

RADAR required.

**TOP ALTITUDE:
ASSIGNED BY ATC**

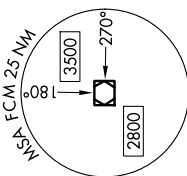
FARGO
116.2 FAR
Chan 109

MINNEAPOLIS DEP CON
134.7 335.65
ATIS
124.9
MINNEAPOLIS CLNC DEL
121.7 (when tower closed)
FLYING CLOUD TOWER ★
125.2 (N)
119.15 (S)

GOPHER
117.3 GEP
Chan 120

FLYING CLOUD
117.7 FCM
Chan 124

REDWOOD FALLS
113.3 RWF
Chan 80



TAKEOFF MINIMUMS
Rwys 10L/R, 18, 28L/R, 36: Standard.

NOTE: Chart not to scale.

DEPARTURE ROUTE DESCRIPTION

TAKEOFF ALL RUNWAYS: Climb on assigned heading for RADAR vectors to GEP VORTAC then on depicted route to KBREW, thence. . . .
 . . . on transition. Maintain ATC assigned altitude. Expect filed altitude 10 minutes after departure.
FARGO TRANSITION (KBREW2.FAR): From over KBREW on FAR R-116 to FAR VOR/DME.