

|  |                        |                             |   |
|--|------------------------|-----------------------------|---|
| WAAS<br>CH <b>90218</b><br><b>W28B</b> | APP CRS<br><b>278°</b> | Rwy Ldg<br>TDZE<br>Apt Elev | <b>5001</b><br><b>906</b><br><b>906</b> |
|--|------------------------|-----------------------------|---|

# RNAV (GPS) RWY 28L

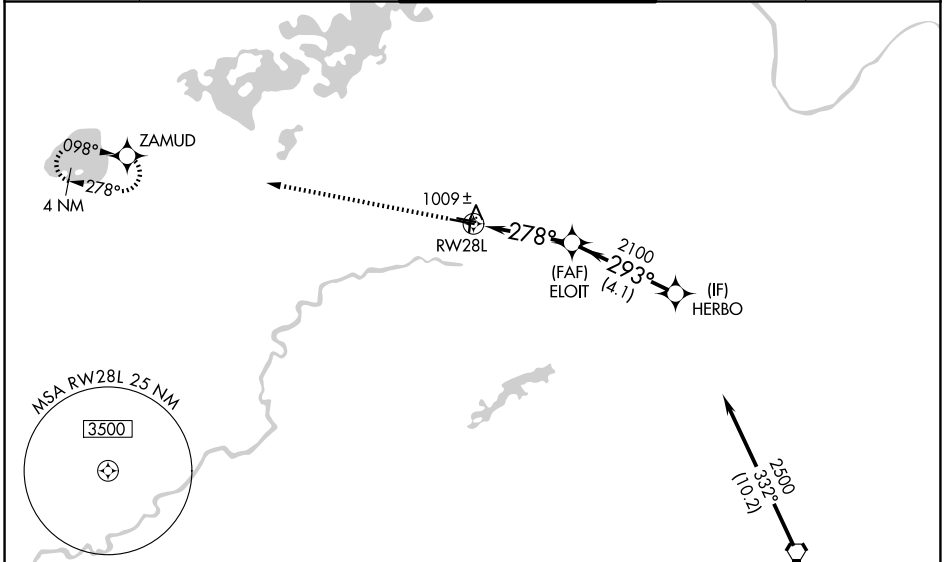
FLYING CLOUD (FCM)

RNP APCH.

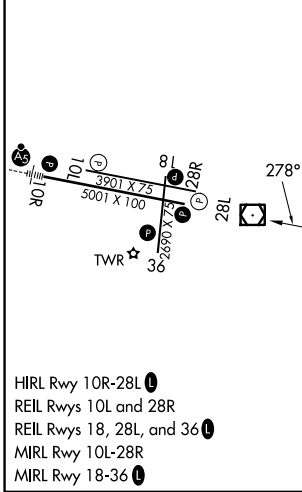
**⚠** For uncompensated Baro-VNAV systems, LNAV/VNAV NA below -16°C (2°F) or above 54°C (130°F). When local altimeter setting not received, use Minneapolis-St Paul Intl/Wald-Chamberlain altimeter setting and increase all DA 34 feet and all MDA 40 feet, increase LNAV Cats C and D visibility 1/8 mile. Helicopters visibility reduction below 3/4 SM NA. When Circling to Rwy 18, 36 at night, operational VGSI required, remain on or above VGSI glidepath until threshold.

MISSED APPROACH: Climb to 2700 direct ZAMUD and hold.

|                      |   |  |                         |                         |
|----------------------|---|--|-------------------------|-------------------------|
| ATIS<br><b>124.9</b> | MINNEAPOLIS APP CON<br><b>134.7 284.7</b> | <b>FLYING CLOUD TOWER*</b><br><b>125.2 (N)</b><br><b>119.15 (S) (CTAF) 0</b> | GND CON<br><b>121.7</b> | UNICOM<br><b>122.95</b> |
|----------------------|---|--|-------------------------|-------------------------|



|          |          |
|----------|----------|
| ELEV 906 | TDZE 906 |
|----------|----------|



- HIRL Rwy 10R-28L
- REIL Rws 10L and 28R
- REIL Rws 18, 28L, and 36
- MIRL Rwy 10L-28R
- MIRL Rwy 18-36

Procedure NA for arrivals on FGT VORTAC  
airway radials 258 CW 011.

|              |                       |   |                         |                       |
|--------------|-----------------------|---|-------------------------|-----------------------|
| 2700         | ZAMUD                 | VGSI and RNAV glidepath not coincident<br>(VGSI Angle 3.00/TCH 44). |                         | HERBO                 |
|              |                       | ELOIT   |                         | 2500                  |
|              |                       | 2100  | 293°                    |                       |
|              |                       | 2100  |                         |                       |
|              |                       | 3.6 NM  | 4.1 NM                  |                       |
| GP 3.00°     |                       |   |                         | TCH 55                |
| CATEGORY     | A                     | B   | C                       | D                     |
| LPV DA       |                       | 1156-1  | 250 (300-1)             |                       |
| LNAV/VNAV DA |                       | 1198-1  | 292 (300-1)             |                       |
| LNAV MDA     | 1280-1                | 374 (400-1)   | 1280-1½                 | 374 (400-1½)          |
| CIRCLING     | 1320-1<br>414 (500-1) | 1440-1<br>534 (600-1)   | 1440-1½<br>534 (600-1½) | 1540-2<br>634 (700-2) |

NC-1, 14 MAY 2026 to 11 JUN 2026

NC-1, 14 MAY 2026 to 11 JUN 2026