

NC-1, 14 MAY 2026 to 11 JUN 2026

**DEPARTURE ROUTE DESCRIPTION**

**TAKEOFF ALL RUNWAYS:** Fly assigned heading and altitude for RADAR vectors to MSP VOR/DME then on MSP R-138 to cross JEDET INT./MSP 34 DME, at or above 4000; then on ODI R-301 to ZMBRO INT./ODI 50 DME, thence . . . .

. . . .on assigned transition or route. Expect clearance to filed altitude/flight level 10 (ten) minutes after departure.

**NODINE TRANSITION [ZMBRO7.ODI]:** From over ZMBRO on ODI R-301 to ODI VORTAC.

**TOP ALTITUDE:  
(JETS) 7000/  
(PROPS) 5000**

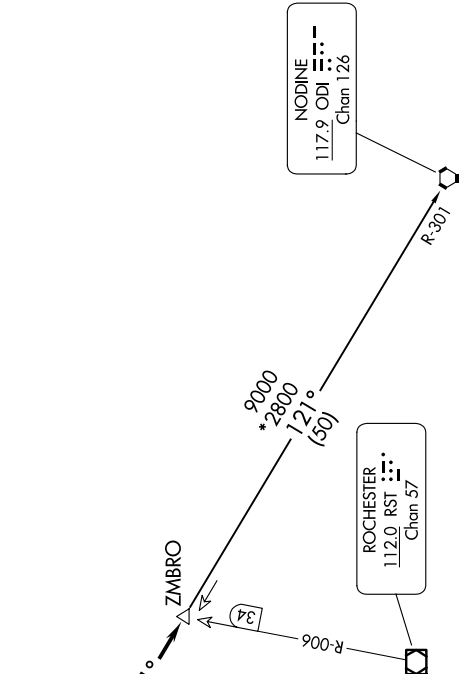
MINNEAPOLIS DEP CON  
134.7 284.7  
ATIS  
124.9  
MINNEAPOLIS CLNC DEL  
121.7 (when lower closed)  
FLYING CLOUD TOWER★  
125.2 (N)  
119.15 (S)

MINNEAPOLIS  
115.3 MSP  
Chan 100



**TAKEOFF MINIMUMS**  
Rwys 10L/R, 18, 28L/R, 36: Standard.

HALFWAY  
111.2 FOW  
Chan 49



**NOTE: RADAR required.**  
NOTE: Chart not to scale.

NC-1, 14 MAY 2026 to 11 JUN 2026