

APP CRS	Rwy Idg	<b>4001</b>
<b>141°</b>	TDZE	<b>9</b>
	Apt Elev	<b>10</b>

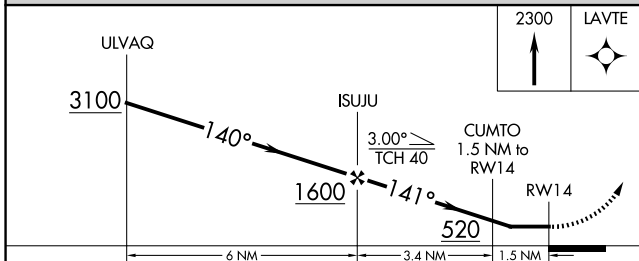
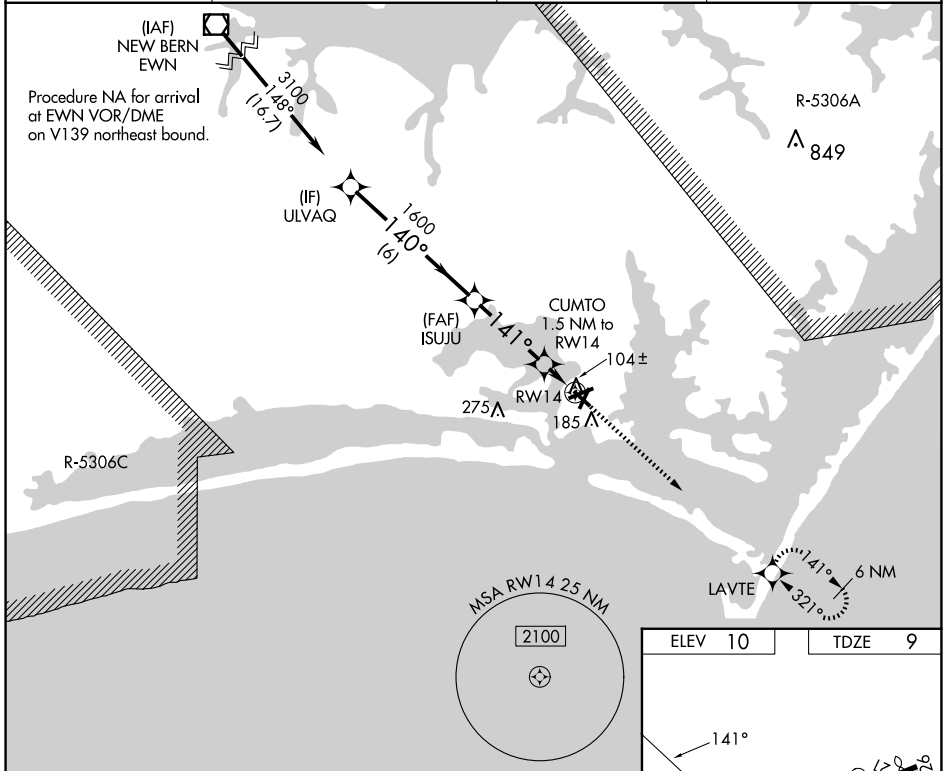
# RNAV (GPS) RWY 14

MICHAEL J SMITH FLD (MR.H)

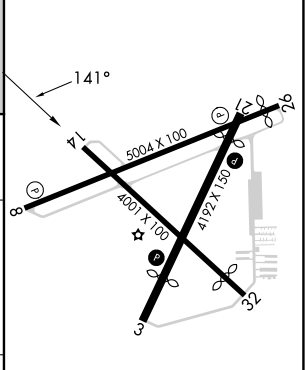
**⚠** DME/DME RNP-0.3 NA. ATC clearance required to penetrate R-5306A and R-5306C. When local altimeter setting not received, use Cherry Point MCAS (Cunningham Fld) altimeter setting and increase all MDA 40 feet; increase LNAV Cats C and D visibility 1/8 mile. Straight-in Rwy 14 NA at night, Circling Rwy 8, 14, 32 NA at night. Rwy 8, 14, 32 helicopter visibility reduction below 1 SM NA.

**MISSED APPROACH:**  
Climb to 2300 direct LAVTE and hold.

ASOS <b>135.375</b>	CHERRY POINT APP CON <b>132.575 299.6</b>	CLNC DEL <b>125.65</b>	UNICOM <b>122.8 (CTAF) 0</b>
------------------------	--	---------------------------	---------------------------------



ELEV	10	TDZE	9
------	----	------	---



CATEGORY	A	B	C	D
LNAV MDA	360-1		351 (400-1)	
CIRCLING	540-1	530 (600-1)	580-1½ 570 (600-1½)	580-2 570 (600-2)

REIL Rwys 8 and 26 **0**  
MIRL Rwys 3-21 and 8-26 **0**

SE-2, 14 MAY 2026 to 11 JUN 2026

SE-2, 14 MAY 2026 to 11 JUN 2026