

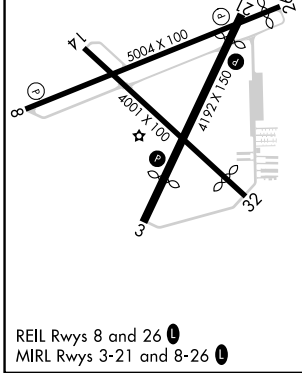
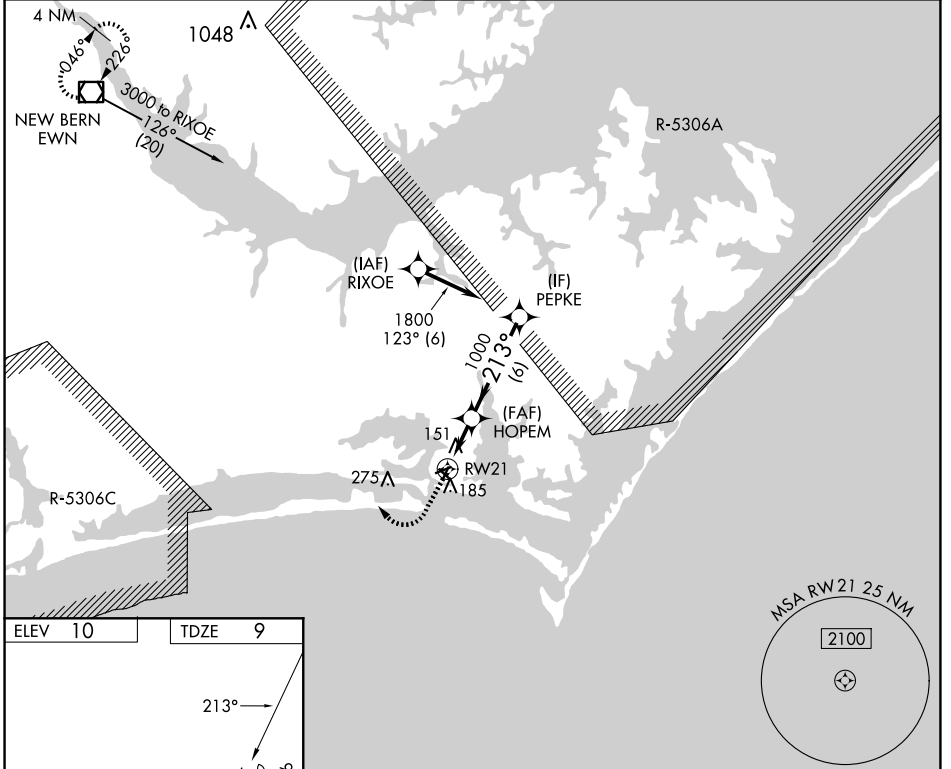
APP CRS	Rwy Idg	3676
213°	TDZE	9
	Apt Elev	10

RNAV (GPS) RWY 21

MICHAEL J SMITH FLD (MR.H)

RNP APCH - GPS.		MISSED APPROACH: Climb to 500 then climbing right turn to 3000 direct EWN VOR/DME and hold.
<p>▼ Circling Rwy 8, 14, 32 NA at night. Rwy 21 helicopter visibility reduction below 3/4 SM NA. ▲ ATC clearance required to penetrate R-5306A and R-5306C.</p>		

ASOS 135,375	CHERRY POINT APP CON 132,575 299.6	CLNC DEL 125,65	UNICOM 122.8 (CTAF) 0
------------------------	--	---------------------------	---------------------------------



500	3000	EWN	VGSI and descent angles not coincident (VGSI Angle 4.00/TCH 54).	
<p>↑</p>		<p>↪</p>	<p>◻</p>	
<p>0.8</p>		<p>2.2</p>	<p>6</p>	
CATEGORY	A	B	C	D
LNAV MDA	420-1	411 (500-1)		NA
CIRCLING	540-1	530 (600-1)		NA

SE-2, 14 MAY 2026 to 11 JUN 2026

SE-2, 14 MAY 2026 to 11 JUN 2026