

FORT POLK, LOUISIANA

RNAV (GPS) RWY 34

| | | |
|--|-------------------------|--|
| WAAS CH 88848 W34A | APCH CRS 338° | Rwy Idg TDZE Arprt Elev 4108 321 330 |
|--|-------------------------|--|

[USA]

MAKS AAF (FORT POLK) (KPOE)

RNP APCH - GPS

RADAR required for arrivals at CATVO.

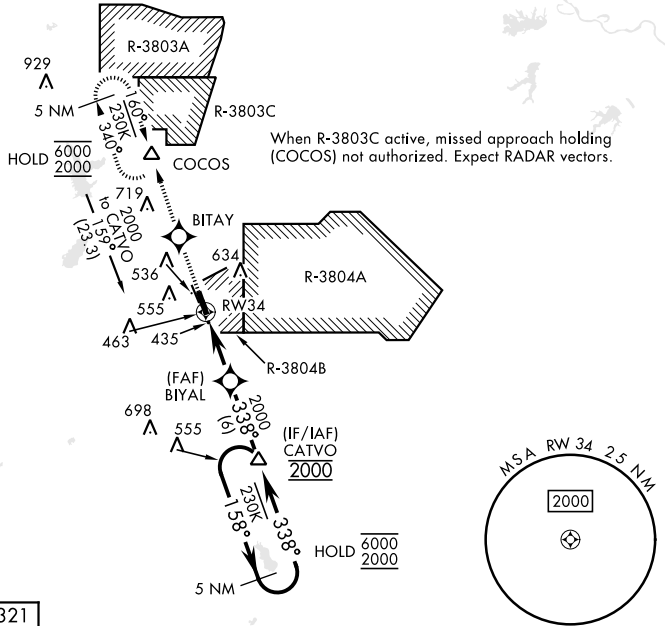
- ▼ * When ALS inop, increase vis to 1 mile.
- ** When ALS inop, increase vis to 7/8 mile.
- *** When ALS inop, increase CAT AB vis to 1 mile, CAT CD vis to 1 1/4 miles.
- When control tower is closed, increase vis to 1 mile.



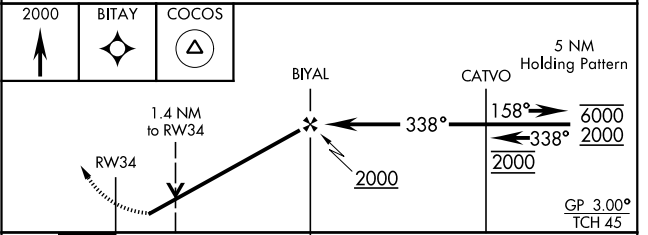
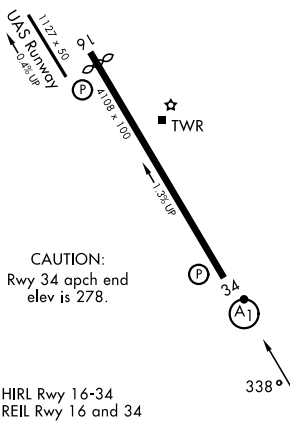
MISSED APPROACH: Climb to 2000 direct BITAY and on track 340° to COCOS and hold.

| | | | | |
|-----------------------------|-------------------------------|--|--------------------------------|---------|
| ATIS 134.85 282.2 | APP CON 123.7 261.3 | TOWER 41.5 119.0 (CTAF) 257.75 | GND CON 121.8 239.25 | ASR/PAR |
|-----------------------------|-------------------------------|--|--------------------------------|---------|

Rwy 34 helicopter visibility reduction below 3/4 mile not authorized.
 For uncompensated Baro-VNAV systems, LNAV/VNAV not authorized below -15°C or above 54°C.



| | |
|----------|----------|
| ELEV 330 | TDZE 321 |
|----------|----------|



| CATEGORY | A | B | C | D |
|----------------|--------------------------|------------------------------|--------------------------|--------------------------|
| LPV DA * | 668-3/4 | 347 | [400-3/4] | |
| LNAV/VNAV DA** | 594-3/4 273 (300-3/4) | 605-3/4 284 (300-3/4) | 613-3/4 292 (300-3/4) | 624-3/4 303 (300-3/4) |
| LNAV MDA*** | 760-3/4 | | 439 | (500-3/4) |
| CIRCLING | 880-1 550 (600-1) | 880-1 1/2 550 (600-1 1/2) | | 940-2 610 (700-2) |

FORT POLK, LOUISIANA
 Amdt 3 15MAY25

31° 03' N-93° 11' W

MAKS AAF (FORT POLK) (KPOE)

RNAV (GPS) RWY 34

SC-4, 14 MAY 2026 to 11 JUN 2026

SC-4, 14 MAY 2026 to 11 JUN 2026