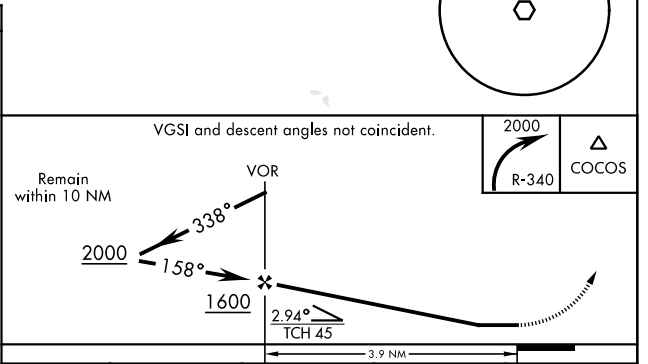
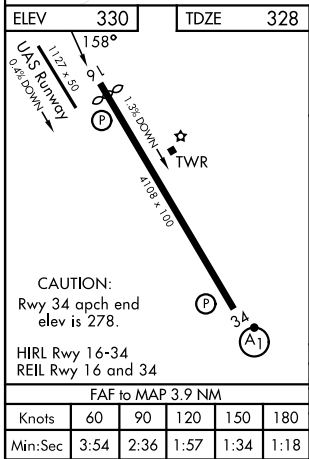
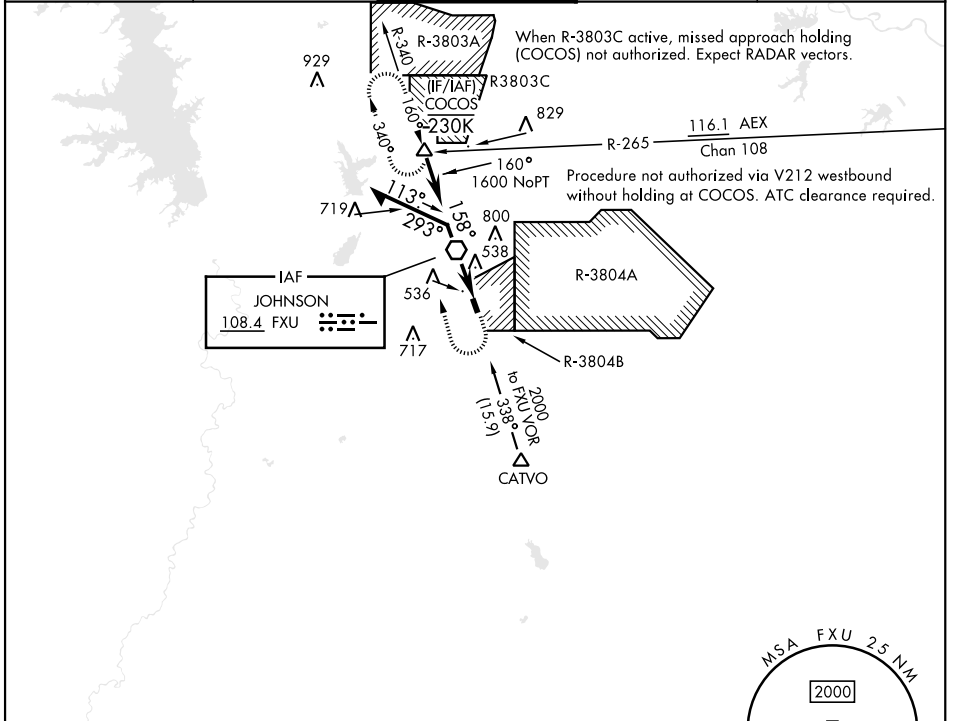


VOR RWY 16

VOR FXU 108.4	APCH CRS 158°	Rwy Ldg TDZE Arprt Elev 3914 328 330	[USA]	MAKS AAF (FORT POLK) (KPOE)
-------------------------	-------------------------	---	-------	-----------------------------

RADAR required for arrivals at CATVO. MISSED APPROACH: Climbing right turn to 2000 on FXU VOR R-340 to COCOS int and hold.

ATIS 134.85 282.2	APP CON 123.7 261.3	TOWER 41.5 119.0 (CTAF) 257.75	GND CON 121.8 239.25	ASR/PAR
-----------------------------	-------------------------------	--	--------------------------------	---------



CATEGORY	A	B	C	D
S-16	820-1 492	(500-1)	820-1 $\frac{3}{8}$ 492	(500-1 $\frac{3}{8}$)
CIRCLING	880-1 550	(600-1)	880-1 $\frac{1}{2}$ 550 (600-1 $\frac{1}{2}$)	940-2 610 (700-2)

VOR RWY 16

SC-4, 14 MAY 2026 to 11 JUN 2026

SC-4, 14 MAY 2026 to 11 JUN 2026