

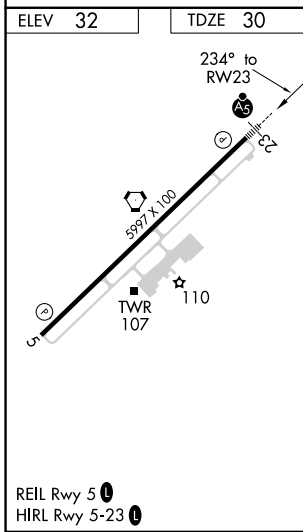
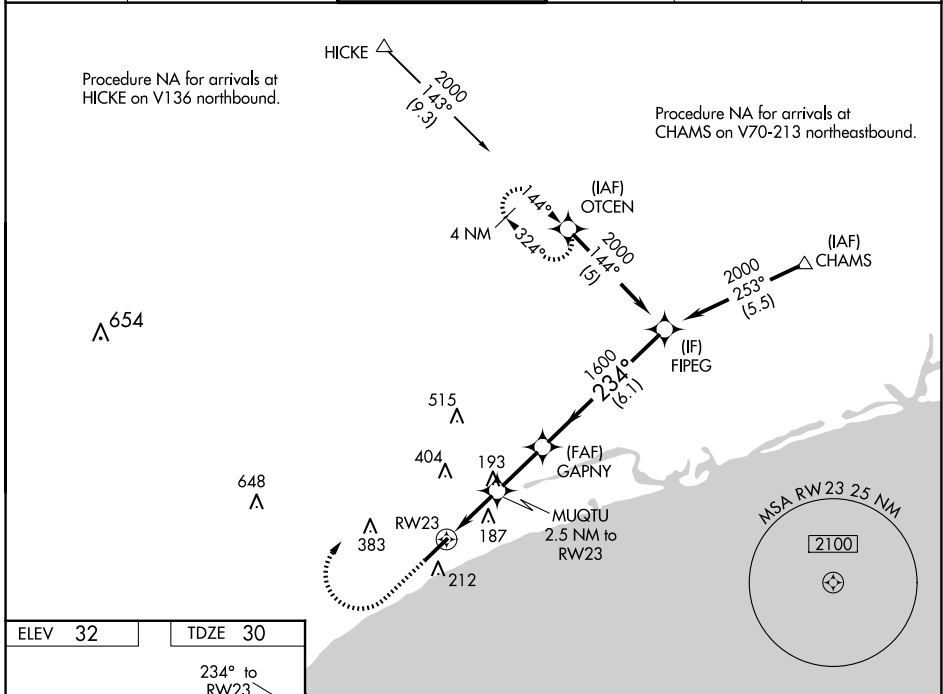
WAAS CH <b>42819</b> <b>W23A</b>	APP CRS <b>234°</b>	Rwy Idg TDZE Apt Elev	<b>5997</b> <b>30</b> <b>32</b>
--	------------------------	-----------------------------	---------------------------------------

# RNAV (GPS) RWY 23

GRAND STRAND (CRE)

RNP APCH-GPS.		MALSR	MISSED APPROACH: Climb to 1000 then climbing right turn to 2000 direct OTCEN and hold.
<p>▼ Rwy 23 helicopter visibility reduction below 3/4 SM NA. For uncompensated Baro-VNAV systems, LNAV/VNAV NA below -7°C or above 54°C. For inop ALS, increase LNAV/VNAV all Cats visibility to 1 1/8 SM; increase LNAV Cats A/B visibility to 1 SM.</p>			

ATIS <b>119.625</b>	MYRTLE BEACH APP CON* <b>119.2 350.3</b>	STRAND TOWER* <b>124.6 (CTAF) 0 257.6</b>	GND CON <b>121.8 257.6</b>	CLNC DEL <b>121.8</b>	UNICOM <b>122.95</b>
------------------------	---	--	-------------------------------	--------------------------	-------------------------



ELEV 32	TDZE 30				
1000	2000	OTCEN	FIPEG		
1.3 NM		1.2 NM		2.3 NM	
MUGTU 2.5 NM to RWY 23		1600		234°	
880		1600		2000	
1.3 NM		1.2 NM		6.1 NM	
CATEGORY	A	B	C	D	
LPV DA	230-1/2		200 (200-1/2)		
LNAV/VNAV DA	412-3/4		382 (400-3/4)		
LNAV MDA	480-3/4	450 (500-3/4)	480-7/8	450 (500-7/8)	
<input checked="" type="checkbox"/> CIRCLING	520-1	488 (500-1)	720-2	720-2 1/4	688 (700-2 1/4)
GP 3.00° TCH 55'					

SE-2, 14 MAY 2026 to 11 JUN 2026

SE-2, 14 MAY 2026 to 11 JUN 2026