

LOC/DME I-SGC 110.1 Chan 38	APP CRS 191°	Rwy Ldg 11500 TDZE 302 Apt Elev 312
---	------------------------	--

ILS RWY 19L (SA CAT II)

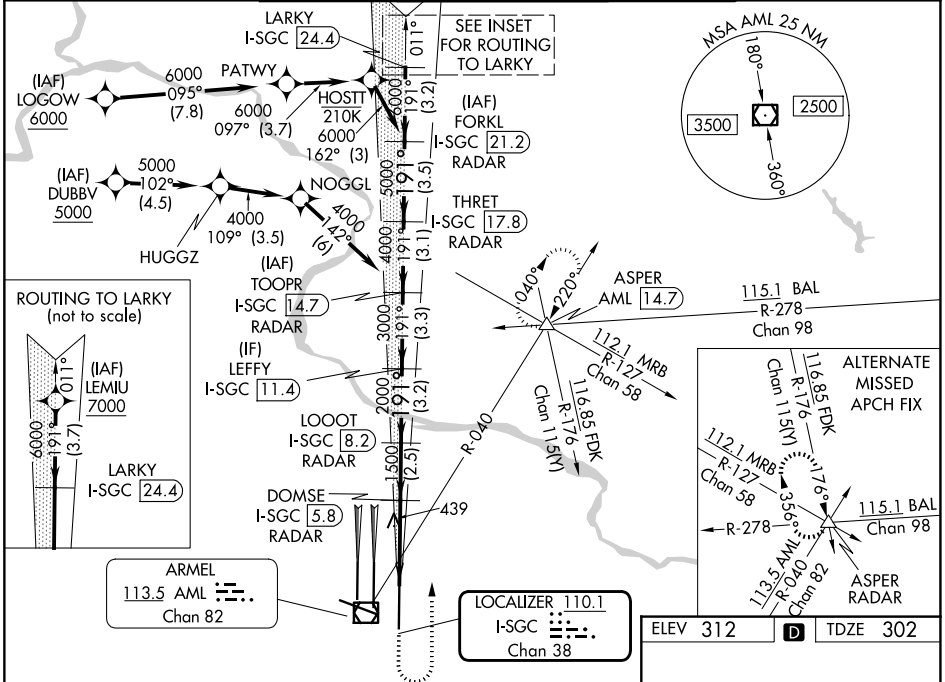
WASHINGTON DULLES INTL (IAD)

RNP APCH - GPS. From LOGOW, or DUBBV, or LEMIU.
 DME or RADAR required. RADAR required for procedure entry at LEMIU.
 Simultaneous approach authorized.
 Requires specific OPSPEC, MSPEC, or LOA approval.



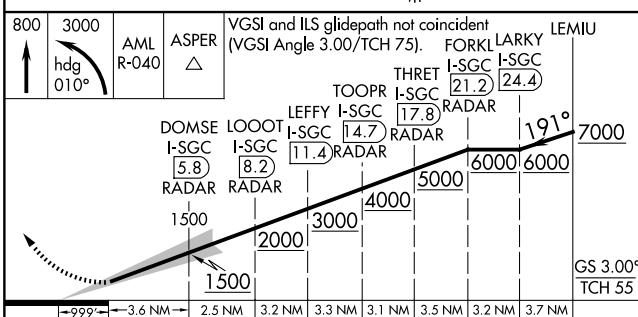
MISSED APPROACH: Climb to 800 then climbing left turn to 3000 on heading 010° and on AML VOR/DME R-040 to ASPER INT/AML 14.7 DME and hold.

D-ATIS 134.85	POTOMAC APP CON 120.45 306.925 (241°-330°) 128.525 306.925 (091°-240°) 126.1 338.25 (331°-090°)	DULLES TOWER 120.1 317.8 (Rwys 1R/19L) 120.25 348.6 (Rwy 1C/19C) 134.425 348.6 (Rwys 1L/19R and 12/30)	GND CON 121.9 317.8 (EAST) 121.625 348.6 (WEST)
-------------------------	---	--	---

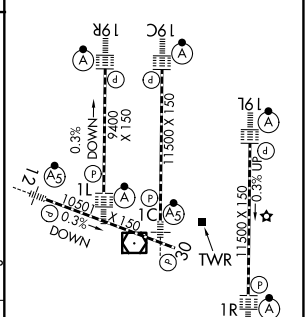


NE-3, 14 MAY 2026 to 11 JUN 2026

NE-3, 14 MAY 2026 to 11 JUN 2026



ELEV 312	TDZE 302
----------	----------



800	3000	AML R-040	ASPER	VGSi and ILS glidepath not coincident (VGSi Angle 3.00/TCH 75).	FORKL	LARKY	LEMIU
1500	2000	3000	4000	5000	6000	6000	7000
3.6 NM	2.5 NM	3.2 NM	3.3 NM	3.1 NM	3.5 NM	3.2 NM	3.7 NM

SA CATEGORY II ILS - SPECIAL AIRCREW & AIRCRAFT CERTIFICATION REQUIRED

TDZL/RCLS Rwys 1C, 1L, 1R, 12, 19C and 19R
 REIL Rwy 30
 HIRL all rwys