

LOC/DME I-HSU 110.75 Chan 44 (Y)	APP CRS 191°	Rwy Ldg TDZE Apt Elev	9400 278 312
--	------------------------	-----------------------------	---

ILS RWY 19R (CAT II & III)

WASHINGTON DULLES INTL (IAD)

RNP APCH-GPS. From DUBBY.

DME or RADAR required. RADAR required for procedure entry at RUBNZ.

ALSF-2



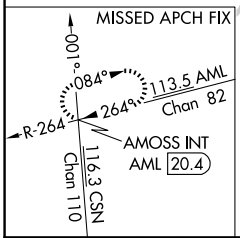
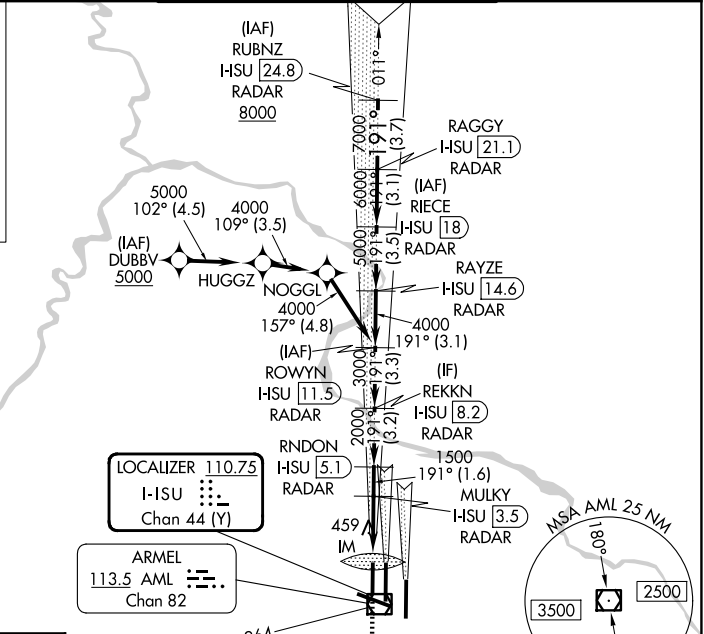
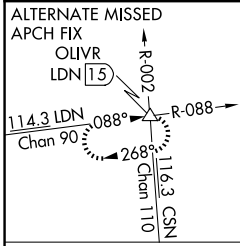
MISSED APPROACH: Climb to 800 then climbing right turn to 3000 on heading 280° and AML VOR/DME R-264 to AMOSS INT/AML 20.4 DME and hold.

Simultaneous approach authorized.

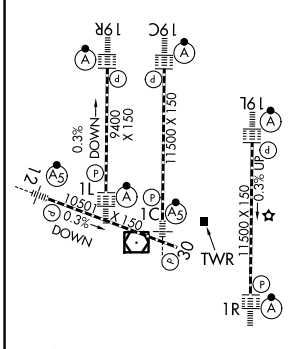
D-ATIS 134.85	POTOMAC APP CON 120.45 306.925 (241°-330°) 128.525 306.925 (091°-240°) 126.1 338.25 (331°-090°)
-------------------------	---

DULLES TOWER	
120.1 317.8 (Rwy 1R/19L)	
120.25 348.6 (Rwy 1C/19C)	
134.425 348.6 (Rwys 1L/19R and 12/30)	

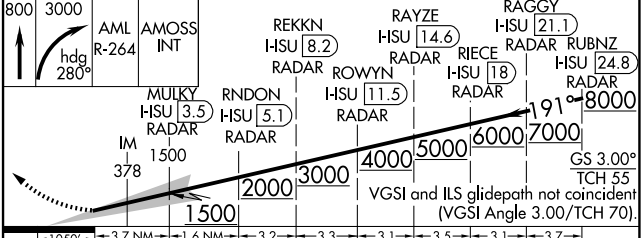
GND CON	
121.9 317.8 (EAST)	
121.625 348.6 (WEST)	



ELEV 312	D	TDZE 278
-----------------	----------	-----------------



TDZL/RCLS Rwys 1C, 1L, 1R, 12, 19C and 19R
REIL Rwy 30
HIRL all rwys



1050'	3.7 NM	1.6 NM	3.2	3.3	3.1	3.5	3.1	3.7
CATEGORY	A	B	C	D				
S-ILS 19R	CAT II RA 102/12 100 DA 378							
S-ILS 19R	CAT IIIa RVR 07							
S-ILS 19R	CAT IIIb RVR 06							
S-ILS 19R	CAT IIIc NA							

CATEGORY II & III ILS - SPECIAL AIRCREW & AIRCRAFT CERTIFICATION REQUIRED

NE-3, 14 MAY 2026 to 11 JUN 2026

NE-3, 14 MAY 2026 to 11 JUN 2026