

LOC/DME I-OIU <b>110.75</b> Chan <b>44</b> (Y)	APP CRS <b>011°</b>	Rwy Ldg <b>9400</b> TDZE <b>296</b> Apt Elev <b>312</b>
--	------------------------	--

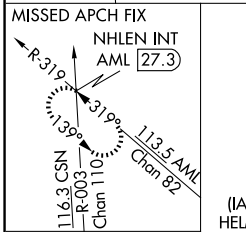
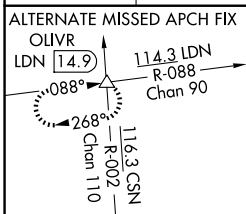
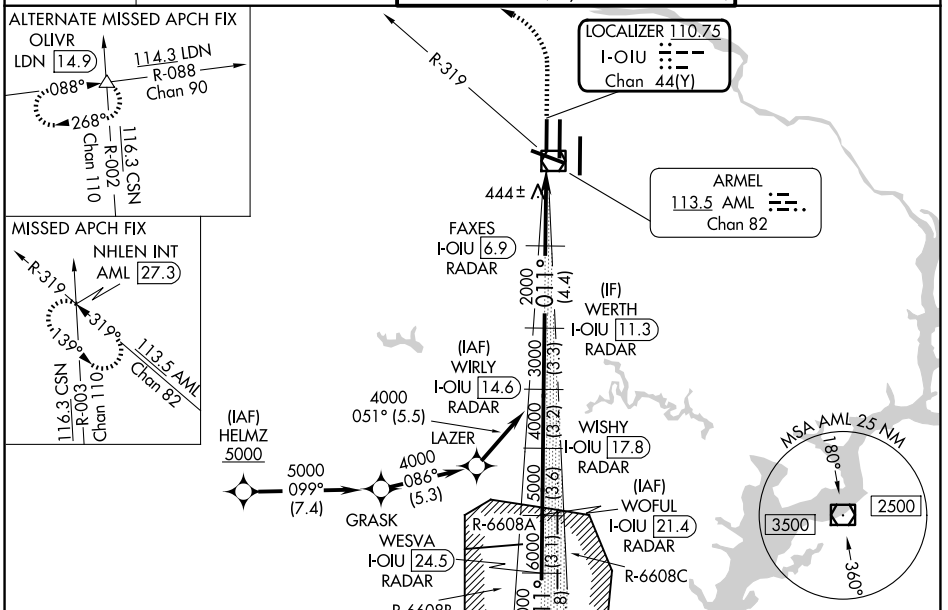
# ILS RWY 1L (CAT II & III)

## WASHINGTON DULLES INTL (IAD)

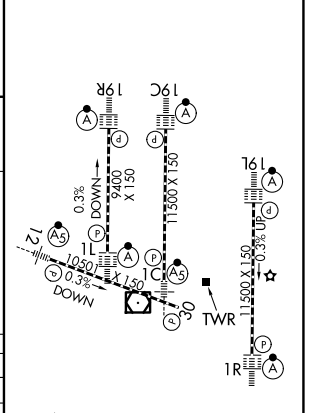
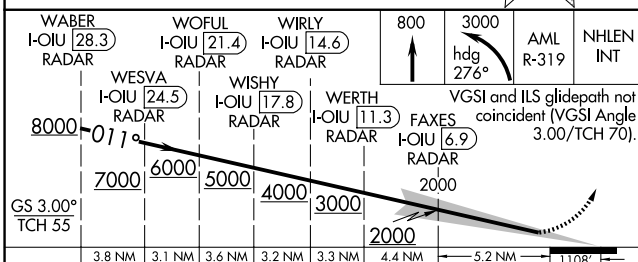
RNP APCH - GPS. From HELMZ.  
DME or RADAR required.  
RADAR required for procedure entry at WABER.  
Simultaneous approach authorized.

ALSIF-2  
MISSED APPROACH: Climb to 800 then climbing left turn to 3000 on heading 276° and on AML VOR/DME R-319 to NHLEN INT/AML 27.3 DME and hold.

D-ATIS <b>134.85</b>	POTOMAC APP CON <b>120.45 306.925</b> (241°-330°) <b>128.525 306.925</b> (091°-240°) <b>126.1 338.25</b> (331°-090°)	DULLES TOWER <b>120.1 317.8</b> (Rwys 1R/19L) <b>120.25 348.6</b> (Rwy 1C/19C) <b>134.425 348.6</b> (Rwys 1L/19R and 12/30)	GND CON <b>121.9 317.8</b> (EAST) <b>121.625 348.6</b> (WEST)
-------------------------	---	--	---



ELEV 312	TDZE 296
----------	----------



CATEGORY	A	B	C	D
S-ILS 1L	CAT II RA 97/12		100 DA 396	
S-ILS 1L	CAT III RVR 06			

### CATEGORY II & III ILS - SPECIAL AIRCREW & AIRCRAFT CERTIFICATION REQUIRED

TDZL/RCLS Rwys 1C, 1L, 1R, 12, 19C and 19R  
REIL Rwy 30  
HIRL all rwys

NE-3, 14 MAY 2026 to 11 JUN 2026

NE-3, 14 MAY 2026 to 11 JUN 2026