

LOC/DME I-HAD 110.1 Chan 38	APP CRS 011°	Rwy Ldg TDZE Apt Elev 11500 312 312
--	------------------------	---

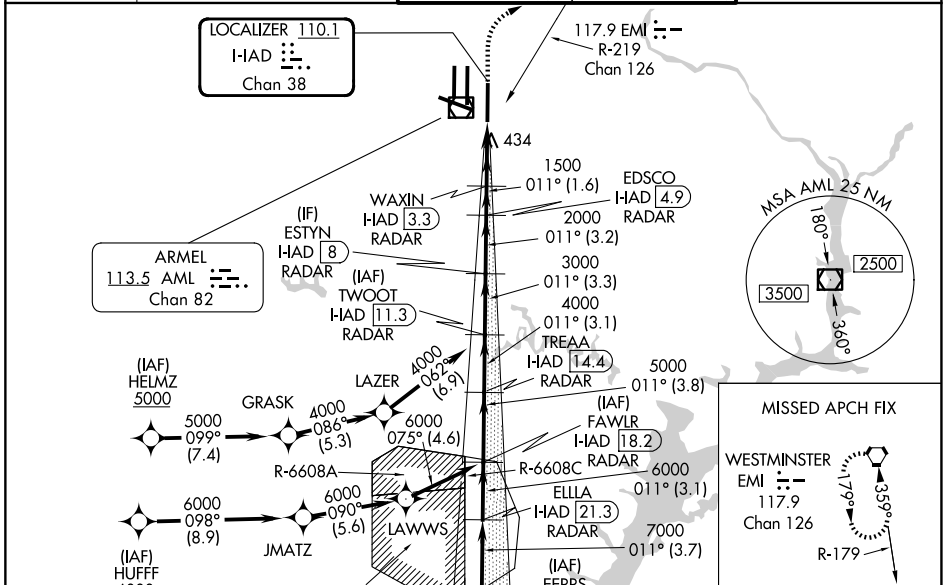
ILS RWY 1R (CAT II & III)

WASHINGTON DULLES INTL (IAD)

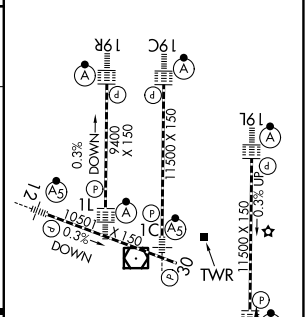
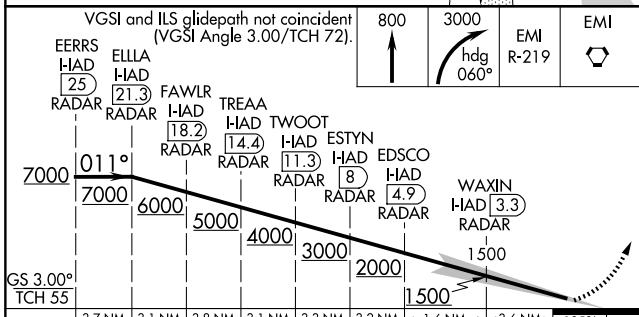
RNP APCH-GPS. From HELMZ, or HUFFF.
DME or RADAR required.
RADAR required for procedure entry at EERRS.
Simultaneous approach authorized.

ALSF-2
MISSED APPROACH: Climb to 800 then climbing right turn to 3000 on heading 060° and EMI VORTAC R-219 to EMI VORTAC and hold.

D-ATIS 134.85	POTOMAC APP CON 120.45 306.925 (241°-330°) 128.525 306.925 (091°-240°) 126.1 338.25 (331°-090°)	DULLES TOWER 120.1 317.8 (Rwy 1R/19L) 120.25 348.6 (Rwy 1C/19C) 134.425 348.6 (Rwys 1L/19R and 12/30)	GND CON 121.9 317.8 (EAST) 121.625 348.6 (WEST)
-------------------------	---	---	---



ELEV 312	TDZE 312
----------	----------



CATEGORY	A	B	C	D
S-ILS 1R	CAT II RA 94/12 100 DA 412			
S-ILS 1R	CAT III RVR 06			

TDZL/RCLS Rwys 1C, 1L, 1R, 12, 19C and 19R
REIL Rwy 30
HIRL all rwys

CATEGORY II & III ILS - SPECIAL AIRCREW & AIRCRAFT CERTIFICATION REQUIRED

NE-3, 14 MAY 2026 to 11 JUN 2026

NE-3, 14 MAY 2026 to 11 JUN 2026