

LOC/DME I-SGC 110.1 Chan 38	APP CRS 191°	Rwy Ldg 11500 TDZE 302 Apt Elev 312
---	------------------------	--

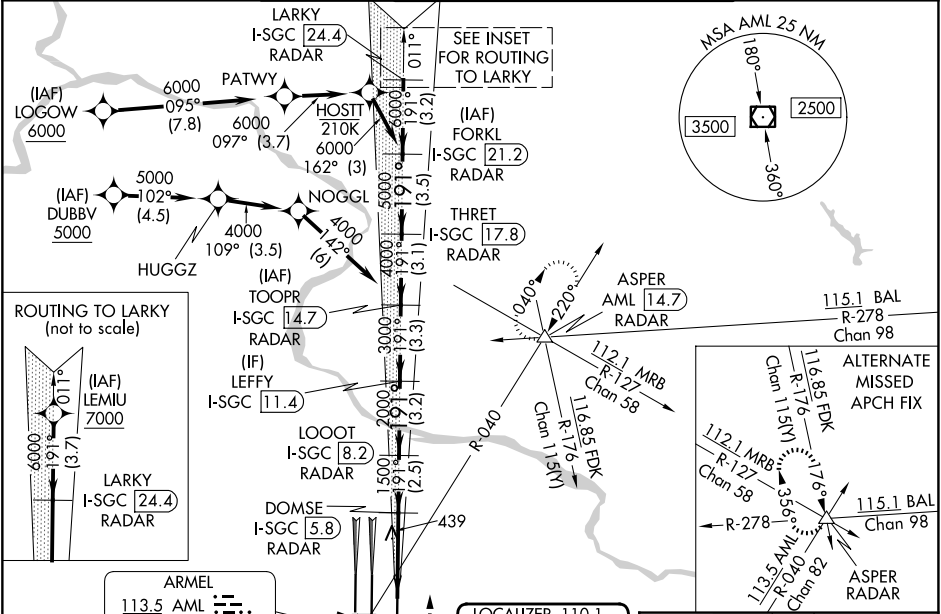
ILS or LOC RWY 19L

WASHINGTON DULLES INTL (IAD)

RNP APCH - GPS. From LOGOV, or DUBBV, or LEMIU.
DME or RADAR required. RADAR required for procedure entry at LEMIU.
Simultaneous approach authorized.
*RVr 1800 authorized with use of FD or AP or HUD to DA.

ALSF-2
MISSED APPROACH: Climb to 800 then climbing left turn to 3000 on heading 010° and on AML VOR/DME R-040 to ASPER INT/AML 14.7 DME and hold.

D-ATIS 134.85	POTOMAC APP CON 120.45 306.925 (241°-330°) 128.525 306.925 (091°-240°) 126.1 338.25 (331°-090°)	DULLES TOWER 120.1 317.8 (Rwy 1R/19L) 120.25 348.6 (Rwy 1C/19C) 134.425 348.6 (Rwys 1L/19R and 12/30)	GND CON 121.9 317.8 (EAST) 121.625 348.6 (WEST)
-------------------------	---	---	---

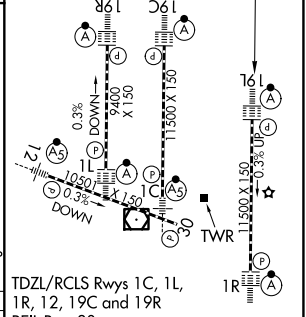
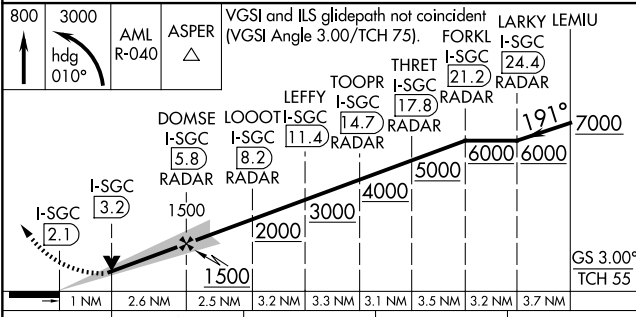


NE-3, 14 MAY 2026 to 11 JUN 2026

NE-3, 14 MAY 2026 to 11 JUN 2026

ARMEL 113.5 AML Chan 82	LOCALIZER 110.1 I-SGC Chan 38
-------------------------------	-------------------------------------

ELEV 312	TDZE 302
----------	----------



CATEGORY	A	B	C	D
S-ILS 19L *	502/24 200 (200-1/2)			
S-LOC 19L	700/24	398 (400-1/2)	700/35	398 (400-3/8)

TDZL/RCLS Rwys 1C, 1L, 1R, 12, 19C and 19R	REIL Rwy 30	HIRL all rwys			
FAF to MAP 3.6 NM					
Knots	60	90	120	150	180
Min:Sec	3:36	2:24	1:48	1:26	1:12