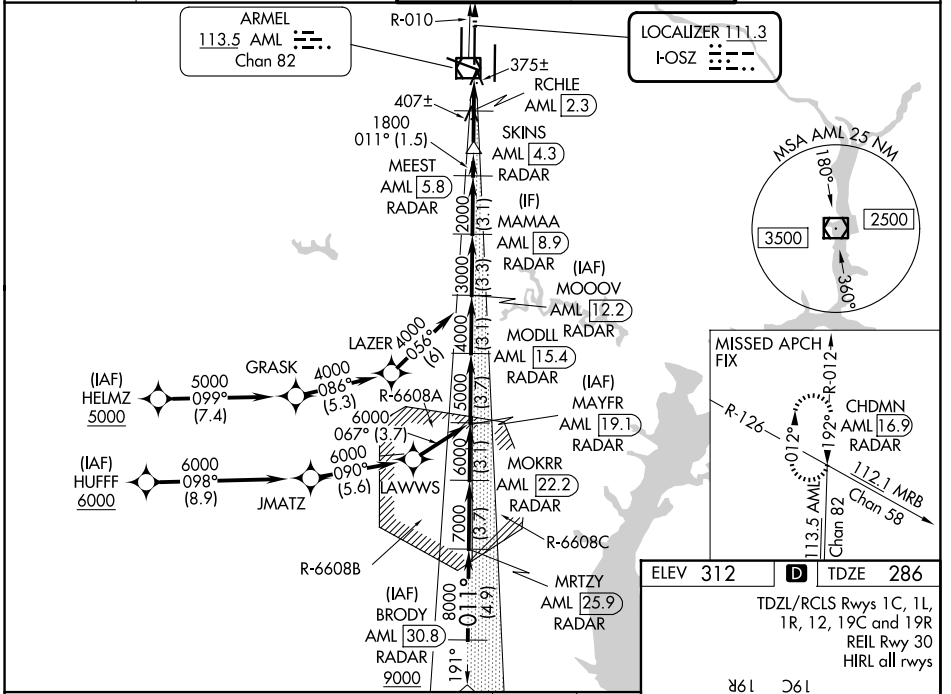


LOC I-OSZ 111.3	APP CRS 011°	Rwy Ldg 11500
		TDZE 286
		Apt Elev 312

ILS or LOC RWY 1C

WASHINGTON DULLES INTL (IAD)

RNP APCH-GPS. From HELMZ or HUFFF.		MALSR	MISSED APPROACH: Climb to 4000 on AML VOR/DME R-010 to CHDMN/AML 16.9 DME/RADAR and hold, continue climb-in-hold to 4000.
DME or RADAR required. RADAR required for procedure entry at BRODY.			
<p>Simultaneous approach authorized. DME from AML VOR/DME. DME use requires simultaneous reception of I-OSZ and AML DME. For inop ALS, increase S-LOC Cats C/D visibility to RVR 5500.</p>			
D-ATIS 134.85	POTOMAC APP CON 120.45 306.925 (241°-330°) 128.525 306.925 (091°-240°) 126.1 338.25 (331°-090°)	DULLES TOWER 120.1 317.8 (Rwy 1R/19L) 120.25 348.6 (Rwy 1C/19C) 134.425 348.6 (Rwys 1L/19R and 12/30)	GND CON 121.9 317.8 (EAST) 121.625 348.6 (WEST)



NE-3, 14 MAY 2026 to 11 JUN 2026

NE-3, 14 MAY 2026 to 11 JUN 2026

BRODY AML [30.8] RADAR	MOKRR AML [22.2] RADAR	MODLL AML [15.4] RADAR	MAMAA AML [8.9] RADAR	4000 AML R-010	CHDMN AML [16.9] RADAR
9000	8000	7000	6000	5000	4000
GS 3.00° TCH 54	011°	011°	011°	011°	011°
VGSI and ILS glidepath not coincident (VGSI Angle 3.00/TCH 70).					
4.9 NM	3.7 NM	3.1 NM	3.7 NM	3.1 NM	3.1 NM
1.5 NM	2.6 NM				
CATEGORY	A	B	C	D	
S-ILS 1C	486/18		200 (200-½)		
S-LOC 1C	640/24	354 (400-½)	640/30	354 (400-¾)	
CIRCLING	940-1	628 (700-1)	940-1¾	1180-2¾	868 (900-2¾)

