

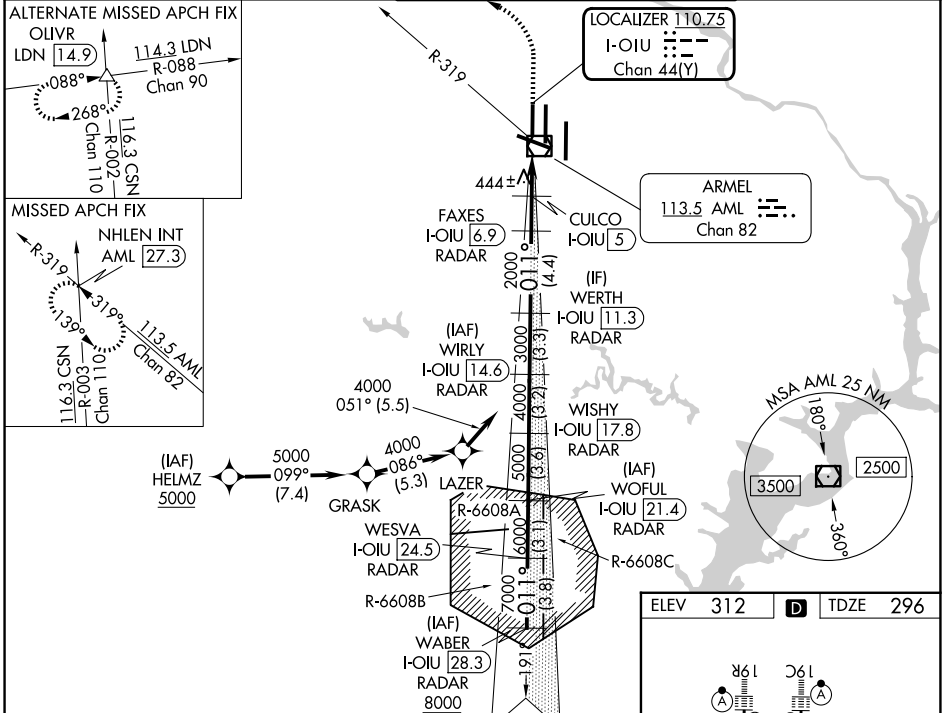
LOC/DME I-OIU 110.75	APP CRS 011°	Rwy Ldg 9400
Chan 44 (Y)		TDZE 296
		Apt Elev 312

ILS or LOC RWY 1L

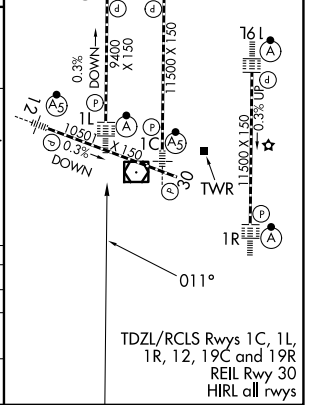
WASHINGTON DULLES INTL (IAD)

RNP APCH - GPS. From HELMZ. DME or RADAR required. DME required for LOC only. RADAR required for procedure entry at WABER.	ALSF-2 	MISSED APPROACH: Climb to 800 then climbing left turn to 3000 on heading 276° and on AML VOR/DME R-319 to NHLEN INT/AML 27.3 DME and hold.
Simultaneous approach authorized.		
For inop ALS, increase LOC Cats C/D visibility to RVR 5500.		

D-ATIS 134.85	POTOMAC APP CON 120.45 306.925 (241°-330°) 128.525 306.925 (091°-240°) 126.1 338.25 (331°-090°)	DULLES TOWER 120.1 317.8 (Rwy 1R/19L) 120.25 348.6 (Rwy 1C/19C) 134.425 348.6 (Rwys 1L/19R and 12/30)	GND CON 121.9 317.8 (EAST) 121.625 348.6 (WEST)
-------------------------	---	---	---



WABER I-OIU [28.3] RADAR	WOFUL I-OIU [21.4] RADAR	WIRLY I-OIU [14.6] RADAR	WESVA I-OIU [24.5] RADAR	WISHY I-OIU [17.8] RADAR	WERTH I-OIU [11.3] RADAR	FAXES I-OIU [6.9] RADAR	CULCO I-OIU [5] RADAR	NHLEN INT
8000	7000	6000	5000	4000	3000	2000	1400	
3.8 NM	3.1 NM	3.6 NM	3.2 NM	3.3 NM	4.4 NM	1.9 NM	2.4	0.9
800	3000	AML R-319	NHLEN INT	VGSi and ILS glidepath not coincident (VGSi Angle 3.00/TCH 70).				
GS 3.00° TCH 55								
CATEGORY	A		B		C		D	
S-ILS 1L	496/18		200 (200-½)					
S-LOC 1L	660/24		364 (400-½)		660/35		364 (400-¾)	
CIRCLING	940-1		628 (700-1)		940-1¾		1180-2¾	
					628 (700-1¾)		868 (900-2¾)	



NE-3, 14 MAY 2026 to 11 JUN 2026

NE-3, 14 MAY 2026 to 11 JUN 2026