

JDUBB FOUR DEPARTURE (RNAV)

**TOP ALTITUDE:
3000**

D-ATIS
 134.85
 CLNC DEL
 135.7 317.8
 CPDLC
 GND CON
 121.9 317.8 (EAST)
 121.625 348.6 (WEST)
 DULLES TOWER
 120.1 317.8 (Rwy 1R/19L)
 120.25 348.6 (Rwy 1C/19C)
 134.425 348.6 (Rwys 1L/19R, 12/30)
 POTOMAC DEP CON
 126.65 350.2



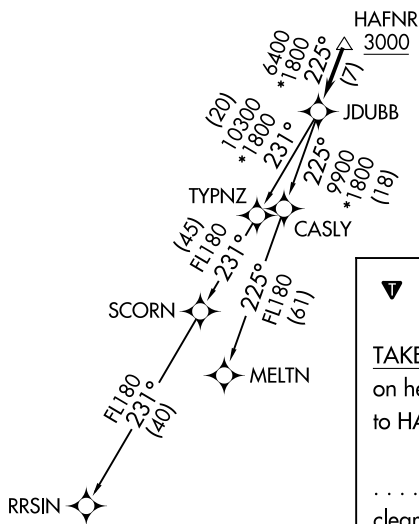
TAKEOFF MINIMUMS:

Rwys 1L/C/R, 19L/C/R, 30:
 Standard with minimum climb
 of 500' per NM to 820.

- NOTE: RNAV 1.
- NOTE: RADAR required.
- NOTE: DME/DME/IRU or GPS required.
- NOTE: Turbo-jets only.

NE-3, 14 MAY 2026 to 11 JUN 2026

NE-3, 14 MAY 2026 to 11 JUN 2026



NOTE: Chart not to scale.

▼ DEPARTURE ROUTE DESCRIPTION

TAKEOFF RUNWAY 1L/C/R, 19L/C/R, 30: Climb on heading assigned by ATC, expect RADAR vectors to HAFNR, then on track 225° to JDUBB, thence. . . .
 . . . on assigned transition. Maintain 3000. Expect clearance to filed altitude within 10 minutes after departure.

- MELTN TRANSITION (JDUBB4.MELTN)
- RRSIN TRANSITION (JDUBB4.RRSIN)