

APP CRS	Rwy Ldg	<b>11089</b>
<b>191°</b>	TDZE	<b>272</b>
	Apt Elev	<b>312</b>

# RNAV (RNP) Z RWY 19C

WASHINGTON DULLES INTL (IAD)

RNP AR APCH - GPS.

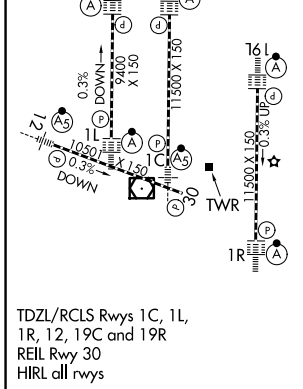
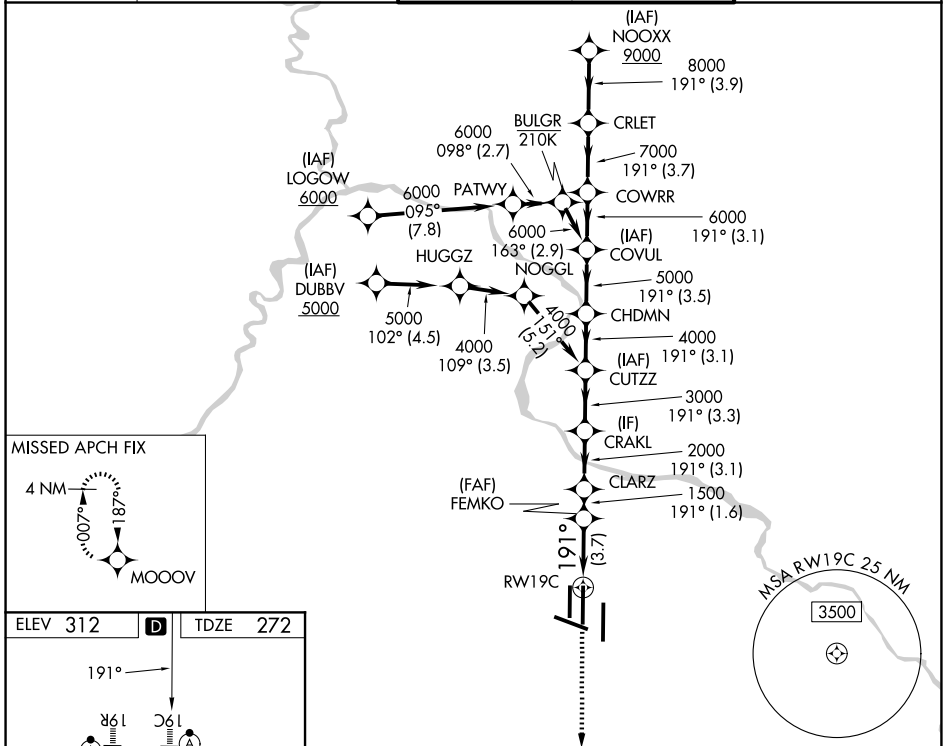
▼ For uncompensated Baro-VNAV systems, procedure NA below -13°C or above 54°C. Simultaneous approach authorized. For inop ALS, increase RNP 0.11 visibility all Cats to RVR 4500, and RNP 0.25 visibility all Cats to RVR 5500.

ALSF-2



MISSED APPROACH: Climb to 3000 direct MOOOV and hold.

D-ATIS	POTOMAC APP CON	DULLES TOWER	GND CON
<b>134.85</b>	<b>120.45 306.925</b> (241°-330°)	<b>120.1 317.8</b> (Rwy 1R/19L)	<b>121.9 317.8</b> (EAST)
	<b>128.525 306.925</b> (091°-240°)	<b>120.25 348.6</b> (Rwy 1C/19C)	<b>121.625 348.6</b> (WEST)
	<b>126.1 338.25</b> (331°-090°)	<b>134.425 348.6</b> (Rwys 1L/19R and 12/30)	



3000	MOOOV	VGSi and RNAV glidepath not coincident (VGSi Angle 3.00/TCH 72).								NOOXX
		FEMKO	CLARZ	CRAKL	CUTZZ	CHDMN	COVUL	COWRR	CRLET	NOOXX
		1500	2000	3000	4000	5000	6000	7000	8000	9000
		3.7 NM	1.6 NM	3.1 NM	3.3 NM	3.1 NM	3.5 NM	3.1 NM	3.7 NM	3.9 NM
		GP 3.00° TCH 54								

CATEGORY	A	B	C	D
RNP 0.11 DA		554/24	282 (300-½)	
RNP 0.25 DA		624/30	352 (400-¾)	
RNP 0.30 DA		702/40	430 (400-¾)	

## AUTHORIZATION REQUIRED

NE-3, 14 MAY 2026 to 11 JUN 2026

NE-3, 14 MAY 2026 to 11 JUN 2026