



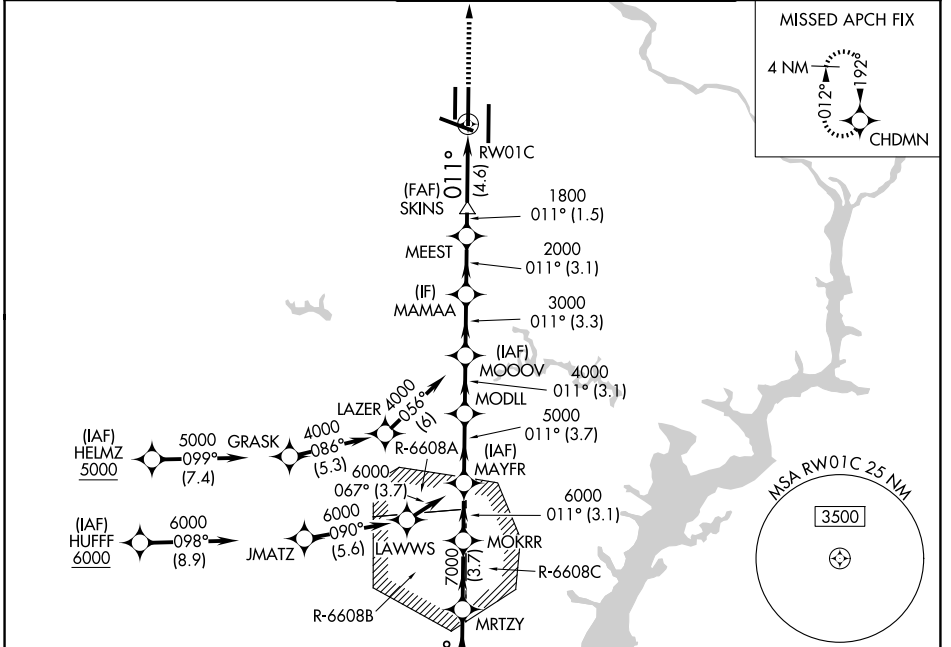
APP CRS	Rwy Ldg	11500
011°	TDZE	286
	Apt Elev	312

RNAV (RNP) Z RWY 1C

WASHINGTON DULLES INTL (IAD)

RNP AR APCH - GPS. Authorization required.		MALSR	 MISSED APPROACH: Climb to 4000 direct CHDMN and hold, continue climb-in-hold to 4000.
 Simultaneous approach authorized. For uncompensated Baro-VNAV systems, procedure NA below -13°C or above 54°C. For inop ALS, increase RNP 0.11 all Cats visibility to RVR 4000.			

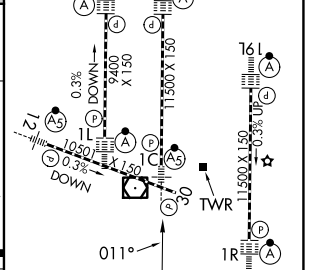
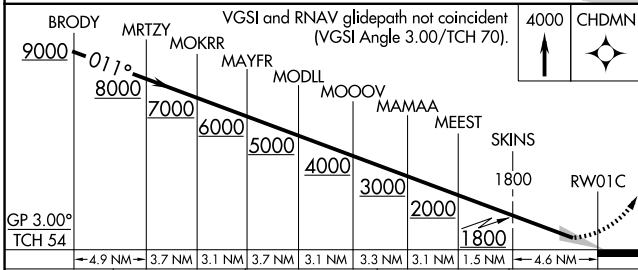
D-ATIS	POTOMAC APP CON	DULLES TOWER	GND CON
134.85	120.45 306.925 (241°-330°)	120.1 317.8 (Rwy 1R/19L)	121.9 317.8 (EAST)
	128.525 306.925 (091°-240°)	120.25 348.6 (Rwy 1C/19C)	121.625 348.6 (WEST)
	126.1 338.25 (331°-090°)	134.425 348.6 (Rwys 1L/19R and 12/30)	



NE-3, 14 MAY 2026 to 11 JUN 2026

NE-3, 14 MAY 2026 to 11 JUN 2026

ELEV 312	D	TDZE 286
----------	----------	----------



CATEGORY	A	B	C	D
RNP 0.11 DA		540/24	254 (300-½)	
RNP 0.30 DA		730/45	444 (500-¾)	

AUTHORIZATION REQUIRED

TDZL/RCLS Rwys 1C, 1L, 1R, 12, 19C and 19R
 REL Rwy 30
 HIRL all rwys