

|             |          |             |
|-------------|----------|-------------|
| APP CRS     | Rwy Ldg  | <b>9400</b> |
| <b>011°</b> | TDZE     | <b>296</b>  |
|             | Apt Elev | <b>312</b>  |

# RNAV (RNP) Z RWY 1L

WASHINGTON DULLES INTL (IAD)

RNP AR APCH - GPS.

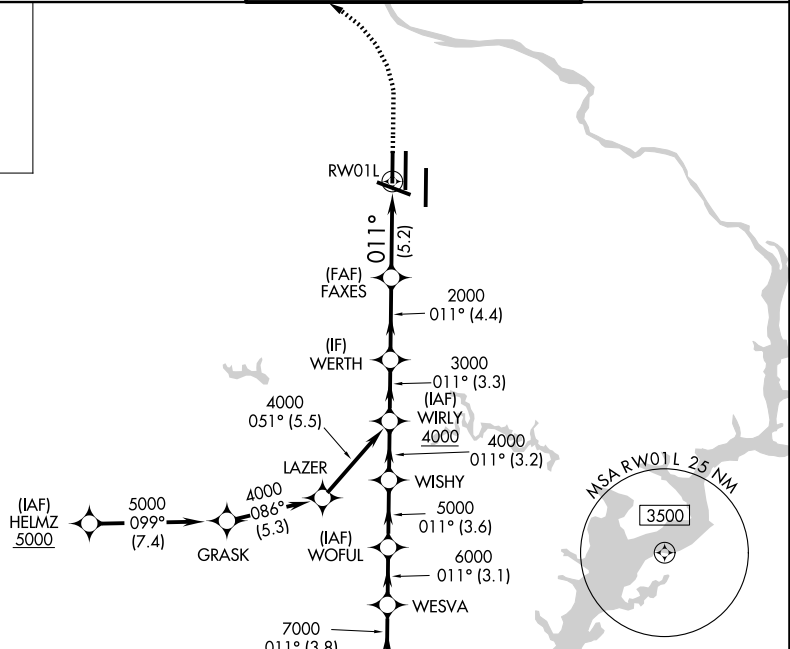
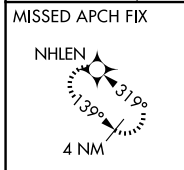
ALSF-2



MISSED APPROACH: Climb to 800 then climbing left turn to 3000 direct NHLEN and hold.

▼ For uncompensated Baro-VNAV systems, procedure NA below -13°C or above 54°C. Simultaneous approach authorized. For inop ALS, increase RNP 0.11 all Cats visibility to RVR 4500 and RNP 0.30 all Cats visibility to RVR 6000.

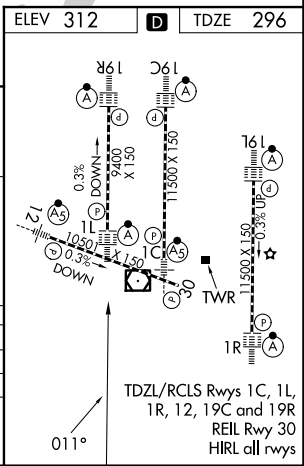
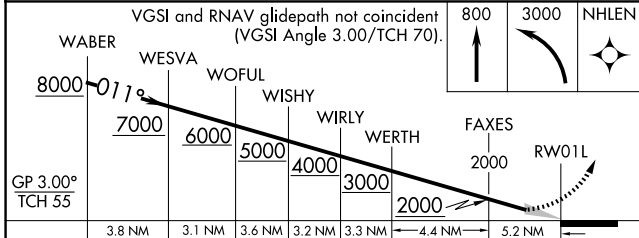
|               |                                    |  |                             |
|---------------|------------------------------------|--|-----------------------------|
| D-ATIS        | POTOMAC APP CON                    | DULLES TOWER                                 | GND CON                     |
| <b>134.85</b> | <b>120.45 306.925</b> (241°-330°)  | <b>120.1 317.8</b> (Rwy 1R/19L)              | <b>121.9 317.8</b> (EAST)   |
|               | <b>128.525 306.925</b> (091°-240°) | <b>120.25 348.6</b> (Rwy 1C/19C)             | <b>121.625 348.6</b> (WEST) |
|               | <b>126.1 338.25</b> (331°-090°)    | <b>134.425 348.6</b> (Rwys 1L/19R and 12/30) |                             |



NE-3, 14 MAY 2026 to 11 JUN 2026

NE-3, 14 MAY 2026 to 11 JUN 2026

|          |          |          |
|----------|----------|----------|
| ELEV 312 | <b>D</b> | TDZE 296 |
|----------|----------|----------|



|             |   |        |             |   |
|-------------|---|--------|-------------|---|
| CATEGORY    | A | B      | C           | D |
| RNP 0.11 DA |   | 572/24 | 276 (300-½) |   |
| RNP 0.30 DA |   | 710/40 | 414 (400-¾) |   |

**AUTHORIZATION REQUIRED**