

WAAS CH 40305 W19B	APP CRS 191°	Rwy Ldg 11089 TDZE 272 Apt Elev 312
--	------------------------	--

RNAV (GPS) Y RWY 19C

WASHINGTON DULLES INTL (IAD)

RNP APCH - GPS.

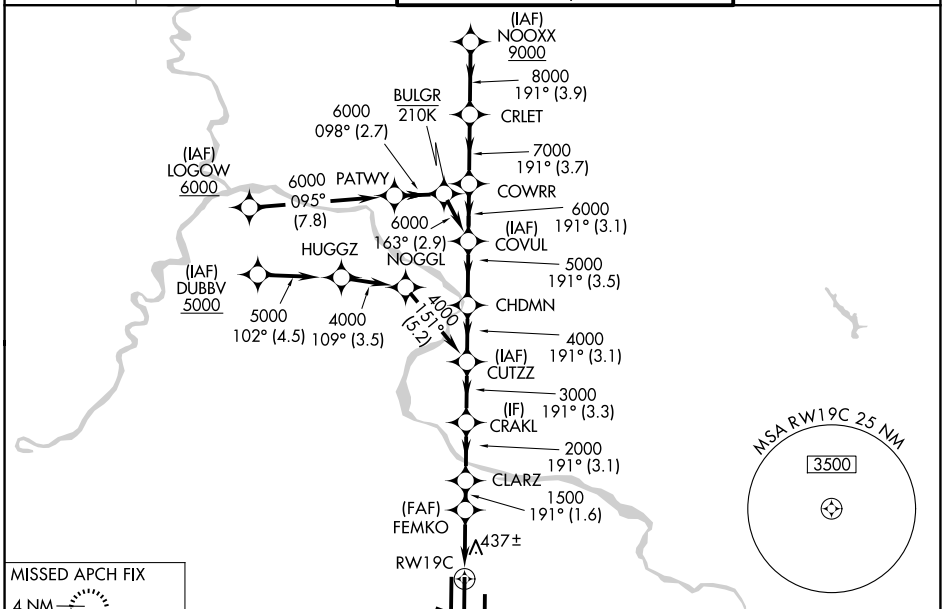
Simultaneous approach authorized. LNAV procedure NA during simultaneous operations.
Use of FD or AP required during simultaneous operations. For uncompensated Baro-VNAV systems, LNAV/VNAV NA below -13°C or above 54°C.

ALSF-2



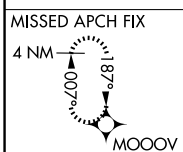
MISSED APPROACH:
Climb to 3000 direct
MOOOV and hold.

D-ATIS 134.85	POTOMAC APP CON 120.45 306.925 (241°-330°) 128.525 306.925 (091°-240°) 126.1 338.25 (331°-090°)	DULLES TOWER 120.1 317.8 (Rwys 1R/19L) 120.25 348.6 (Rwy 1C/19C) 134.425 348.6 (Rwys 1L/19R and 12/30)	GND CON 121.9 317.8 (EAST) 121.625 348.6 (WEST)
-------------------------	---	--	---



NE-3, 14 MAY 2026 to 11 JUN 2026

NE-3, 14 MAY 2026 to 11 JUN 2026



3000	MOOOV	VGSI and RNAV glidepath not coincident (VGSI Angle 3.00/TCH 72).				NOOXX				
		FEMKO	CLARZ	CRACKL	CUTZZ	CHDMN	COVUL	COWRR	CRLET	9000
		1.1 NM to RWY19C	1.6 NM	3.1 NM	3.3 NM	3.1 NM	3.5 NM	3.1 NM	3.7 NM	3.9 NM
CATEGORY		A	B		C		D			
LPV DA			472/18		200 (200-1/2)					
LNAV/VNAV DA			700/40		428 (400-3/4)					
LNAV MDA		700/24	428 (400-1/2)		700/40		428 (400-3/4)			
CIRCLING		940-1	628 (700-1)		940-1 3/4		1180-2 3/4			
					628 (700-1 3/4)		868 (900-2 3/4)			

