

WAAS CH 86709 W19D	APP CRS 191°	Rwy Ldg 9400 TDZE 278 Apt Elev 312
--	------------------------	---

RNAV (GPS) Y RWY 19R

WASHINGTON DULLES INTL (IAD)

RNP APCH - GPS.

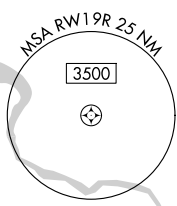
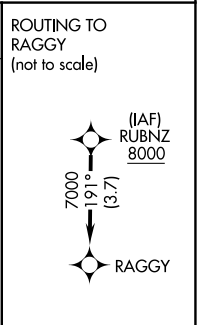
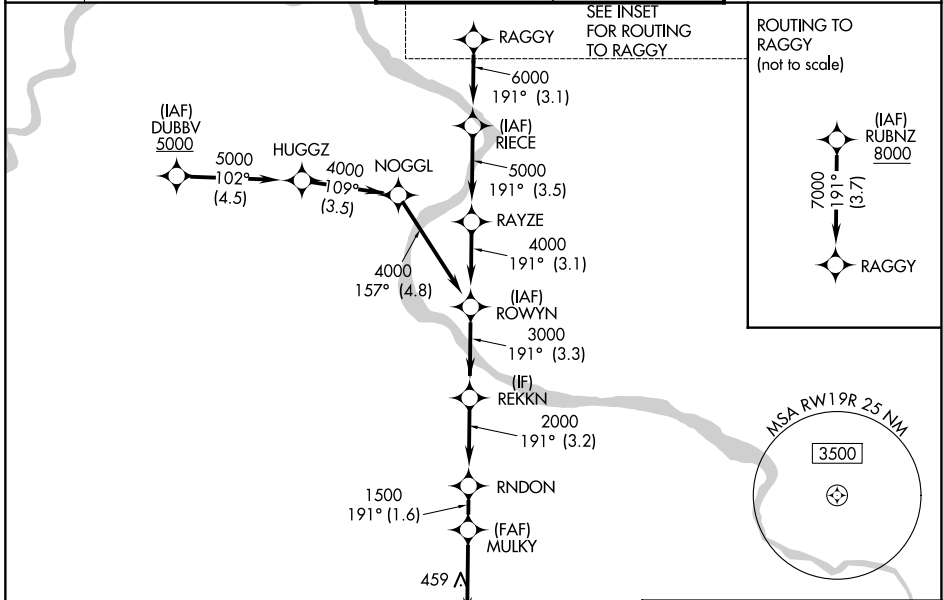
⚠ For uncompensated Baro-VNAV systems, LNAV/VNAV NA below -13°C or above 54°C. Simultaneous approach authorized. LNAV procedure NA during simultaneous operations. Use of FD or AP required during simultaneous operations.

ALSF-2

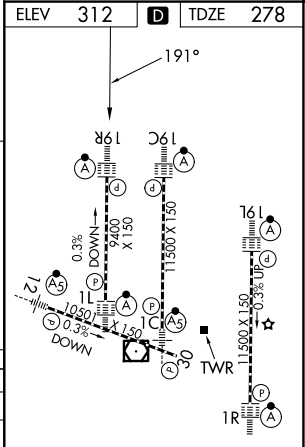


MISSED APPROACH: Climb to 800 then climbing right turn to 3000 direct AMOSS and hold.

D-ATIS 134.85	POTOMAC APP CON 120.45 306.925 (241°-330°) 128.525 306.925 (091°-240°) 126.1 338.25 (331°-090°)	DULLES TOWER 120.1 317.8 (Rwy 1R/19L) 120.25 348.6 (Rwy 1C/19C) 134.425 348.6 (Rwy 1L/19R and 12/30)	GND CON 121.9 317.8 (EAST) 121.625 348.6 (WEST)
-------------------------	---	--	---



800	3000	AMOSS	VGSIs and RNAV glidepath not coincident (VGSi Angle 3.00°/TCH 70°).				RUBNZ 8000			
				MULKY	RNDON	REKKN	ROWYN	RAYZE	RIECE	RAGGY
1.2 NM to RWY19R		1.500		1500	2000	3000	4000	5000	6000	7000
1.2		2.5		1.6 NM	3.2 NM	3.3 NM	3.1 NM	3.5 NM	3.1 NM	3.7 NM



CATEGORY	A	B	C	D
LPV DA	478/18		200 (200-1/2)	
LNAV/VNAV DA	708/40		430 (400-3/4)	
LNAV MDA	720/24	442 (500-1/2)	720/45	442 (500-3/8)
CIRCLING	940-1	628 (700-1)	940-1 3/4 628 (700-1 3/4)	1180-2 3/4 868 (900-2 3/4)

TDZL/RCLS Rwy 1C, 1L, 1R, 12, 19C and 19R
REIL Rwy 30
HIRL all rwy's

NE-3, 14 MAY 2026 to 11 JUN 2026

NE-3, 14 MAY 2026 to 11 JUN 2026