

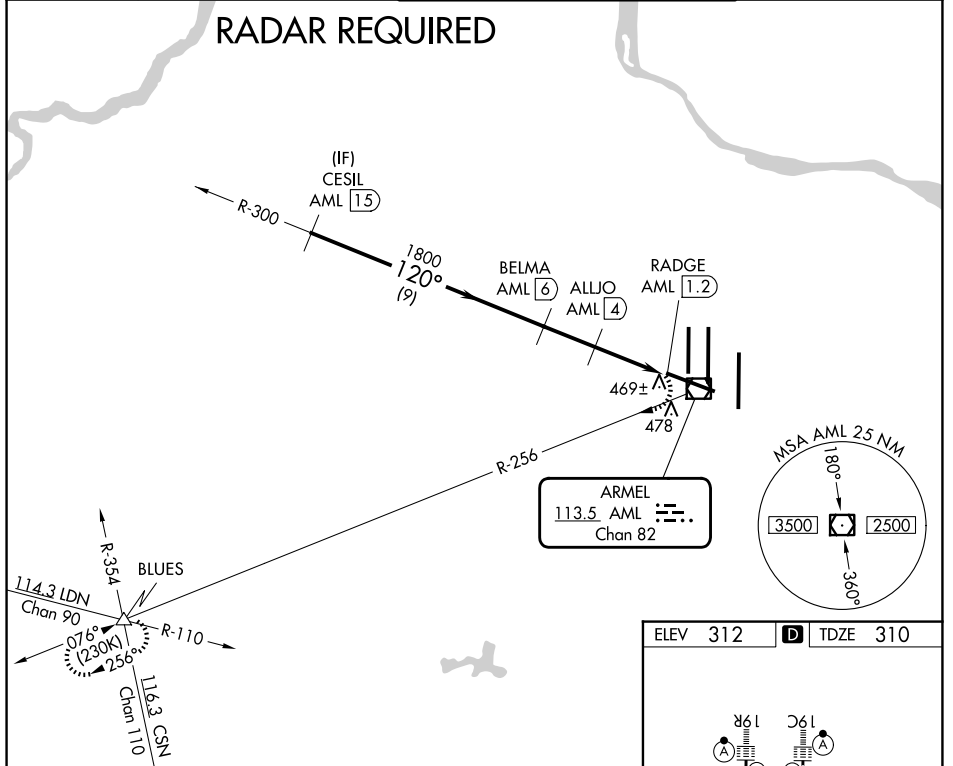
VOR/DME AML 113.5 Chan 82	APP CRS 120°	Rwy Ldg TDZE Apt Elev	10501 310 312
-----------------------------------------------	------------------------	-----------------------------	------------------------------------------

VOR/DME RWY 12

WASHINGTON DULLES INTL (IAD)

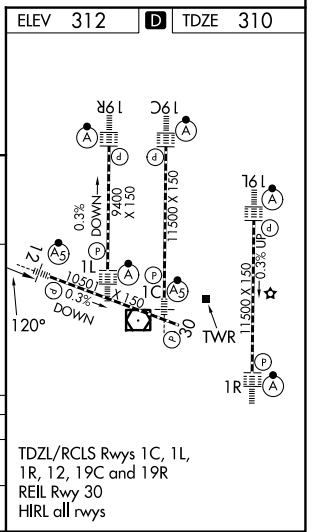
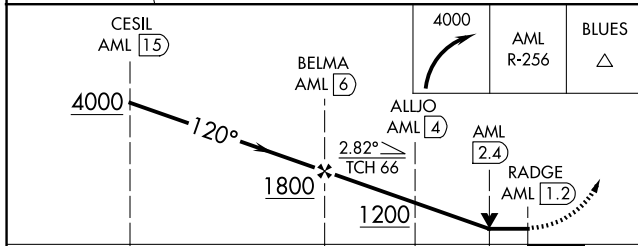
	POTOMAC APP CON 120.45 306.925 (241°-330°) 128.525 306.925 (091°-240°) 126.1 338.25 (331°-090°)		DULLES TOWER 120.1 317.8 (Rwys 1R/19L) 120.25 348.6 (Rwys 1C/19C) 134.425 348.6 (Rwys 1L/19R and 12/30)	GND CON 121.9 317.8 (EAST) 121.625 348.6 (WEST)
	D-ATIS 134.85	MISSED APPROACH: Climbing right turn to 4000 on AML VOR/DME R-256 to BLUES INT and hold.		

RADAR REQUIRED



NE-3, 14 MAY 2026 to 11 JUN 2026

NE-3, 14 MAY 2026 to 11 JUN 2026



	ELEV 312		TDZE 310	
CATEGORY	A	B	C	D
S-12	740/24	430 (500-½)	740/40	430 (500-¾)
CIRCLING	940-1	628 (700-1)	940-1¾ 628 (700-1¾)	1180-2¾ 868 (900-2¾)

TDZL/RCLS Rwys 1C, 1L,
1R, 12, 19C and 19R
REIL Rwy 30
HIRL all rwys