

(BLOKR8.BLOKR) 26078

AL-5103 (FAA)

AURORA MUNI (ARR)
CHICAGO/AURORA, ILLINOIS

BLOKR EIGHT DEPARTURE (RNAV)

CHICAGO DEP CON
133.5 349.0
ATIS
125.85
GND CON
121.7
AURORA TOWER ★
120.6 (CTAF)

RNAV 1 - DME/DME/IRU or GPS.
RADAR required.

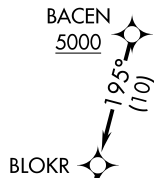
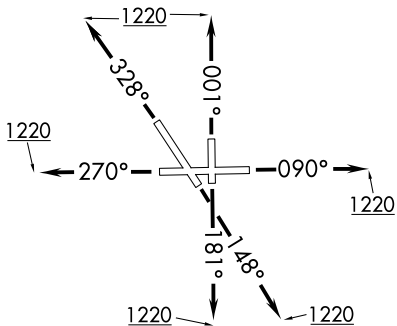
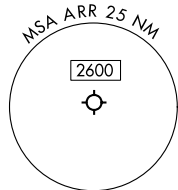
**TOP ALTITUDE:
ASSIGNED BY ATC**

TAKEOFF MINIMUMS:

Rwys 9, 15, 18, 27, 33, 36: Standard.

NOTE: Turbojet departures maintain 250K
until advised by ATC.

NOTE: ROBERTS Transition: For aircraft inbound
to CMI or STL, or as assigned by ATC.



DEPARTURE ROUTE DESCRIPTION

TAKEOFF RUNWAY 9: Climb on heading 090° to 1220,
for vectors to BACEN, thence. . .

TAKEOFF RUNWAY 15: Climb on heading 148° to 1220,
for vectors to BACEN, thence. . .

TAKEOFF RUNWAY 18: Climb on heading 181° to 1220,
for vectors to BACEN, thence. . .

TAKEOFF RUNWAY 27: Climb on heading 270° to 1220,
for vectors to BACEN, thence. . .

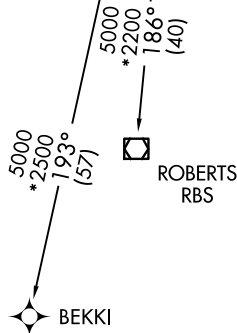
TAKEOFF RUNWAY 33: Climb on heading 328° to 1220,
for vectors to BACEN, thence. . .

TAKEOFF RUNWAY 36: Climb on heading 001° to 1220,
for vectors to BACEN, thence. . .

. . . on track 195° to BLOKR, then on transition, maintain ATC
assigned altitude. Expect filed altitude 10 minutes after departure.

BEKKI TRANSITION (BLOKR8.BEKKI):

ROBERTS TRANSITION (BLOKR8.RBS):



NOTE: Chart not to scale.

BLOKR EIGHT DEPARTURE (RNAV)

(BLOKR8.BLOKR) 19MAR26

CHICAGO/AURORA, ILLINOIS
AURORA MUNI (ARR)

EC-3, 14 MAY 2026 to 11 JUN 2026

EC-3, 14 MAY 2026 to 11 JUN 2026