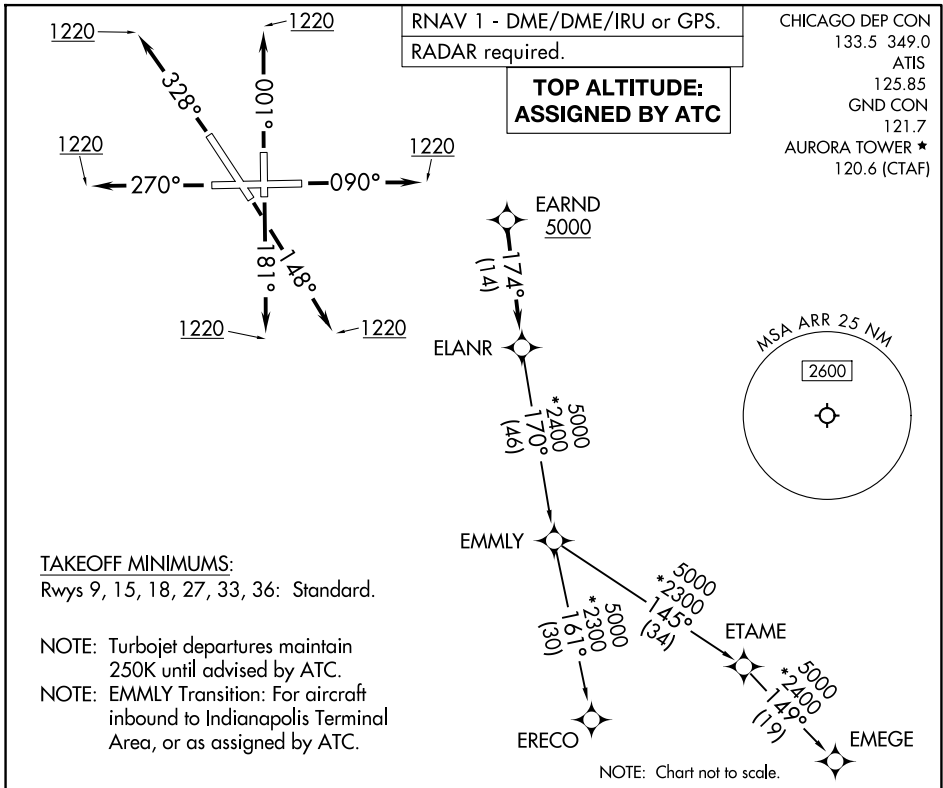


(ELANR9.ELANR) 26078

AL-5103 (FAA)

AURORA MUNI (ARR)
CHICAGO/AURORA, ILLINOIS

ELANR NINE DEPARTURE (RNAV)



EC-3, 14 MAY 2026 to 11 JUN 2026

EC-3, 14 MAY 2026 to 11 JUN 2026

DEPARTURE ROUTE DESCRIPTION

TAKEOFF RUNWAY 9: Climb on heading 090° to 1220, for vectors to EARND, thence. . . .

TAKEOFF RUNWAY 15: Climb on heading 148° to 1220, for vectors to EARND, thence. . . .

TAKEOFF RUNWAY 18: Climb on heading 181° to 1220, for vectors to EARND, thence. . . .

TAKEOFF RUNWAY 27: Climb on heading 270° to 1220, for vectors to EARND, thence. . . .

TAKEOFF RUNWAY 33: Climb on heading 328° to 1220, for vectors to EARND, thence. . . .

TAKEOFF RUNWAY 36: Climb on heading 001° to 1220, for vectors to EARND, thence. . . .

. . . . on track 174° to ELANR, then on transition, maintain ATC assigned altitude. Expect filed altitude 10 minutes after departure.

EMEGE TRANSITION (ELANR9.EMEGE):

EMMLY TRANSITION (ELANR9.EMMLY):

ERECO TRANSITION (ELANR9.ERECO):

ELANR NINE DEPARTURE (RNAV)
(ELANR9.ELANR) 19MAR26

CHICAGO/AURORA, ILLINOIS
AURORA MUNI (ARR)