

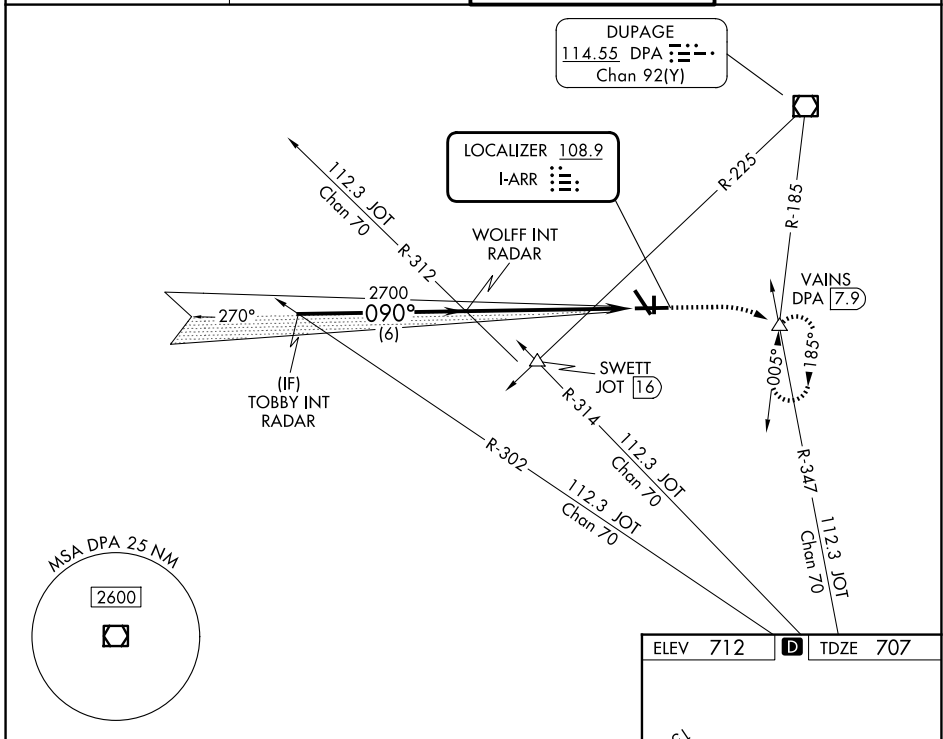
LOC I-ARR <b>108.9</b>	APP CRS <b>090°</b>	Rwy Ldg TDZE Apt Elev	<b>6501</b> <b>707</b> <b>712</b>
---------------------------	------------------------	-----------------------------	---

# ILS or LOC RWY 9

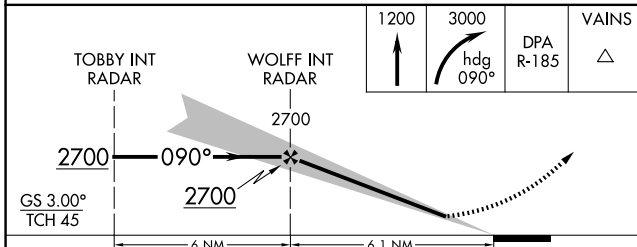
AURORA MUNI (A.R.R.)

RADAR required for procedure entry.		MALSRL	MISSED APPROACH: Climb to 1200 then climbing right turn to 3000 on heading 090° and on DPA VOR/DME R-185 to VAINS INT/DPA 7.9 DME and hold, continue climb-in-hold to 3000.
▼ For inop ALS, increase S-LOC 9 Cat C/D visibilities to 1½ SM.			

ATIS <b>125.85</b>	CHICAGO APP CON <b>133.5 349.0</b>	AURORA TOWER ★ <b>120.6 (CTAF)</b>	GND CON <b>121.7</b>
-----------------------	---------------------------------------	---------------------------------------	-------------------------



ELEV 712		TDZE 707
----------	--	----------



↑ 1200		↷ 3000	DPA R-185	△ VAINS	
↑ hdg 090°					
MIRL Rwy 18-36					
HIRL Rwy 15-33 and 9-27					
REIL Rwy 15, 18, 27, and 36					
FAF to MAP 6.1 NM					
Knots	60	90	120	150	180
Min:Sec	6:06	4:04	3:03	2:26	2:02

CATEGORY	A	B	C	D
S-ILS 9	907-½ 200 (200-½)			
S-LOC 9	1220-½ 513 (600-½)		1220-1 513 (600-1)	
CIRCLING	1220-1 508 (600-1)		1300-1½ 588 (600-1½)	1320-2 608 (700-2)

EC-3, 14 MAY 2026 to 11 JUN 2026

EC-3, 14 MAY 2026 to 11 JUN 2026