

WAAS CH 72941 W15A	APP CRS 148°	Rwy Ldg TDZE Apt Elev	5503 712 712
--	------------------------	-----------------------------	---

RNAV (GPS) RWY 15

AURORA MUNI (A.R.R.)

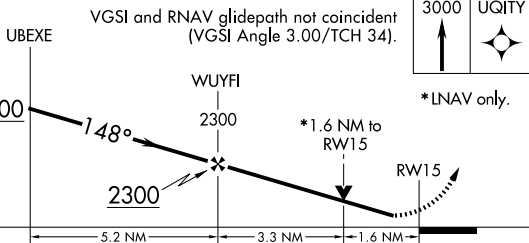
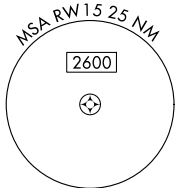
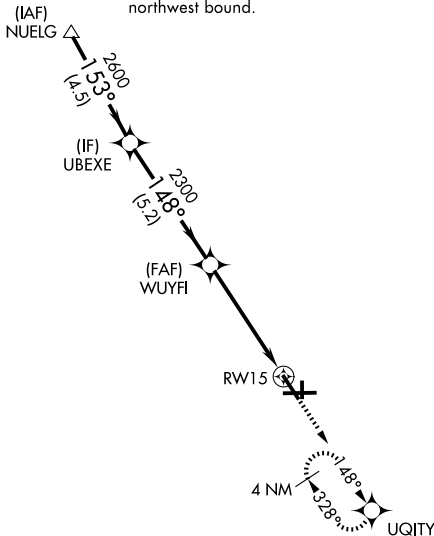
RNP APCH - GPS.

▼ For uncompensated Baro-VNAV systems, LNAV/VNAV NA below -20°C or above 54°C. Rwy 15 helicopter visibility reduction below 3/4 SM NA.

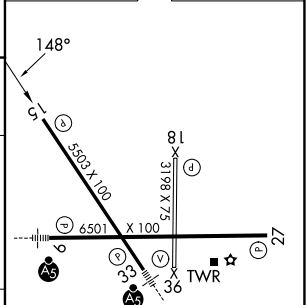
MISSED APPROACH: Climb to 3000 direct UQITY and hold, continue climb-in-hold to 3000.

ATIS 125.85	CHICAGO APP CON 133.5 349.0	AURORA TOWER* 120.6 (CTAF) 0	GND CON 121.7
-----------------------	---------------------------------------	--	-------------------------

Procedure NA for arrivals at NUELG on V172 and V177 northwest bound.



ELEV 712	D TDZE 712
----------	-------------------



CATEGORY	A	B	C	D
LPV DA		962-3/4	250 (300-3/4)	
LNAV/VNAV DA		962-3/4	250 (300-3/4)	
LNAV MDA	1260-1	548 (600-1)	1260-1 5/8	548 (600-1 5/8)
CIRCLING	1260-1	548 (600-1)	1300-1 5/8 588 (600-1 5/8)	1320-2 608 (700-2)

HIRL Rwy 15-33 and 9-27 0

MIRL Rwy 18-36 0

REIL Rwy 15, 18, 27, and 36 0