

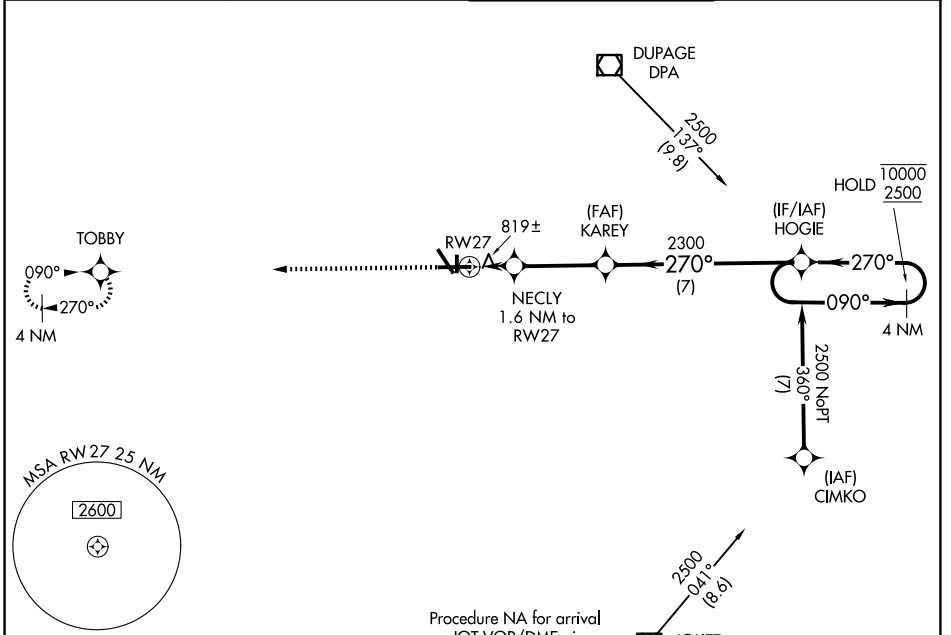
WAAS CH <b>48822</b> <b>W27A</b>	APP CRS <b>270°</b>	Rwy Ldg TDZE Apt Elev	<b>6460</b> <b>707</b> <b>712</b>
--	------------------------	-----------------------------	---

# RNAV (GPS) RWY 27

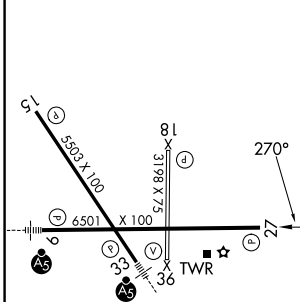
AURORA MUNI (A.R.R.)

RNP APCH - GPS.		MISSED APPROACH: Climb to 2700 direct TOBBY and hold.	
▽ For uncompensated Baro-VNAV systems, LNAV/VNAV NA below -16°C or above 54°C.			

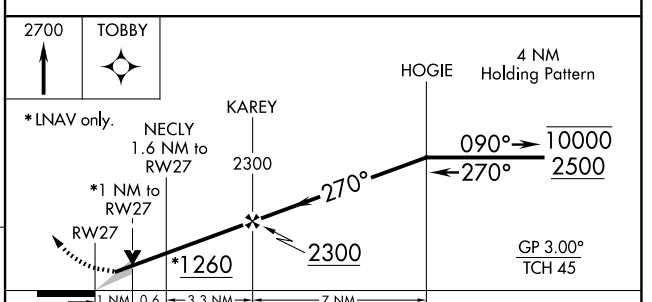
ATIS <b>125.85</b>	CHICAGO APP CON <b>133.5 349.0</b>	AURORA TOWER * <b>120.6 (CTAF) 0</b>	GND CON <b>121.7</b>
-----------------------	---------------------------------------	---	-------------------------



ELEV <b>712</b>	<b>D</b>	TDZE <b>707</b>
-----------------	----------	-----------------



MIRL Rwy 18-36	HIRL Rwy 15-33 and 9-27	REIL Rwy 15, 18, 27, and 36
----------------	-------------------------	-----------------------------



CATEGORY	A	B	C	D
LPV DA		907-3/4	200 (200-3/4)	
LNAV/VNAV DA		1002-1	295 (300-1)	
LNAV MDA		1080-1	373 (400-1)	
CIRCLING	1200-1	488 (500-1)	1300-1 1/2 588 (600-1 1/2)	1320-2 608 (700-2)

EC-3, 14 MAY 2026 to 11 JUN 2026

EC-3, 14 MAY 2026 to 11 JUN 2026