

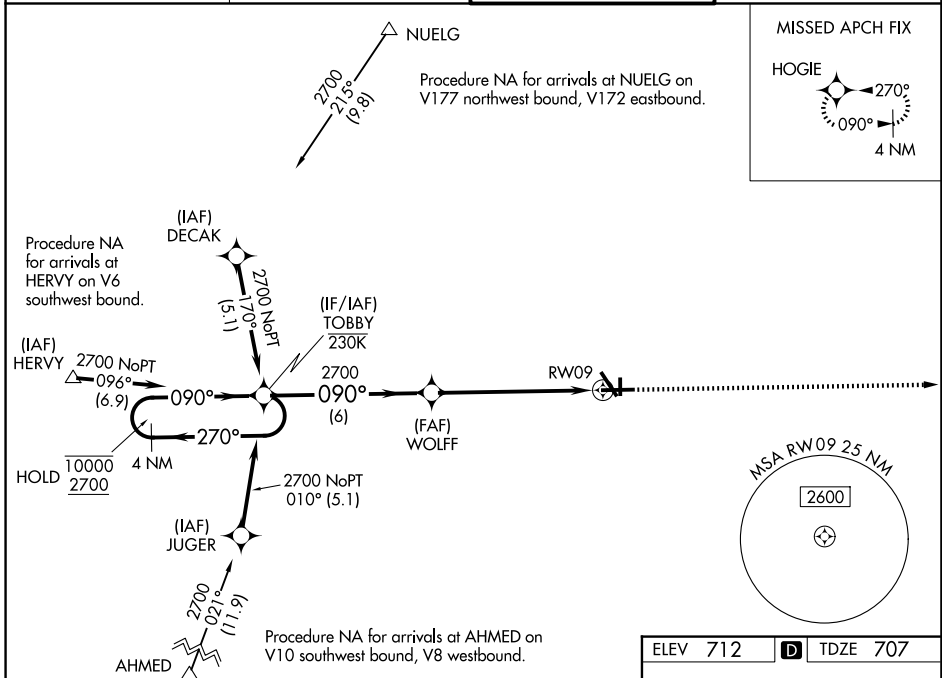
WAAS CH <b>45522</b> <b>W09A</b>	APP CRS <b>090°</b>	Rwy Ldg <b>6501</b> TDZE <b>707</b> Apt Elev <b>712</b>
--	------------------------	---

# RNAV (GPS) RWY 9

AURORA MUNI (A.R.R.)

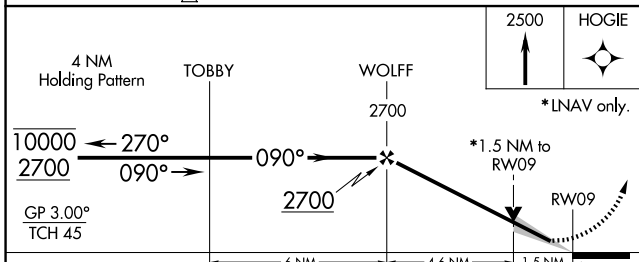
RNP APCH - GPS.	MALSR 	MISSED APPROACH: Climb to 2500 direct HOGIE and hold.
<p>▼ For uncompensated Baro-VNAV systems, LNAV/VNAV NA below -20°C or above 54°C. For inop ALS, increase LNAV Cat C/D visibility to 1 3/8 SM.</p>		

ATIS <b>125.85</b>	CHICAGO APP CON <b>133.5 349.0</b>	AURORA TOWER ★ <b>120.6 (CTAF) 0</b>	GND CON <b>121.7</b>
-----------------------	---------------------------------------	---	-------------------------

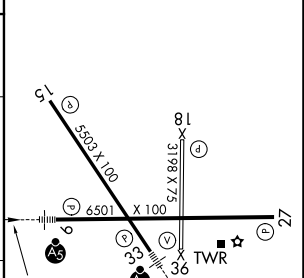


EC-3, 14 MAY 2026 to 11 JUN 2026

EC-3, 14 MAY 2026 to 11 JUN 2026



ELEV 712	D	TDZE 707
----------	---	----------



CATEGORY	A	B	C	D
LPV DA		957-1/2	250 (300-1/2)	
LNAV/VNAV DA		1035-1/2	328 (400-1/2)	
LNAV MDA	1220-1/2	513 (600-1/2)	1220-1	513 (600-1)
CIRCLING	1220-1	508 (600-1)	1300-1/2 588 (600-1/2)	1320-2 608 (700-2)

MIRL Rwy 18-36 0

HIRL Rwy 15-33 and 9-27 0

REIL Rwy 15, 18, 27, and 36 0