

(BLOKR8.BLOKR) 26078

AL-5104 (FAA)

# BLOKR EIGHT DEPARTURE (RNAV)

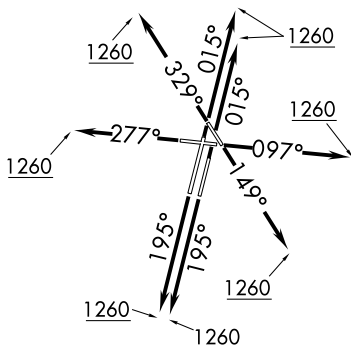
DUPAGE (DPA)  
CHICAGO/WEST CHICAGO, ILLINOIS

CHICAGO DEP CON  
133.5 349.0  
ATIS  
132.075  
GND CON  
121.8  
DUPAGE TOWER  
120.9 257.8

RNAV 1 - DME/DME/IRU or GPS.

RADAR required.

**TOP ALTITUDE:  
ASSIGNED BY ATC**



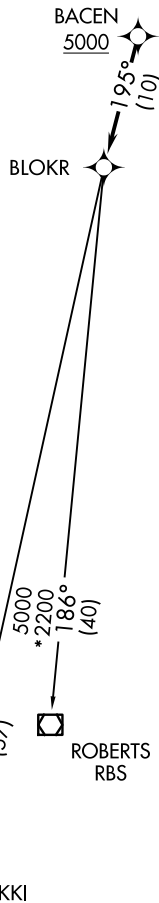
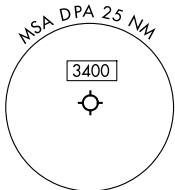
### TAKEOFF MINIMUMS:

Rwys 2L/R, 10, 20L/R, 28, 33: Standard.

Rwy 15: 300-1 $\frac{1}{2}$  or standard with minimum climb  
of 210'/NM to 1000.

NOTE: Turbojet departures maintain 250K  
until advised by ATC.

NOTE: ROBERTS Transition: For aircraft inbound  
to CMI or STL, or as assigned by ATC.



## DEPARTURE ROUTE DESCRIPTION

TAKEOFF RUNWAYS 2L/R: Climb on heading 015° to 1260,  
for vectors to BACEN, thence. . . .

TAKEOFF RUNWAY 10: Climb on heading 097° to 1260,  
for vectors to BACEN, thence. . . .

TAKEOFF RUNWAY 15: Climb on heading 149° to 1260,  
for vectors to BACEN, thence. . . .

TAKEOFF RUNWAYS 20L/R: Climb on heading 195° to 1260,  
for vectors to BACEN, thence. . . .

TAKEOFF RUNWAY 28: Climb on heading 277° to 1260,  
for vectors to BACEN, thence. . . .

TAKEOFF RUNWAY 33: Climb on heading 329° to 1260,  
for vectors to BACEN, thence. . . .

. . . .on track 195° to BLOKR, then on transition, maintain ATC  
assigned altitude. Expect filed altitude 10 minutes after departure.

BEKKI TRANSITION (BLOKR8.BEKKI):

ROBERTS TRANSITION (BLOKR8.RBS):

NOTE: Chart not to scale.

# BLOKR EIGHT DEPARTURE (RNAV)

(BLOKR8.BLOKR) 19MAR26

CHICAGO/WEST CHICAGO, ILLINOIS  
DUPAGE (DPA)

EC-3, 14 MAY 2026 to 11 JUN 2026

EC-3, 14 MAY 2026 to 11 JUN 2026