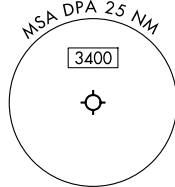
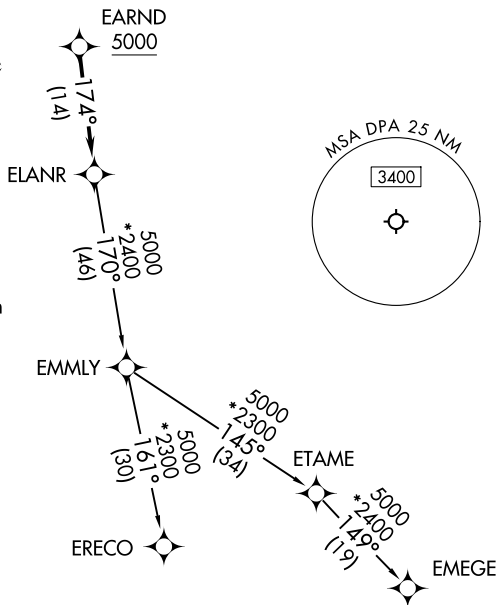
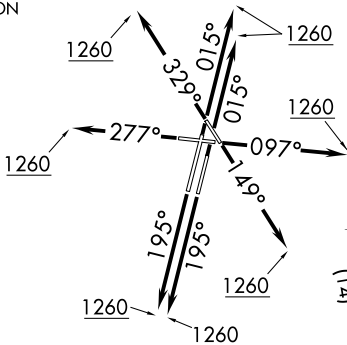


ELANR NINE DEPARTURE (RNAV)

CHICAGO DEP CON
133.5 349.0
ATIS
132.075
GND CON
121.8
DUPAGE TOWER
120.9 257.8

RNAV 1 - DME/DME/IRU or GPS.
RADAR required.

**TOP ALTITUDE:
ASSIGNED BY ATC**



TAKEOFF MINIMUMS:

Rwys 2L/R, 10, 20L/R, 28, 33: Standard.
Rwy 15: 300-1³/₈ or standard with minimum
climb of 210'/NM to 1000.

NOTE: Turbojet departures maintain
250K until advised by ATC.

NOTE: EMMLY Transition: For aircraft
inbound to Indianapolis Terminal
Area, or as assigned by ATC.

NOTE: Chart not to scale.

DEPARTURE ROUTE DESCRIPTION

- TAKEOFF RUNWAYS 2L/R: Climb on heading 015° to 1260, for vectors to EARND, thence. . . .
- TAKEOFF RUNWAY 10: Climb on heading 097° to 1260, for vectors to EARND, thence. . . .
- TAKEOFF RUNWAY 15: Climb on heading 149° to 1260, for vectors to EARND, thence. . . .
- TAKEOFF RUNWAYS 20L/R: Climb on heading 195° to 1260, for vectors to EARND, thence. . . .
- TAKEOFF RUNWAY 28: Climb on heading 277° to 1260, for vectors to EARND, thence. . . .
- TAKEOFF RUNWAY 33: Climb on heading 329° to 1260, for vectors to EARND, thence. . . .

. . . .on track 174° to ELANR, then on transition, maintain ATC assigned altitude.
Expect filed altitude 10 minutes after departure.

- EMEGE TRANSITION (ELANR9.EMEGE):
- EMMLY TRANSITION (ELANR9.EMMLY):
- ERECO TRANSITION (ELANR9.ERECO):

ELANR NINE DEPARTURE (RNAV)

EC-3, 14 MAY 2026 to 11 JUN 2026

EC-3, 14 MAY 2026 to 11 JUN 2026