

LOC I-CWF	APP CRS	Rwy Ldg	10702
110.7	154°	TDZE	16
		Apt Elev	17

ILS or LOC RWY 15

CHENNAULT INTL (CWF)

ADF or DME required for procedure entry. ADF or DME required for LOC only.

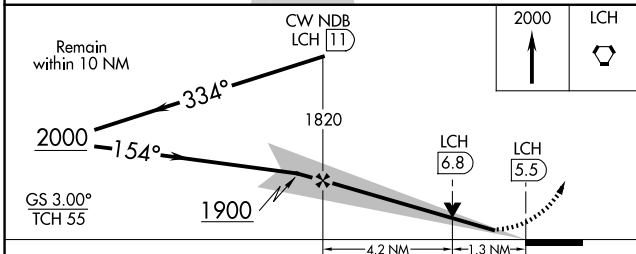
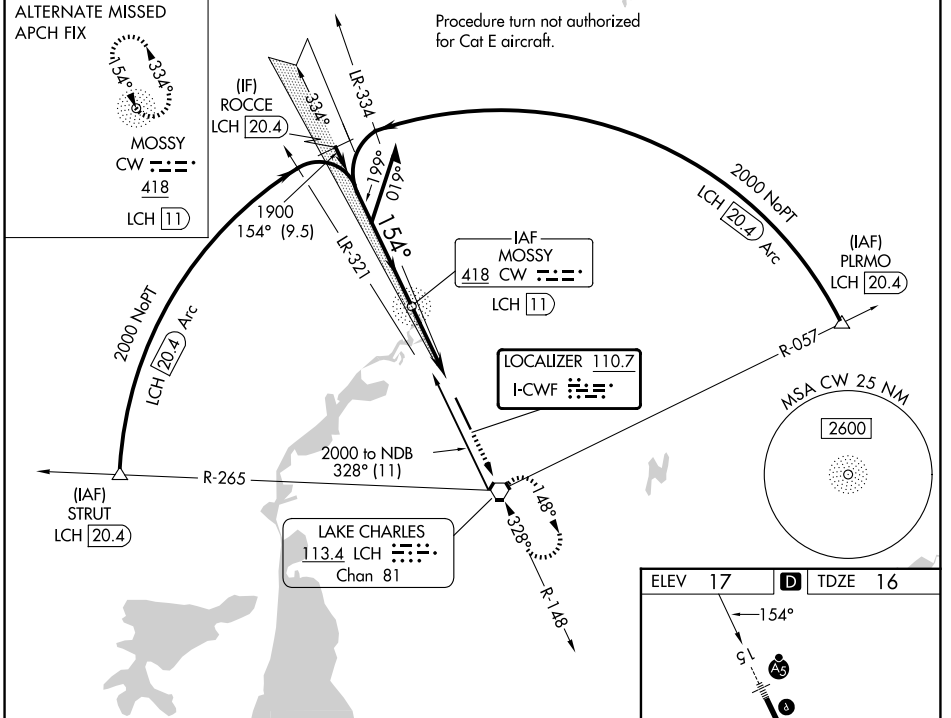
NA VDP NA when using Lake Charles Rgnl altimeter setting. When local altimeter setting not received, use Lake Charles Rgnl altimeter setting: Increase DA to 232 feet; Increase all MDAs 20 feet and visibility Circling Cat D ¼ SM. For inop ALS, increase S-ILS 15 Cat E visibility to ¾ SM, and S-LOC 15 Cats C/D/E to 1 ¾ SM. For inop ALS when using Lake Charles altimeter settings, increase S-ILS 15 Cat E visibility to ¾ SM, and S-LOC 15 Cats C/D/E to 1 ¾ SM. DME from LCH VORTAC. DME use requires simultaneous reception of I-CWF and LCH DME.

ASR

MALSRS

MISSED APPROACH: Climb to 2000 direct LCH VORTAC and hold, continue climb-in-hold to 2000.

ATIS	LAKE CHARLES APP CON*	CHENNAULT TOWER*	GND CON	UNICOM
120.0	119.8 282.3	124.2 (CTAF) 290.4	121.65 275.8	122.95



ELEV 17 **D** TDZE 16

154°

5

A5

3

TWR ☆

10702 X 200

33

REIL Rwy 33 **1**

HIRL Rwy 15-33 **1**

FAF to MAP 5.5 NM

Knots	60	90	120	150	180
Min:Sec	5:30	3:40	2:45	2:12	1:50

CATEGORY	A	B	C	D	E
S-ILS 15	216-½ 200 (200-½)				
S-LOC 15	480-½	464 (500-½)	480-1 464 (500-1)		
CIRCLING	640-1	623 (700-1)	640-1¾ 623 (700-1¾)	740-2¼ 723 (800-2¼)	900-3 883 (900-3)

SC-4, 14 MAY 2026 to 11 JUN 2026

SC-4, 14 MAY 2026 to 11 JUN 2026