

VORTAC SBV <b>110.4</b> Chan 41	APP CRS <b>081°</b>	Rwy Ldg TDZE Apt Elev	<b>N/A</b> <b>N/A</b> <b>420</b>
---------------------------------------	------------------------	-----------------------------	--

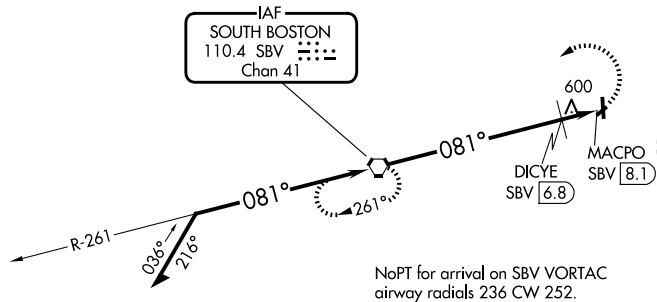
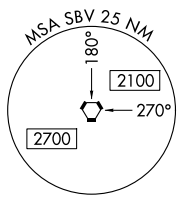
**VOR-A**

WILLIAM M TUCK (W78)

**⚠** Night landing: Rwy 19 NA. Helicopter visibility reduction below 1 SM NA. When local altimeter setting not received, use Danville altimeter setting and increase all MDA 80 feet; increase all Cats visibility and DICYE fix minimums Cat C visibility ¼ mile. Circling NA to Rwy 6-24.

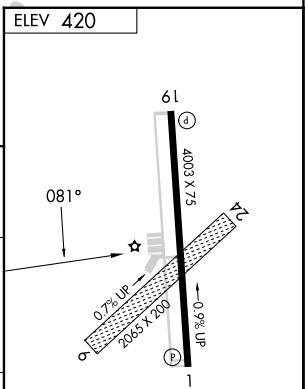
**MISSED APPROACH:** Climbing left turn to 3000 direct SBV VORTAC and hold.

AWOS-3 <b>119.425</b>	WASHINGTON CENTER <b>124.05 352.0</b>	UNICOM <b>122.8 (CTAF) 0</b>
--------------------------	--	---------------------------------



NE-3, 14 MAY 2026 to 11 JUN 2026

NE-3, 14 MAY 2026 to 11 JUN 2026



Remain within 10 NM	3000	261°	SBV VORTAC	3000	SBV
*1280 when using Danville altimeter setting.	3000	081°	3000	081°	DICYE SBV [6.8]
					MACPO SBV [8.1]
					*1200
					6.8 NM
					1.3 NM

CATEGORY	A	B	C	D
CIRCLING	1200-1	780 (800-1)	1200-2¼ 780 (800-2¼)	NA
DICYE FIX MINIMUMS				
CIRCLING	960-1	540 (600-1)	1060-1¾ 640 (700-1¾)	NA

MIRL Rwy 1-19 0	REIL Rwys 1 and 19 0				
FAF to MAP 8.1 NM					
Knots	60	90	120	150	180
Min:Sec	8:06	5:24	4:03	3:14	2:42

**VOR-A**