

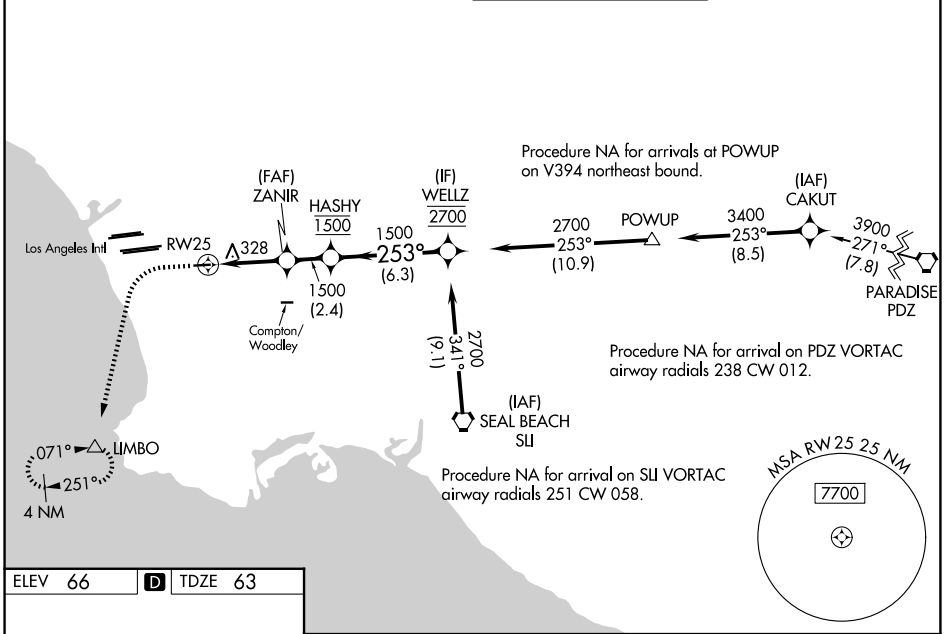
|  |                        |   |
|--|------------------------|---|
| WAAS<br>CH <b>65825</b><br><b>W25A</b> | APP CRS<br><b>253°</b> | Rwy Ldg <b>4194</b><br>TDZE <b>63</b><br>Apt Elev <b>66</b> |
|--|------------------------|---|

# RNAV (GPS) RWY 25

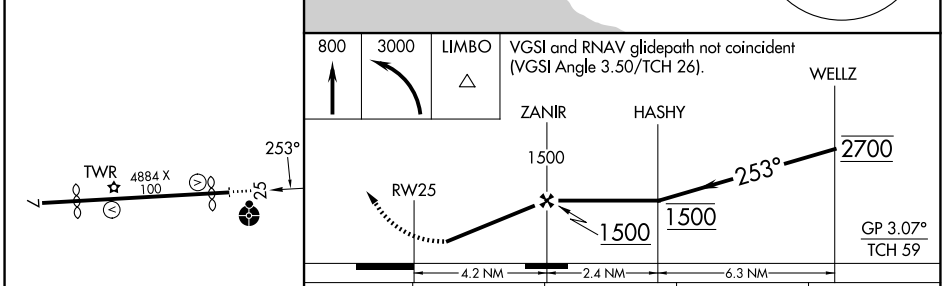
JACK NORTHROP FLD/HAWTHORNE MUNI (HHR)

|   |  |           |  |
|---|--|-----------|--|
| RNP APCH - GPS.   |  | ODALS<br> | MISSED APPROACH: Climb to 800 then climbing left turn to 3000 direct LIMBO and hold, continue climb-in-hold to 3000. |
| Circling NA north of Rwy 7-25. Rwy 25 helicopter visibility reduction below 1 SM NA. For uncompensated Baro-VNAV systems, LNAV/VNAV NA below 5°C or above 54°C. Inop table does not apply. Simultaneous approach authorized. LNAV procedure NA during simultaneous operations. Use of FD or AP required during simultaneous operations. Circling Rwy 7 NA at night. |  |           |  |

|                      |                                     |   |                         |
|----------------------|-------------------------------------|---|-------------------------|
| ATIS<br><b>118.4</b> | SOCAL APP CON<br><b>124.9 269.0</b> | HAWTHORNE TOWER ★<br><b>121.1</b> (CTAF) <b>0 257.8</b> | GND CON<br><b>125.1</b> |
|----------------------|-------------------------------------|---|-------------------------|



|         |          |         |
|---------|----------|---------|
| ELEV 66 | <b>D</b> | TDZE 63 |
|---------|----------|---------|



|              | A  | B           | C                    | D   |
|--------------|--|-------------|----------------------|---|
| LPV DA       | 577-1 $\frac{3}{8}$ 514 (600-1 $\frac{3}{8}$ ) |             |                      |   |
| LNAV/VNAV DA | 580-1 $\frac{3}{8}$ 517 (600-1 $\frac{3}{8}$ ) |             |                      |   |
| LNAV MDA     | 580-1  | 517 (600-1) | 580-1 $\frac{3}{8}$  | 517 (600-1 $\frac{3}{8}$ )                        |
| CIRCLING     | 620-1  | 554 (600-1) | 780-2<br>714 (800-2) | 780-2 $\frac{1}{4}$<br>714 (800-2 $\frac{1}{4}$ ) |

MIRL Rwy 7-25

HAWTHORNE, CALIFORNIA  
Amdt 3 03NOV22

JACK NORTHROP FLD/HAWTHORNE MUNI (HHR)  
33°55'N-118°20'W  
**RNAV (GPS) RWY 25**

SW-3, 14 MAY 2026 to 11 JUN 2026

SW-3, 14 MAY 2026 to 11 JUN 2026