

WAAS CH 53516 W22A	APP CRS 219°	Rwy Ldg TDZE Apt Elev	6184 666 674
--	------------------------	-----------------------------	---

RNAV (GPS) RWY 22

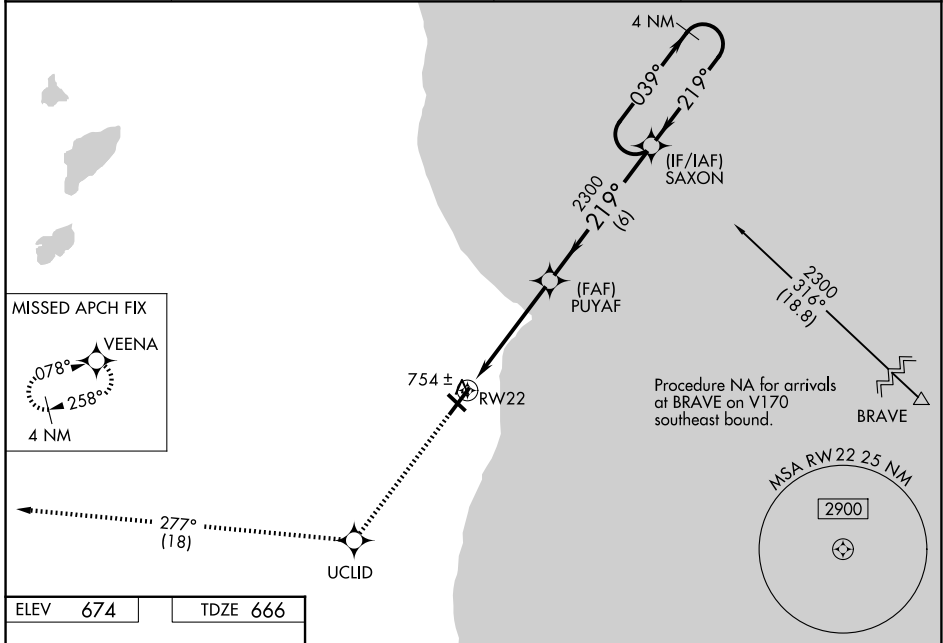
BATTEN INTL (RAC)

RNP APCH - GPS.

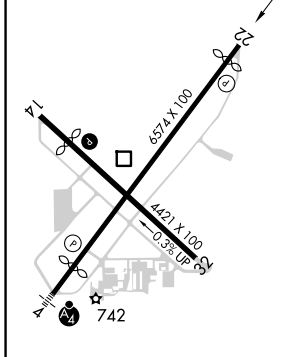
⚠ For uncompensated Baro-VNAV systems, LNAV/VNAV NA below -19°C or above 54°C. When local altimeter setting not received, use MKE altimeter setting and increase LPV DA to 984 feet; increase LNAV/VNAV DA to 1032 feet; increase all MDAs 40 feet and LNAV visibility Cat C/D ¼ SM, and Circling visibility Cat C/D ¼ SM. Circling Rwy 14, 22, 32 NA at night. Rwy 22 helicopter visibility reduction below 1 SM NA. Baro-VNAV NA when using MKE altimeter setting. Straight-in Rwy 22 NA at night.

MISSED APPROACH:
Climb to 3000 direct UCLID and track 277° to VEENA and hold.

ASOS 121.425	MILWAUKEE APP CON 135,875 317.725	CLNC DEL 120.15	UNICOM 123.075 (CTAF) 0
------------------------	---	---------------------------	-----------------------------------



ELEV 674	TDZE 666
----------	----------



3000	UCLID	tr 277°	VEENA	VGSI and RNAV glidepath not coincident (VGSI Angle 3.00/TCH 46).	4 NM Holding Pattern
			PUYAF		SAXON
			2300		2300
			219°		039°
			2300		219°
			4.9 NM		6 NM
					GP 3.00° TCH 55

CATEGORY	A	B	C	D
LPV DA		949-1	283 (300-1)	
LNAV/VNAV DA		997-1	331 (400-1)	
LNAV MDA	1080-1	414 (500-1)	1080-1½	414 (500-1½)
CIRCLING	1140-1 466 (500-1)	1160-1 486 (500-1)	1380-2 706 (800-2)	1380-2¼ 706 (800-2¼)

HIRL Rwy 4-22 **0**
MIRL Rwy 14-32 **0**
REIL Rws 14, 22 and 32 **0**

EC-3, 14 MAY 2026 to 11 JUN 2026

EC-3, 14 MAY 2026 to 11 JUN 2026