

APP CRS	Rwy Ldg	<b>4421</b>
<b>315°</b>	TDZE	<b>667</b>
	Apt Elev	<b>674</b>

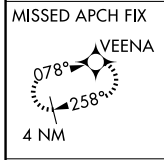
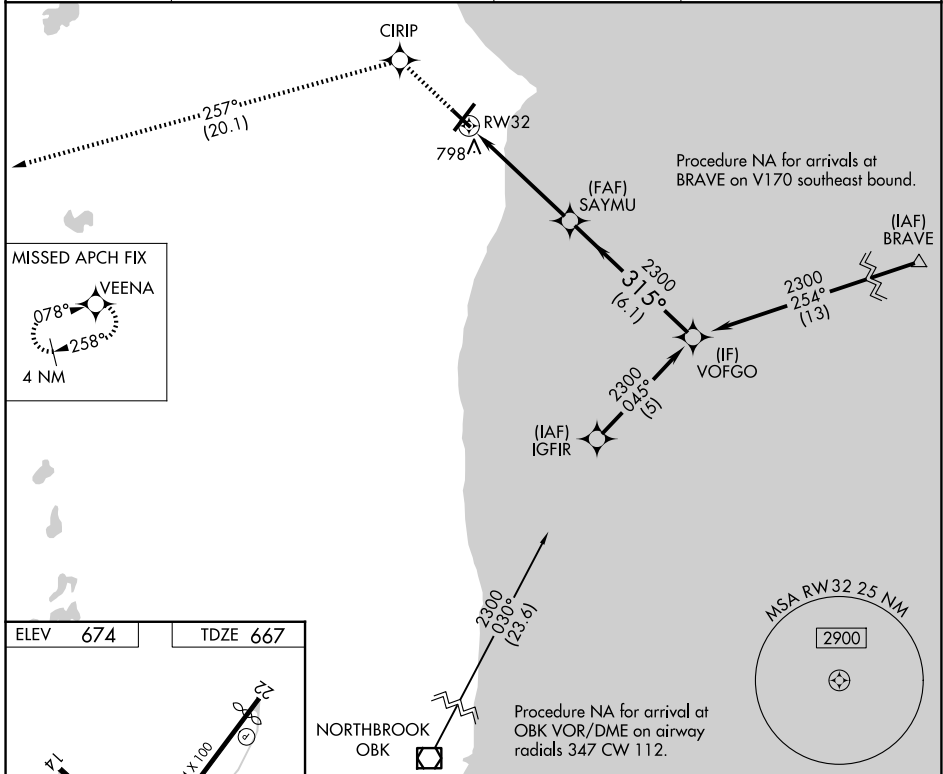
# RNAV (GPS) RWY 32

BATTEN INTL (RAC)

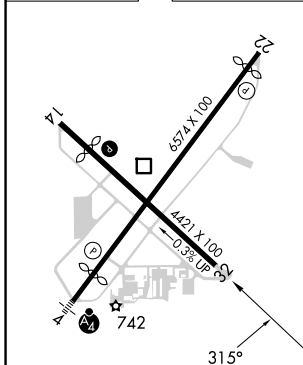
**▼** DME/DME RNP-0.3 NA. VDP NA when using General Mitchell Intl altimeter setting.  
**▲** When local altimeter setting not received, use General Mitchell Intl altimeter setting: Increase all MDA 40 feet and visibility Cat C and D ¼ SM. Rwy 32 helicopter visibility reduction below ¾ SM NA. Circling Rwy 14 NA at night.

**MISSED APPROACH:** Climb to 3000 direct CIRIP and track 257° to VEENA and hold.

ASOS <b>121.425</b>	MILWAUKEE APP CON <b>135.875 317.725</b>	CLNC DEL <b>120.15</b>	UNICOM <b>123.075 (CTAF) 0</b>
------------------------	---------------------------------------------	---------------------------	-----------------------------------



ELEV 674	TDZE 667
----------	----------



3000	CIRIP	VEENA	SAYMU		VOFGO	
↑	✧	tr 257° ✧				
	1.1 NM to RWY 32		315°		2300	
	RWY 32		2300		2300	
	1.1 NM		3.9 NM		6.1 NM	
CATEGORY	A		B		C	
LNAV MDA	1060-1		393 (400-1)		1060-1½ 393 (400-1½)	
CIRCLING	1140-1 466 (500-1)		1160-1 486 (500-1)		1380-2 706 (800-2)	
					1380-2¼ 706 (800-2¼)	

HIRL Rwy 4-22 0  
 MIRL Rwy 14-32 0  
 REIL Rwy 14, 22 and 32 0

EC-3, 14 MAY 2026 to 11 JUN 2026

EC-3, 14 MAY 2026 to 11 JUN 2026