


|  |                        |                             |   |
|--|------------------------|-----------------------------|---|
| WAAS<br>CH <b>97516</b><br><b>W04A</b> | APP CRS<br><b>039°</b> | Rwy Ldg<br>TDZE<br>Apt Elev | <b>5840</b><br><b>668</b><br><b>674</b> |
|--|------------------------|-----------------------------|---|

# RNAV (GPS) RWY 4

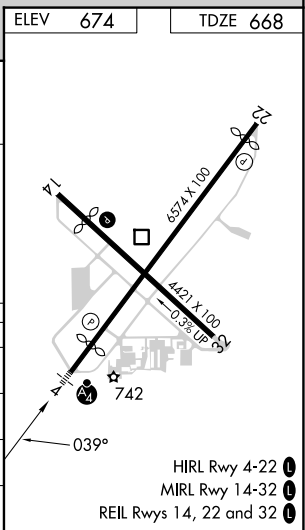
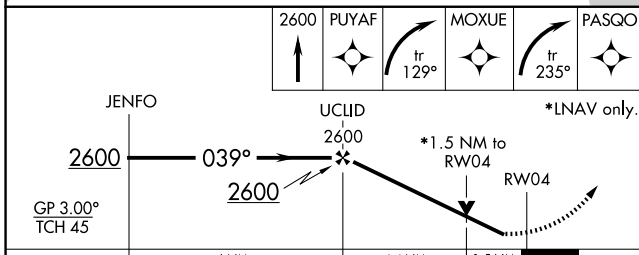
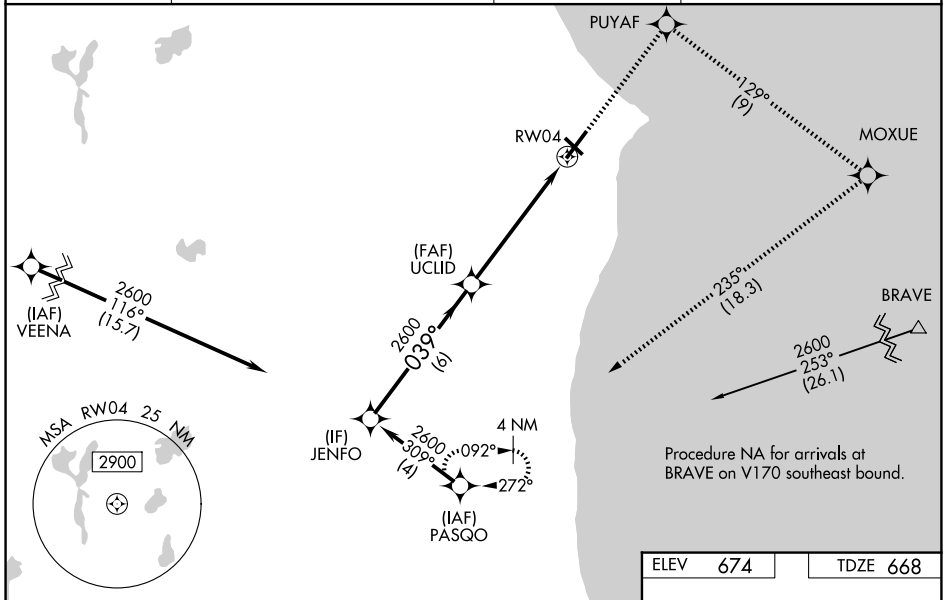
BATTEN INTL (RAC)

**⚠** Baro-VNAV NA when using General Mitchell Intl altimeter setting. For uncompensated Baro-VNAV systems, LNAV/VNAV NA below -20°C (-4°F) or above 54°C (130°F). DME/DME RNP-0.3 NA. VDP NA when using General Mitchell Intl altimeter setting. When local altimeter setting not received, use General Mitchell Intl altimeter setting; increase LPV DA to 1023 and all visibilities 1/8 SM; increase LNAV/VNAV DA to 1135 and all visibilities 1/8 SM; increase all MDA 40 feet and visibility Cat C and D 1/4 SM. Circling Rwy 14 NA at night. Rwy 4 helicopter visibility reduction below 3/4 SM NA. Inop table does not apply.

**MALSF** 

**MISSED APPROACH:** Climb to 2600 direct PUYAF and right turn on track 129° to MOXUE and right turn on track 235° to PASGO and hold.

|                        |   |                           |   |
|------------------------|---|---------------------------|---|
| ASOS<br><b>121.425</b> | MILWAUKEE APP CON<br><b>135.875 317.725</b> | CLNC DEL<br><b>120.15</b> | UNICOM<br><b>123.075 (CTAF)</b>  |
|------------------------|---|---------------------------|---|



| CATEGORY     | A      | B           | C                     | D                       |
|--------------|--------|-------------|-----------------------|-------------------------|
| LPV DA       |        | 988-1       | 320 (400-1)           |                         |
| LNAV/VNAV DA |        | 1100-1½     | 432 (500-1½)          |                         |
| LNAV MDA     | 1180-1 | 512 (600-1) | 1180-1¾               | 512 (600-1¾)            |
| CIRCLING     | 1180-1 | 506 (600-1) | 1380-2<br>706 (800-2) | 1380-2¼<br>706 (800-2¼) |

EC-3, 14 MAY 2026 to 11 JUN 2026

EC-3, 14 MAY 2026 to 11 JUN 2026