

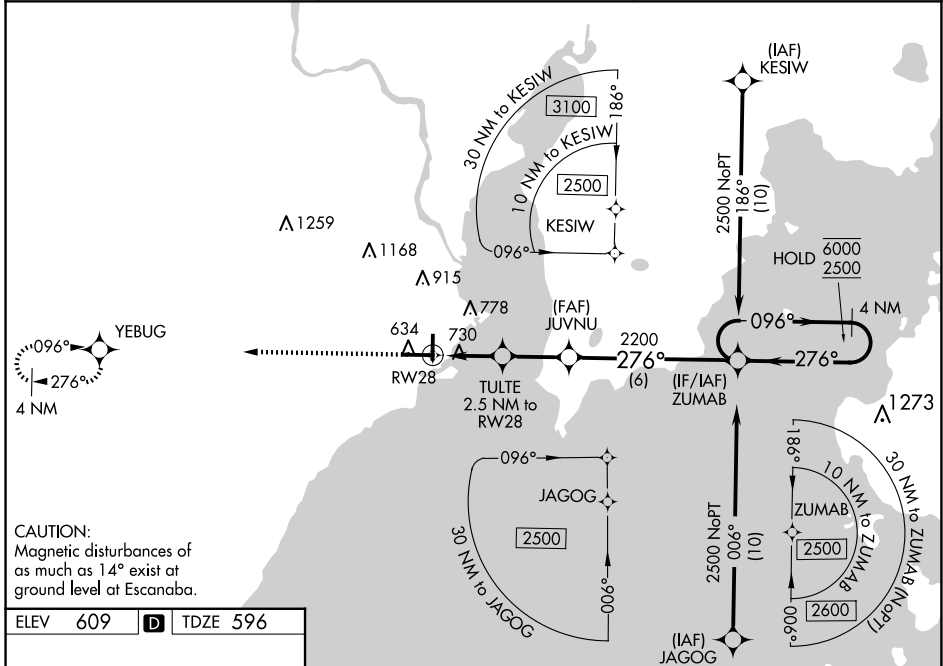
WAAS CH 63128 W28A	APP CRS 276°	Rwy Idg TDZE Apt Elev	6498 596 609
--	------------------------	-----------------------------	---

RNAV (GPS) RWY 28

DELTA COUNTY (E/S/C)

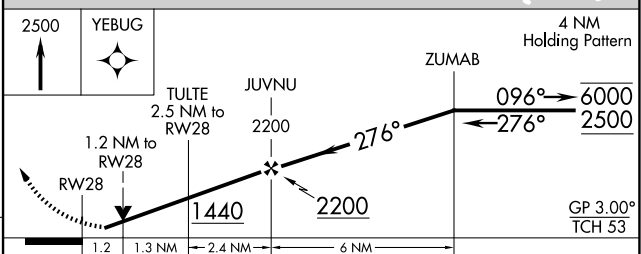
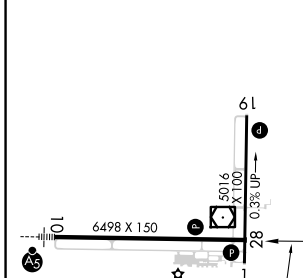
RNP APCH - GPS.	MISSED APPROACH: Climb to 2500 direct YEBUG and hold.
-----------------	---

AWOS-3PT 121.425	MINNEAPOLIS CENTER 127.65	UNICOM 122.8 (CTAF) 0
----------------------------	-------------------------------------	---------------------------------



CAUTION:
Magnetic disturbances of
as much as 14° exist at
ground level at Escanaba.

ELEV 609	D	TDZE 596
----------	----------	----------



CATEGORY	A	B	C	D
LPV DA		846-1	250 (300-1)	
LNAV/VNAV DA		1076-1 $\frac{5}{8}$	480 (500-1 $\frac{5}{8}$)	
LNAV MDA	1040-1	444 (500-1)	1040-1 $\frac{3}{8}$	444 (500-1 $\frac{3}{8}$)
C CIRCLING	1060-1 451 (500-1)	1080-1 471 (500-1)	1280-2 671 (700-2)	1480-2 $\frac{3}{4}$ 871 (900-2 $\frac{3}{4}$)

HIRL Rwy 10-28 **0**
MIRL Rwy 1-19 **0**
REIL Rwy 1 and 28 **0**

EC-1, 14 MAY 2026 to 11 JUN 2026

EC-1, 14 MAY 2026 to 11 JUN 2026