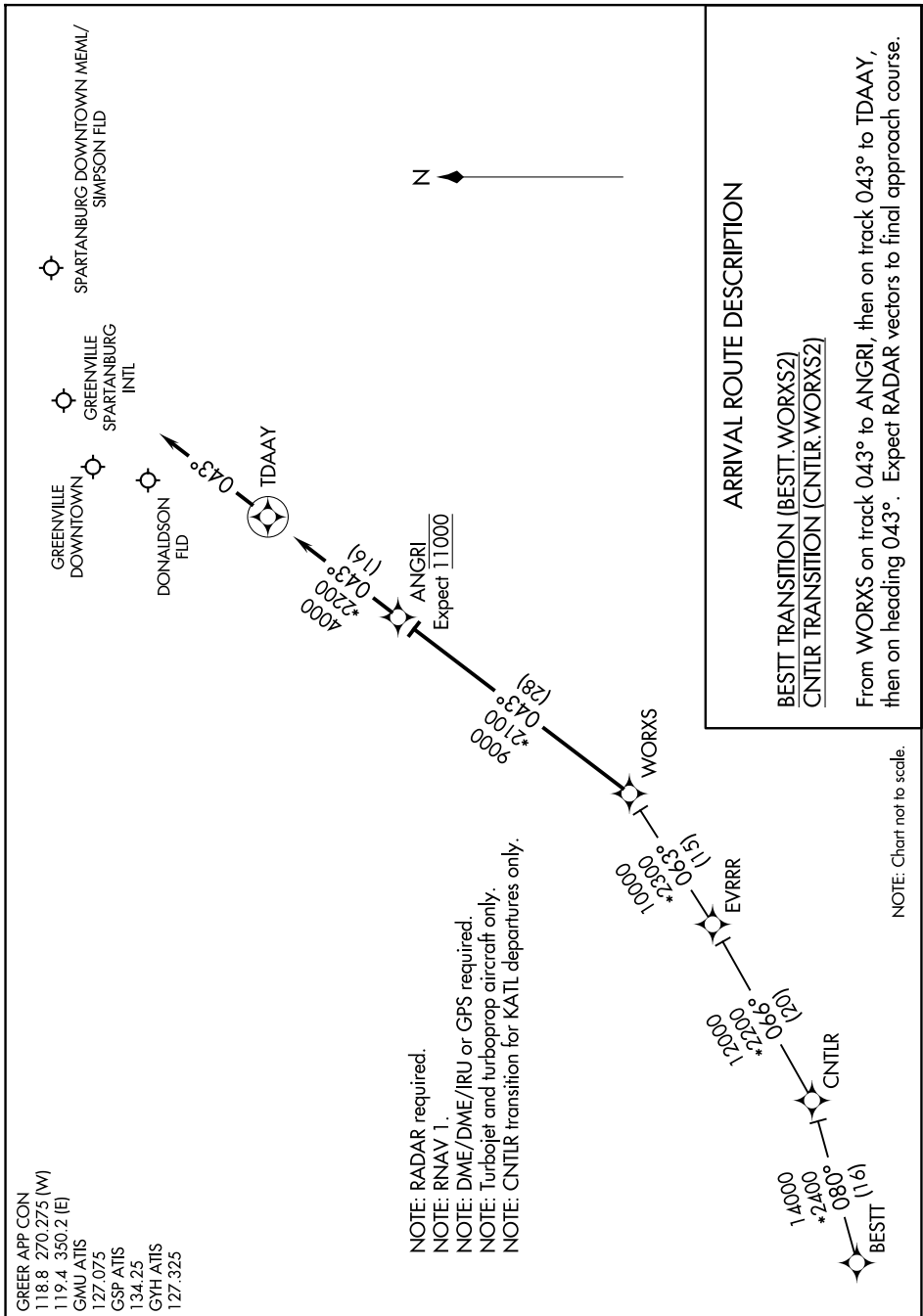


WORXS TWO ARRIVAL(RNAV)

GREER, SOUTH CAROLINA

SE-2, 14 MAY 2026 to 11 JUN 2026



GREER APP CON
 118.8 270.275 (W)
 119.4 350.2 (E)
 GMU ATIS
 127.075
 GSP ATIS
 134.25
 GYH ATIS
 127.325

- NOTE: RADAR required.
- NOTE: RNAV 1.
- NOTE: DME/DME/IRU or GPS required.
- NOTE: Turbojet and turboprop aircraft only.
- NOTE: CNTLRL transition for KATL departures only.

NOTE: Chart not to scale.

SE-2, 14 MAY 2026 to 11 JUN 2026

WORXS TWO ARRIVAL(RNAV)

GREER, SOUTH CAROLINA