




LOC HBE <b>110.9</b>	APP CRS <b>236°</b>	Rwy Ldg TDZE Apt Elev	<b>7372</b> <b>1145</b> <b>1199</b>
-------------------------	------------------------	-----------------------------	---

# ILS or LOC RWY 24

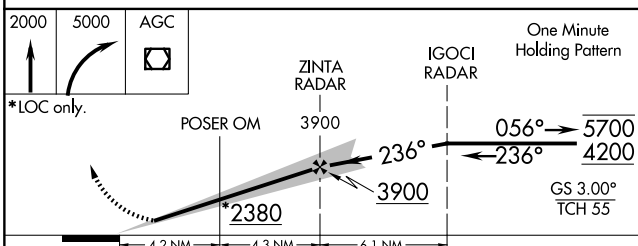
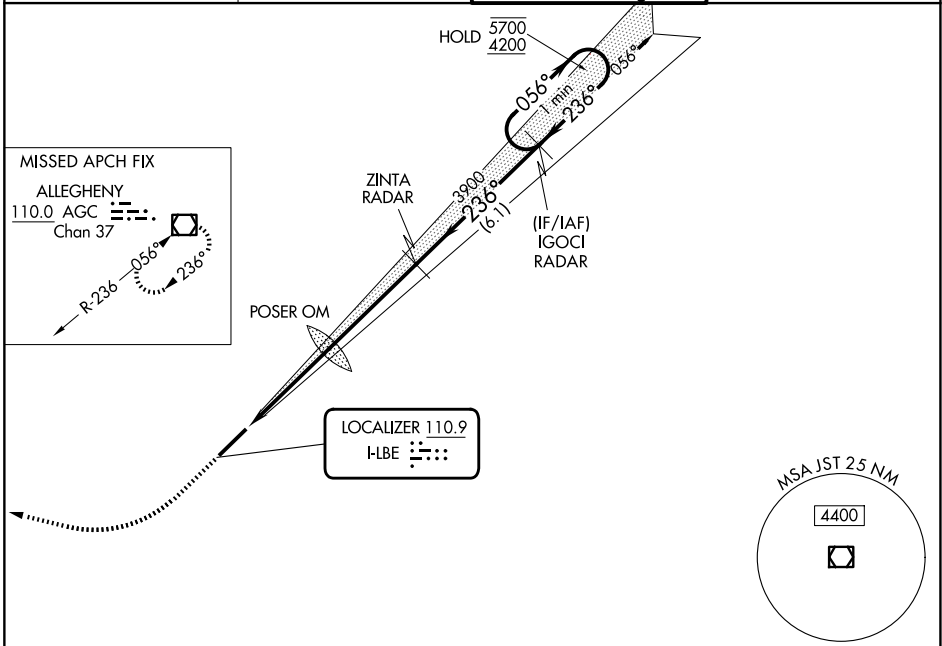
ARNOLD PALMER RGNL (LBE)




RNAV 1-GPS or RADAR required for procedure entry.  
From IGOCI: RNAV 1-GPS required.  
RADAR required.

MALSR  MISSED APPROACH: Climb to 2000 then climbing right turn to 5000 direct AGC VOR/DME and hold.

 Circling NA SE of Rwy 6-24. Inop table does not apply to S-LOC 24 Cats C/D.  
 For inop ALS, increase POSER OM minimums S-LOC 24 Cats C/D visibility to 1 3/4 SM.

ATIS <b>118.375</b>	JOHNSTOWN APP CON * <b>121.2 299.2</b>	PALMER TOWER * <b>125.0 (CTAF)</b>	GND CON <b>121.8</b>
------------------------	---	---------------------------------------	-------------------------



ELEV 1199	 TDZE 1145
REIL Rwy 6  HIRL Rwy 6-24 	
FAF to MAP 8.5 NM	
Knots	60 90 120 150 180
Min:Sec	8:30 5:40 4:15 3:24 2:50

CATEGORY	A	B	C	D
S-ILS 24	1345-1/2 200 (200-1/2)			
S-LOC 24	2380-3/4 1235 (1200-3/4)	2380-1 1235 (1200-1)	2380-3	1235 (1200-3)
CIRCLING	2380-1 1/4 1181 (1200-1 1/4)	2380-1 1/2 1181 (1200-1 1/2)	2380-3	1181 (1200-3)
POSER OM MINIMUMS				
S-LOC 24	1760-1/2 615 (600-1/2)	1760-1 3/8 615 (600-1 3/8)		
CIRCLING	1760-1 561 (600-1)	1780-1 581 (600-1)	2060-2 1/2 861 (900-2 1/2)	2060-2 3/4 861 (900-2 3/4)

NE-4, 14 MAY 2026 to 11 JUN 2026

NE-4, 14 MAY 2026 to 11 JUN 2026