

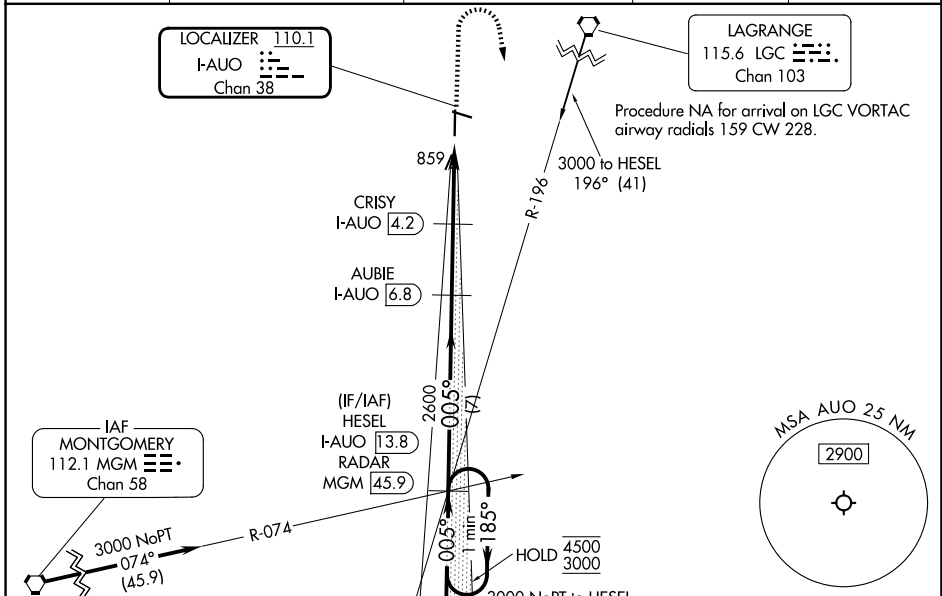
LOC/DME I-AUO 110.1 Chan 38	APP CRS 005°	Rwy Ldg TDZE Apt Elev	5264 759 777
---	------------------------	-----------------------------	---

ILS or LOC RWY 36

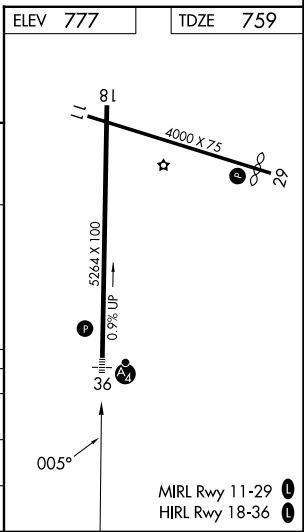
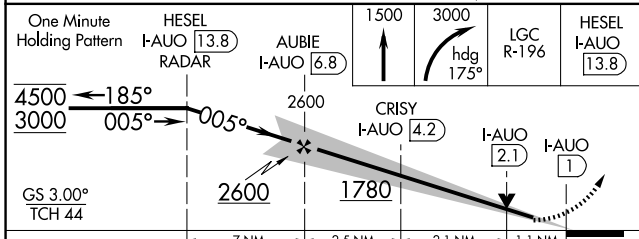
AUBURN UNIVERSITY RGNL (AUO)

DME required.	<p>⚠ Circling Rwy 29 NA at night. VDP NA when using CSG altimeter setting. When local altimeter setting not received, use CSG altimeter setting and increase S-ILS 36 DA to 1073 feet; increase all MDAs 120 feet and S-LOC 36 visibility Cats C/D ¾ SM, and Circling visibility Cats C/D ½ SM. Inop table does not apply to S-ILS 36 all Cats. For inop ALS when using CSG altimeter setting, increase S-ILS 36 all Cats visibility to ¾ SM.</p>	<p>MALSF</p>	<p>MISSED APPROACH: Climb to 1500 then climbing right turn to 3000 on heading 175° and on LGC VORTAC R-196 to HESEL/I-AUO 13.8 DME/RADAR and hold.</p>
---------------	--	--------------	--

AWOS-3PT 132.575	ATLANTA APP CON * 125.5 323.1	AUBURN TOWER * 123.875 (CTAF) 0	GND CON * 121.625	UNICOM 123.0
----------------------------	---	--	-----------------------------	------------------------



ELEV 777	TDZE 759
----------	----------



CATEGORY	A	B	C	D
S-ILS 36		959-¾	200 (200-¾)	
S-LOC 36		1120-¾	361 (400-¾)	
CIRCLING	1280-1 503 (600-1)	1360-1 583 (600-1)	1380-1¾ 603 (700-1¾)	1440-2 663 (700-2)

SE-4, 14 MAY 2026 to 11 JUN 2026

SE-4, 14 MAY 2026 to 11 JUN 2026