

WAAS CH 63139 W11A	APP CRS 111°	Rwy Ldg TDZE Apt Elev	4000 775 777
----------------------------------------	------------------------	-----------------------------	-----------------------------------------

RNAV (GPS) RWY 11

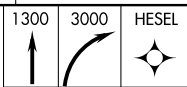
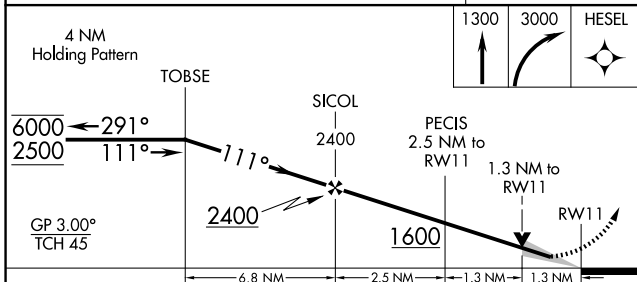
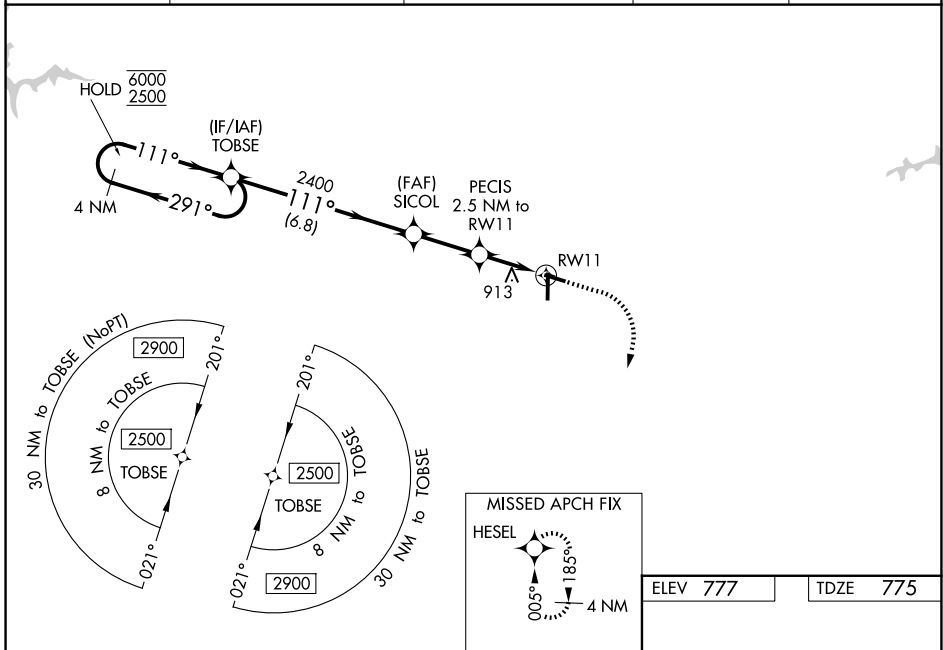
AUBURN UNIVERSITY RGNL (AUO)

RNP APCH - GPS.

⚠ Baro-VNAV and VDP NA when using CSG altimeter setting. For uncompensated Baro-VNAV systems, LNAV/VNAV NA below -16°C or above 54°C. Circling Rwy 29 NA at night. When local altimeter setting not received, use CSG altimeter setting: increase LPV DA to 1139 feet; increase LNAV/VNAV DA to 1334 feet and all visibilities ¼ SM. Increase all MDAs 120 feet and LNAV visibility Cats C/D ¼ SM and Circling Cat C/D visibility ½ SM.

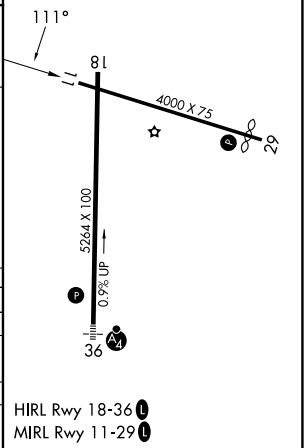
MISSED APPROACH:
Climb to 3000 then climbing right turn to 3000 direct HESEL and hold.

AWOS-3PT 132.575	ATLANTA APP CON ★ 125.5 323.1	AUBURN TOWER ★ 123.875 (CTAF) 0	GND CON ★ 121.625	UNICOM 123.0
----------------------------	-----------------------------------------	-------------------------------------------	-----------------------------	------------------------



ELEV 777	TDZE 775
----------	----------

4 NM Holding Pattern	TOBSE	SICOL	PECIS	RW11
6000 ← 291°	← 111° →	2400	2.5 NM to RW11	1.3 NM to RW11
GP 3.00° TCH 45	2400	1600		
	6.8 NM	2.5 NM	1.3 NM	1.3 NM
CATEGORY	A	B	C	D
LPV DA	1025-1 250 (300-1)			
LNAV/VNAV DA	1220-1 3/4 445 (500-1 3/4)			
LNAV MDA	1220-1 445 (500-1) 1220-1 3/4 445 (500-1 3/4)			
CIRCLING	1280-1 503 (600-1)	1360-1 583 (600-1)	1380-1 3/4 603 (700-1 3/4)	1440-2 663 (800-2)



HIRL Rwy 18-36 **0**
MIRL Rwy 11-29 **0**

SE-4, 14 MAY 2026 to 11 JUN 2026

SE-4, 14 MAY 2026 to 11 JUN 2026