

WAAS CH <b>58304</b> <b>W36A</b>	APP CRS <b>005°</b>	Rwy Ldg TDZE Apt Elev	<b>5264</b> <b>759</b> <b>777</b>
--	------------------------	-----------------------------	---

# RNAV (GPS) RWY 36

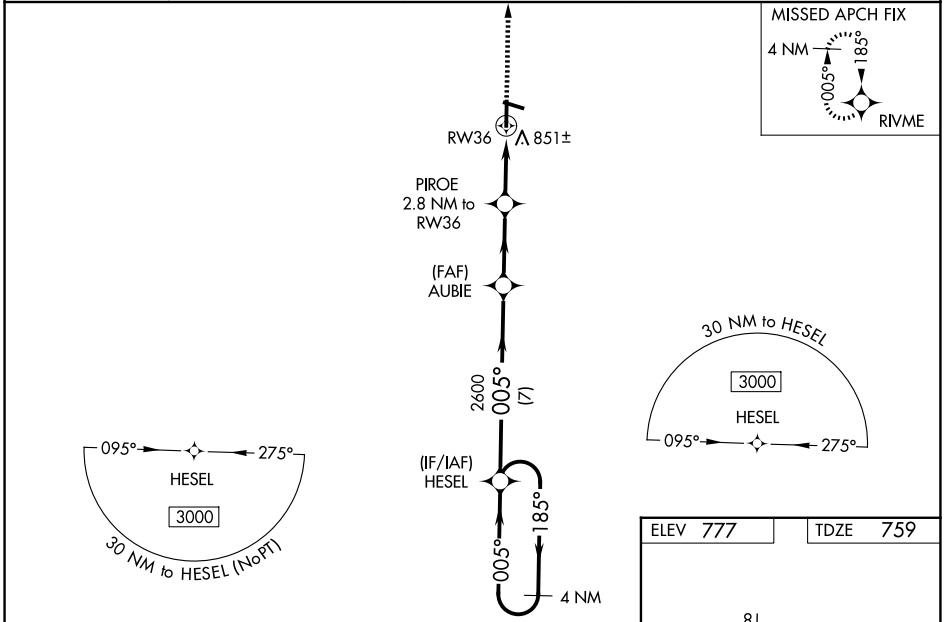
AUBURN UNIVERSITY RGNL (AUO)

**⚠** For uncompensated Baro-VNAV systems, LNAV/VNAV NA below -16°C (4°F) or above 54°C (130°F). Baro-VNAV and VDP NA when using Columbus altimeter setting.  
**⚠** DME/DME RNP-0.3 NA. When local altimeter setting not received, use Columbus altimeter setting: increase LPV DA to 1072 feet and visibility all Cats 1/8 SM; increase LNAV/VNAV DA to 1173 feet and visibility all Cats 3/8 SM; increase all MDA 120 feet and LNAV Cats C/D visibility 1/4 SM and Circling Cats C/D visibility 1/2 SM. For inop ALS, increase LNAV/VNAV Cat D visibility 1/4 SM and LNAV Cat D visibility 1/8 SM. For inop ALS, when using Columbus altimeter setting, increase LPV all Cats visibility to 1 1/8 SM, LNAV/VNAV all Cats visibility to 1 1/2 SM, and LNAV all Cats visibility to 1 3/8 SM.

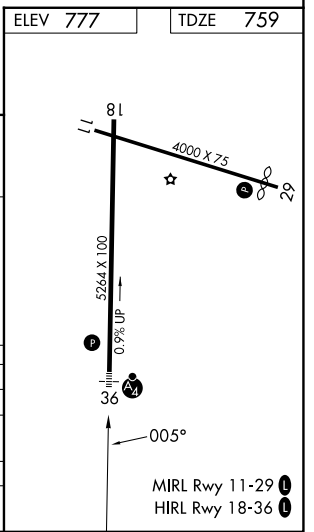
**MALSF**

**MISSED APPROACH:**  
Climb to 3000 direct RIVME and hold.

AWOS-3PT <b>132.575</b>	ATLANTA APP CON ★ <b>125.5 323.1</b>	AUBURN TOWER ★ <b>123.875</b> (CTAF) <b>0</b>	GND CON ★ <b>121.625</b>	UNICOM <b>123.0</b>
----------------------------	---	--	-----------------------------	------------------------



4 NM Holding Pattern		HESEL	AUBIE	PIROE	RW36
3000 ← 185°		005° →	2600	2.8 NM to RW36	
GP 3.00° TCH 44			*1660	*1.1 NM to RW36	
		7 NM	2.9 NM	1.7 NM	1.1 NM
CATEGORY	A	B	C	D	
LPV DA		959-3/4	200 (200-3/4)		
LNAV/VNAV DA		1060-7/8	301 (300-7/8)		
LNAV MDA	1120-3/4	361 (400-3/4)	1120-7/8	361 (400-7/8)	
CIRCLING	1280-1 503 (600-1)	1360-1 583 (600-1)	1380-1 3/4 603 (700-1 3/4)	1480-2 1/4 703 (800-2 1/4)	



SE-4, 14 MAY 2026 to 11 JUN 2026

SE-4, 14 MAY 2026 to 11 JUN 2026