

WAAS CH 63100 W23A	APP CRS 227°	Rwy Idg TDZE 333 Apt Elev 333
--	------------------------	---

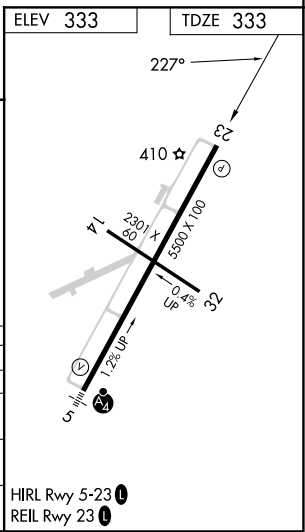
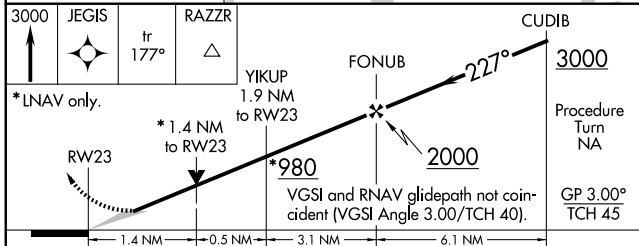
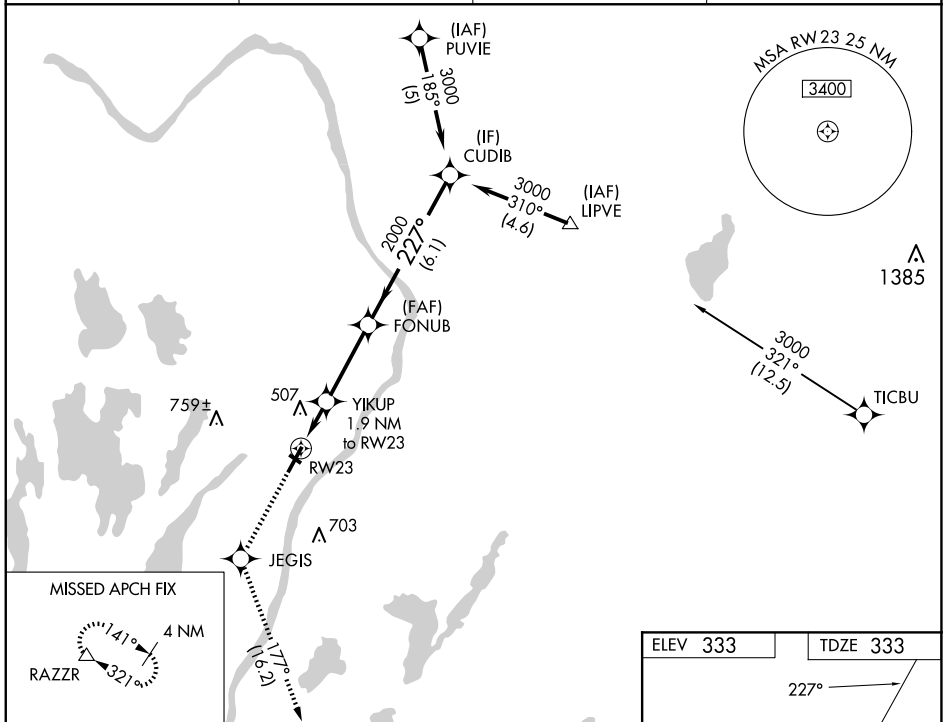
RNAV (GPS) RWY 23

WATERVILLE RGNL (WVL)

⚠ Circling to Rwy 14 and 32 NA at night. DME/DME RNP-0.3 NA. When local altimeter setting not received, use Augusta altimeter setting; increase LPV DA to 618 feet and all visibilities ¼ SM; increase all MDAs 40 feet and increase LNAV Cat C and Circling Cat D visibility ¼ SM. VDP NA when using Augusta altimeter setting.

MISSED APPROACH: Climb to 3000 direct JEGIS and via 177° track to RAZZR and hold.

AWOS-3PT 118.375	PORTLAND APP CON ★ 128.35 299.2	CLNC DEL 124.6 299.2	UNICOM 122.7 (CTAF) 📶
----------------------------	---	--------------------------------	--



CATEGORY	A	B	C	D
LPV DA	583-¾ 250 (300-¾)			
LNAV/VNAV DA	NA			
LNAV MDA	800-1 467 (500-1)	800-1¼ 467 (500-1¼)	800-1½ 467 (500-1½)	
CIRCLING	860-1 527 (600-1)	1100-2¼ 767 (800-2¼)	1120-2½ 787 (800-2½)	

NE-1, 14 MAY 2026 to 11 JUN 2026

NE-1, 14 MAY 2026 to 11 JUN 2026