

WAAS CH 70418 W05A	APP CRS 047°	Rwy ldg 5500 TDZE 309 Apt Elev 333
--	------------------------	---

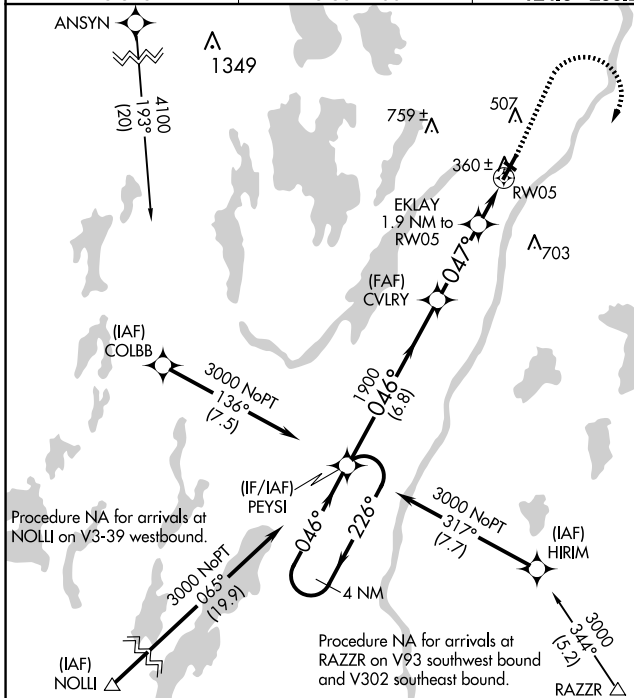
RNAV (GPS) RWY 5

WATERVILLE RGNL (WV L)

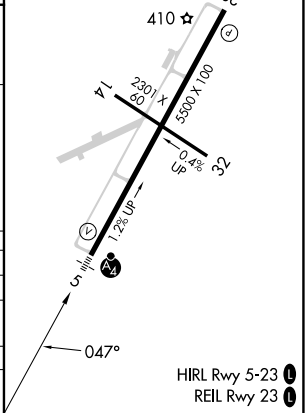
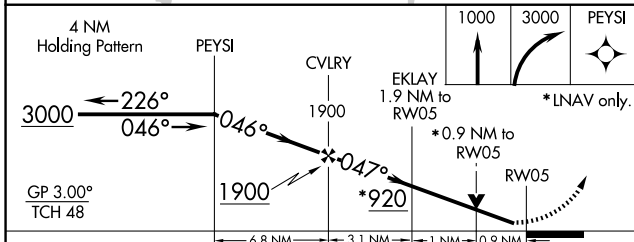
⚠ Inop table does not apply to LPV. For uncompensated Baro-VNAV systems, LNAV/VNAV NA below -15°C (5°F) or above 54°C (130°F). DME/DME RNP-0.3 NA. Helicopter visibility reduction below ¾ SM NA. Baro-VNAV and VDP NA when using Augusta altimeter setting. When local altimeter setting not received, use Augusta altimeter setting; increase LPV DA to 544 feet, LNAV/VNAV DA to 623 feet and all visibilities ¾ SM; increase all MDAs 40 feet and Circling Cat C visibility ¼ SM. Night Landing: Rwy 14 NA. For inop MALSF, increase LNAV/VNAV Cat D visibility to 1 mile and LNAV Cats C/D visibility to ¾ mile. For inop MALSF, when using Augusta altimeter setting, increase LPV all Cats visibility to ¾ mile, LNAV/VNAV Cat D visibility to 1 ½ mile, and LNAV Cat D visibility to 1 mile.

MALSF MISSED APPROACH: Climb to 1000 then climbing right turn to 3000 direct PEYSI and hold.

AWOS-3PT 118.375	PORTLAND APP CON ★ 128.35 299.2	CLNC DEL 124.6 299.2	UNICOM 122.7 (CTAF) 0
----------------------------	---	--------------------------------	---------------------------------



ELEV 333	TDZE 309
----------	----------



CATEGORY	A	B	C	D
LPV DA		509-¾	200 (200-¾)	
LNAV/VNAV DA		588-¾	279 (300-¾)	
LNAV MDA		620-¾	311 (300-¾)	
CIRCLING	860-1	527 (600-1)	1100-2¼ 767 (800-2¼)	1120-2½ 787 (800-2½)

NE-1, 14 MAY 2026 to 11 JUN 2026

NE-1, 14 MAY 2026 to 11 JUN 2026