

LOC I-JAN 110.5	APP CRS 159°	Rwy Ldg TDZE Apt Elev	8500 312 346
---------------------------	------------------------	-----------------------------	---

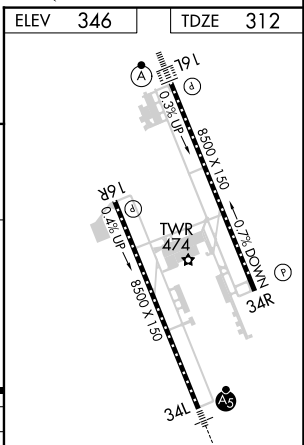
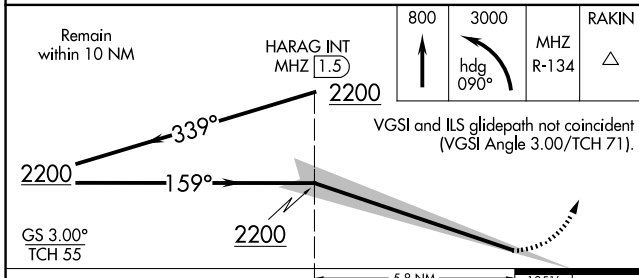
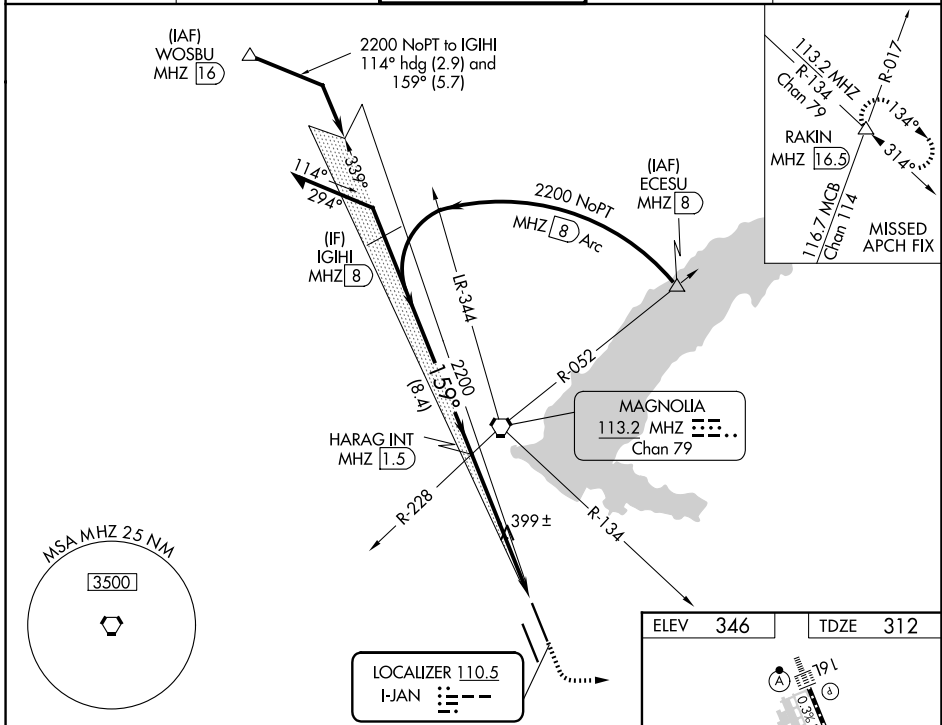
ILS RWY 16L (SA CAT I)
JACKSON-MEDGAR WILEY EVERS INTL (JAN)

ASR When control tower closed, procedure NA.
When local altimeter setting not received, procedure NA.
Requires specific OPSPEC, MSPEC, or LOA approval and use of HUD to DA.

ALSF-2

MISSED APPROACH: Climb to 800 then climbing left turn to 3000 on heading 090° and on MHz VORTAC R-134 to RAKIN INT/16.5 DME and hold, continue climb-in-hold to 3000.

ATIS 121.05	JACKSON APP CON * 123.9 317.7	JACKSON TOWER * 120.9 (CTAF) 352.0	GND CON 121.7 348.6	UNICOM 122.95
-----------------------	---	--	-------------------------------	-------------------------



CATEGORY	A	B	C	D
S-ILS 16L		RA 169/14 150 DA 462		

SA CATEGORY I ILS - SPECIAL AIRCREW & AIRCRAFT CERTIFICATION REQUIRED

TDZL/RCLS Rws 16L and 34L
REIL Rws 16R and 34R
HIRL Rws 16L-34R and 16R-34L

SC-4, 14 MAY 2026 to 11 JUN 2026

SC-4, 14 MAY 2026 to 11 JUN 2026