

ILS or LOC RWY 16L

JACKSON-MEDGAR WILEY EVERS INTL (JAN)

LOC I-JAN 110.5	APP CRS 159°	Rwy Ldg 8500
		TDZE 312
		Apt Elev 346

DME or RADAR required for Cat E.

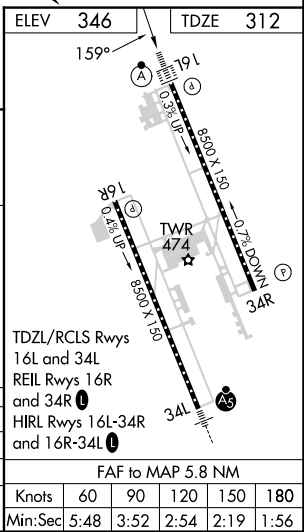
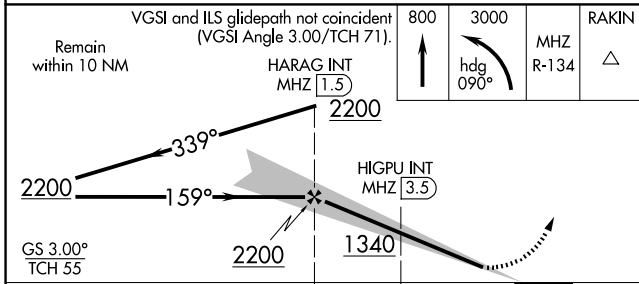
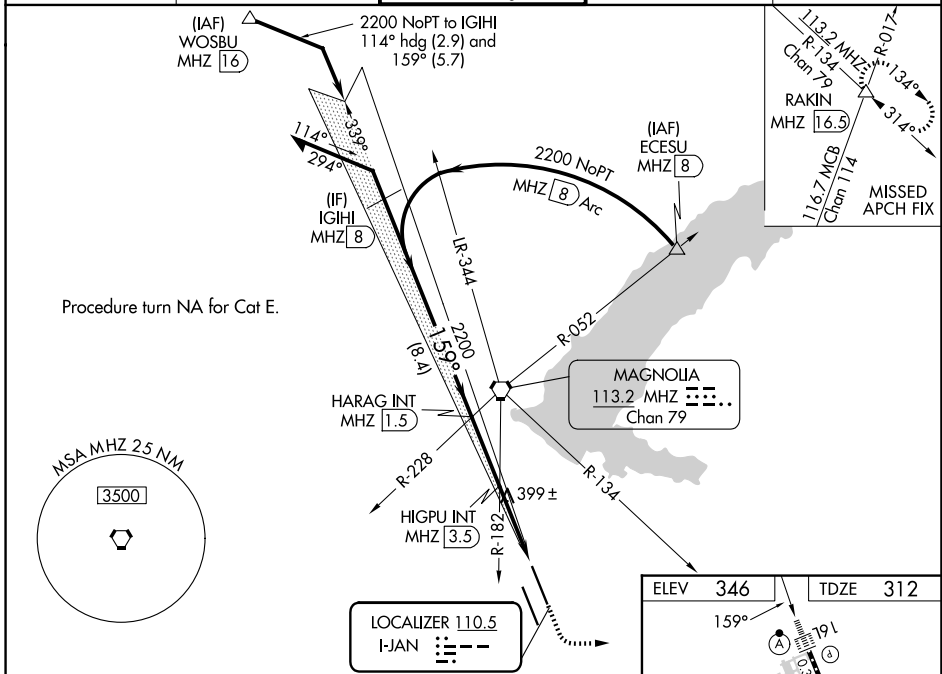
⚠ Circling NA for Cat E southwest of Rwy 16R-34L. When local altimeter setting not received, use HKS altimeter setting and increase S-ILS 16L DA to 531 feet; increase all MDAs 20 feet and S-LOC 16L visibility Cat C/D/E to RVR 3500.

ASR For inop ALS, increase S-ILS 16L Cat E visibility to RVR 4000 and increase S-LOC 16L Cats C/D/E visibility to RVR 5500. For inop ALS when using HKS Field altimeter setting, increase S-ILS 16L Cat E visibility to RVR 4000 and increase S-LOC 16L Cats C/D/E visibility to RVR 5500.

ALS-2 **(A)**

MISSED APPROACH: Climb to 800 then climbing left turn to 3000 on heading 090° and on MHz VORTAC R-134 to RAKIN INT/16.5 DME and hold, continue climb-in-hold to 3000.

ATIS 121.05	JACKSON APP CON* 123.9 317.7	JACKSON TOWER* 120.9 (CTAF) 352.0	GND CON 121.7 348.6	UNICOM 122.95
-----------------------	--	---	-------------------------------	-------------------------



CATEGORY	A	B	C	D	E
S-ILS 16L	512/18 200 (200-½)				
S-LOC 16L	660/24	348 (400-½)	660/30 348 (400-¾)		
CIRCLING	880-1 534 (600-1)	900-1 554 (600-1)	900-1½ 554 (600-1½)	960-2 614 (700-2)	1040-2½ 694 (700-2½)

SC-4, 14 MAY 2026 to 11 JUN 2026

SC-4, 14 MAY 2026 to 11 JUN 2026