

# ILS or LOC RWY 34L

JACKSON-MEDGAR WILEY EVERS INTL (JAN)

LOC I-FRL <b>109.3</b>	APP CRS <b>339°</b>	Rwy Ldg <b>8500</b>
		TDZE <b>329</b>
		Apt Elev <b>346</b>

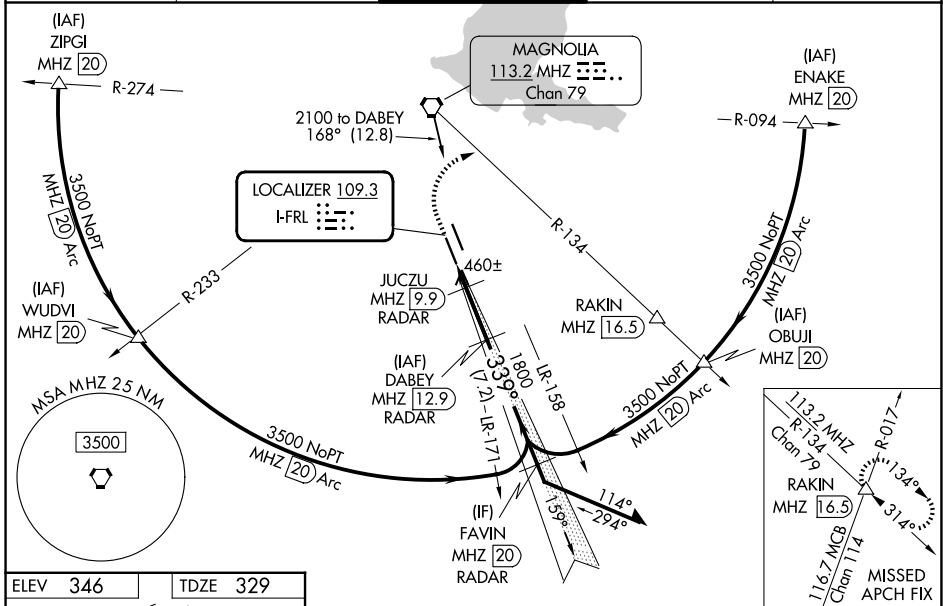
DME or RADAR required.

▼ Circling NA for Cat E southwest of Rwy 16R-34L. Rwy 34L helicopter visibility reduction below RVR 4000 NA. When local altimeter setting not received, use HKS altimeter setting and increase all S-ILS 34L DA to 548 feet increase MDAs 20 feet. For inop ALS, increase S-ILS 34L ASR Cat E visibility to RVR 4000, increase S-LOC 34L Cat A/B visibility to RVR 5500 and Cat C/D/E to 1½ SM. Procedure turn NA for Cat E.  
 \* 860 when using HKS altimeter setting.  
 # DME from MHZ VORTAC.

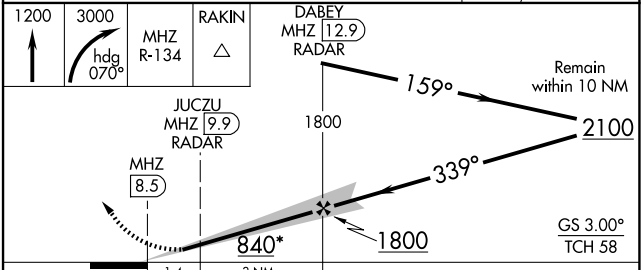
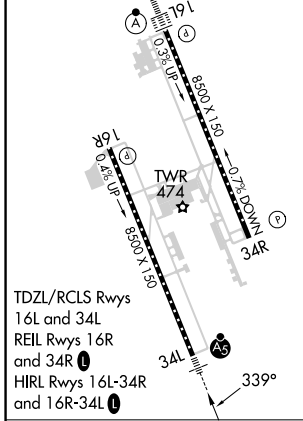
**MALSRL**

**MISSED APPROACH:**  
 Climb to 1200 then climbing right turn to 3000 on heading 070° and MHZ VORTAC R-134 to RAKIN INT/ MHZ 16.5 DME and hold, continue climb-in-hold to 3000.

ATIS <b>121.05</b>	JACKSON APP CON* <b>123.9 317.7</b>	JACKSON TOWER* <b>120.9 (CTAF) 0 352.0</b>	GND CON <b>121.7 348.6</b>	UNICOM <b>122.95</b>
-----------------------	--	---	-------------------------------	-------------------------



ELEV <b>346</b>	TDZE <b>329</b>
-----------------	-----------------



CATEGORY	A	B	C	D	E
S-ILS 34L	529/18 200 (200-½)				
S-LOC 34L*	840/40	511 (500-¾)	840/55	511 (500-1)	
CIRCLING	880-1	900-1	900-1½	960-2	1040-2½
	534 (600-1)	554 (600-1)	554 (600-1½)	614 (700-2)	694 (700-2½)
JUCZU DME MINIMUMS #					
S-LOC 34L	760/40 431 (500-¾)				
CIRCLING	880-1	900-1	900-1½	960-2	1040-2½
	534 (600-1)	554 (600-1)	554 (600-1½)	614 (700-2)	694 (700-2½)

FAF to MAP 4.4 NM					
Knots	60	90	120	150	180
Min:Sec	4:24	2:56	2:12	1:46	1:28

SC-4, 14 MAY 2026 to 11 JUN 2026

SC-4, 14 MAY 2026 to 11 JUN 2026