

WAAS CH 49211 W16B	APP CRS 159°	Rwy Ldg 8500 TDZE 320 Apt Elev 346
--	------------------------	---

RNAV (GPS) RWY 16R

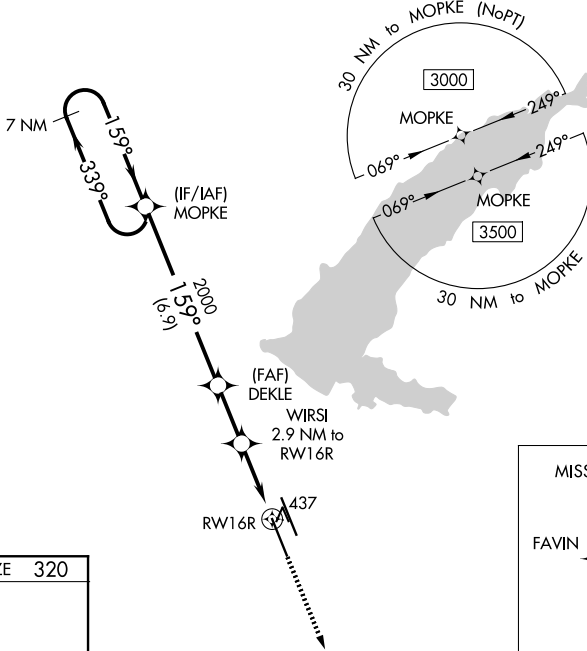
JACKSON-MEDGAR WILEY EVERS INTL (JAN)

RNP APCH.

▽ For uncompensated Baro-VNAV systems, LNAV/VNAV NA below -7°C or above 54°C. Circling NA for Cat E southwest of Rwy 16R-34L. When local altimeter setting not received, use Hawkins Fld altimeter setting and increase all DA 19 feet and all MDA 20 feet, increase LNAV/VNAV all Cats and LNAV Cat C/D/E visibility 1/8 SM. Rwy 16R helicopter visibility reduction below 3/4 SM NA. VDP and Baro-VNAV NA when using Hawkins Fld altimeter setting.

MISSED APPROACH:
Climb to 3000 direct FAVIN and hold.

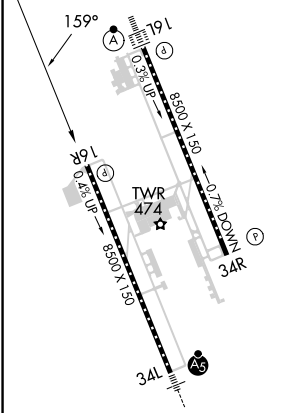
ATIS 121.05	JACKSON APP CON* 123.9 317.7	JACKSON TOWER* 120.9 (CTAF) 352.0	GND CON 121.7 348.6	UNICOM 122.95
-----------------------	--	---	-------------------------------	-------------------------



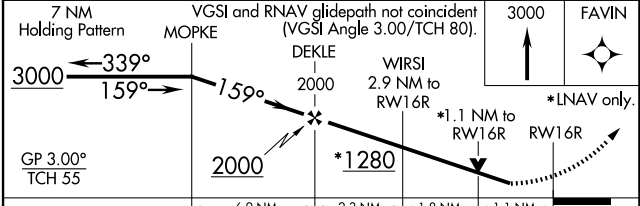
SC-4, 14 MAY 2026 to 11 JUN 2026

SC-4, 14 MAY 2026 to 11 JUN 2026

ELEV 346	TDZE 320
-----------------	-----------------



TDZL/RCLS Rwsy 16L and 34L
REIL Rwsy 16R and 34R
HIRL Rwsy 16L-34R and 16R-34L



CATEGORY	A	B	C	D	E
LPV DA		621-1	301 (300-1)		
LNAV/VNAV DA		638-1	318 (300-1)		
LNAV MDA	720-1	400 (400-1)	720-1 1/8	400 (400-1 1/8)	
CIRCLING	880-1 534 (600-1)	900-1 554 (600-1)	900-1 1/2 554 (600-1 1/2)	960-2 614 (700-2)	1040-2 1/2 694 (700-2 1/2)